

HOME  TRUTHS



Lord Street, Ecclestone

PR7 5TR

  
£180,000



Fabulous end terrace property with two double bedrooms, allocated parking, courtyard garden and offering c760 square feet of stylish accommodation. Within easy reach of all village amenities, schools and countryside walks this is an excellent first time buy.

Step into the sumptuous living room with double doors opening to the spacious dining kitchen comprising a range of wall and base units with electric oven and grill, Baxi combi boiler with 10 year guarantee, and space, power and plumbing for additional appliances.

Step outside into the lovely courtyard garden with upper and lower terraces and raised beds planted for pollinators. This private space is the perfect place in which to relax and entertain.

Back inside, stairs lead to the first floor landing with both bedrooms having built in storage and the elegant bathroom comprising tiled elevations, capacious wash hand basin on vanity and mixer shower in walk in cubicle.



Fabulous end terrace property with two double bedrooms, allocated parking, courtyard garden and offering c760 square feet of stylish accommodation. Within easy reach of all village amenities, schools and countryside walks this is an excellent first time buy.

Council Tax band: A

Tenure: Freehold

EPC Energy Efficiency Rating: D

- Delightful end terrace property
- Beautifully presented
- Two double bedrooms
- c 760 square feet
- Designated parking



HOME  TRUTHS

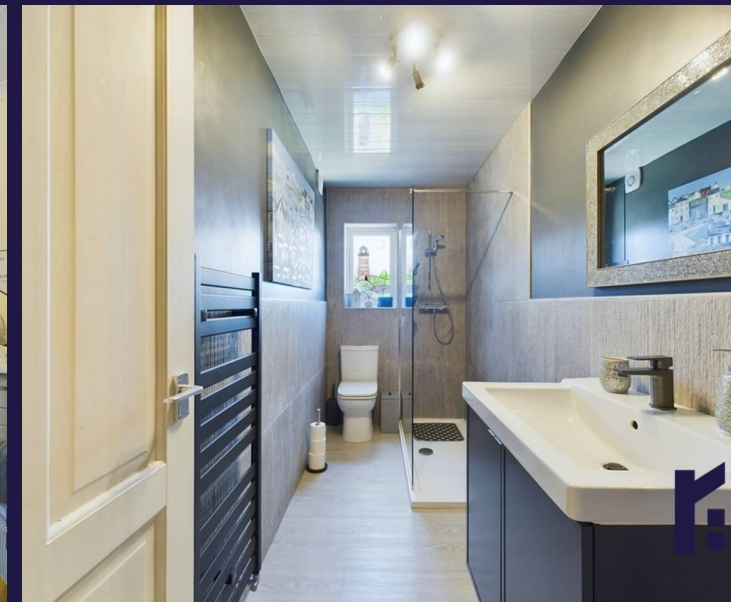
Eccleston Branch

265 The Green, Eccleston, PR7 5TF  
01257 451673

Coppull Branch

244 Spendmore Lane, Coppull, PR7 5DE  
01257 794588

[www.hometruthslancs.co.uk](http://www.hometruthslancs.co.uk)  
[office@hometruthslancs.co.uk](mailto:office@hometruthslancs.co.uk)





Floor 1



Floor 2

**Approximate total area<sup>(1)</sup>**

759.07 ft<sup>2</sup>

70.52 m<sup>2</sup>

**Reduced headroom**

9.9 ft<sup>2</sup>

0.92 m<sup>2</sup>

(1) Excluding balconies and terraces

 Reduced headroom  
(below 1.5m/4.92ft)

While every attempt has been made to ensure accuracy, all measurements are approximate, not to scale. This floor plan is for illustrative purposes only.

**GIRAFFE360**