

Cecil Crescent, Hatfield - AL10 0HG

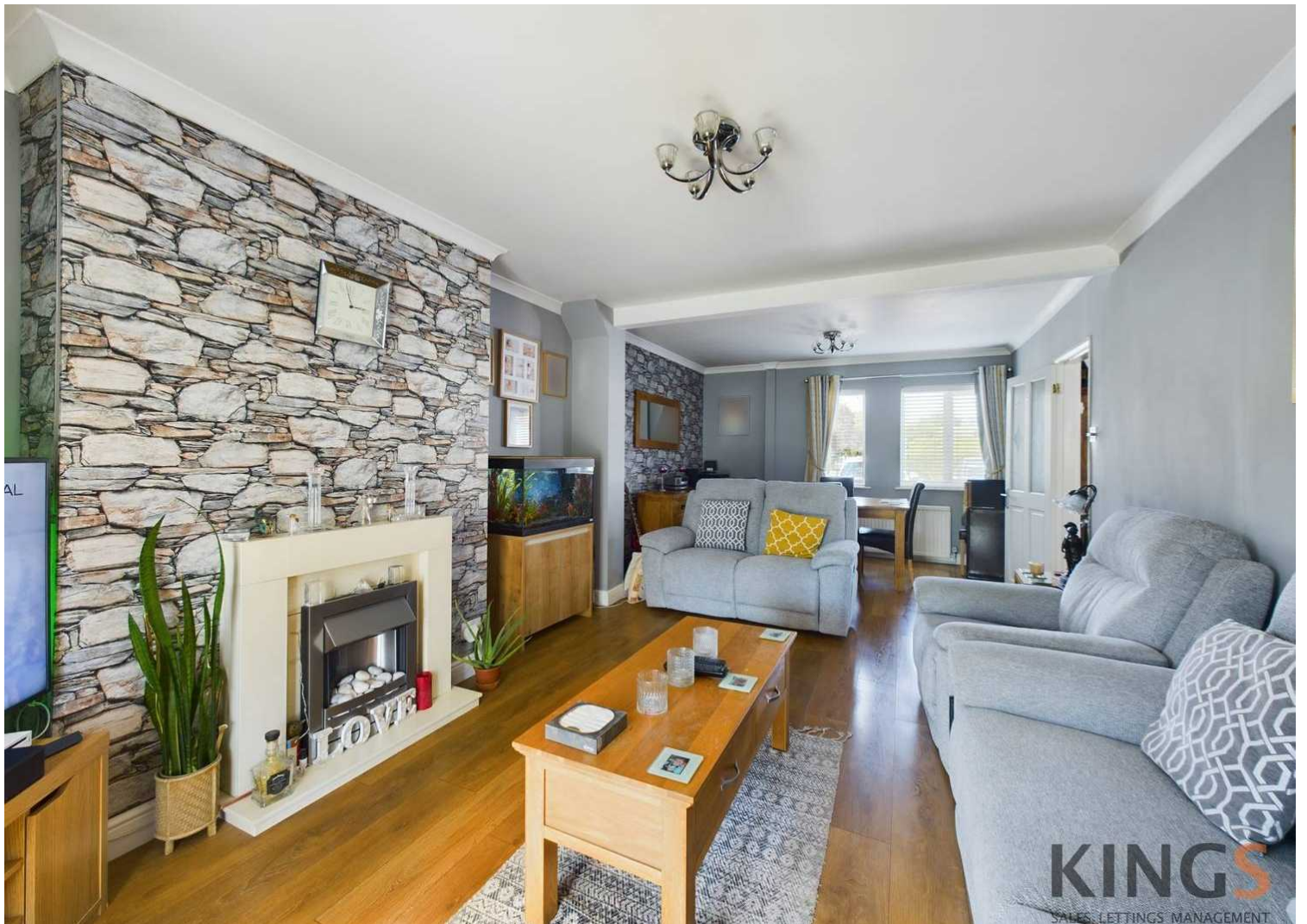
£475,000 Freehold

END TERRACE HOUSE • THREE BEDROOMS • SPACIOUS LIVING/DINING ROOM • RECENTLY FITTED KITCHEN • SUN ROOM • SOUTH WEST FACING GARDEN • DRIVEWAY FOR SEVERAL CARS • CLOSE TO TRAIN STATION • FREEHOLD •
EPC RATING - TBC

KINGS
SALES LETTINGS MANAGEMENT



KINGS
SALES LETTINGS MANAGEMENT



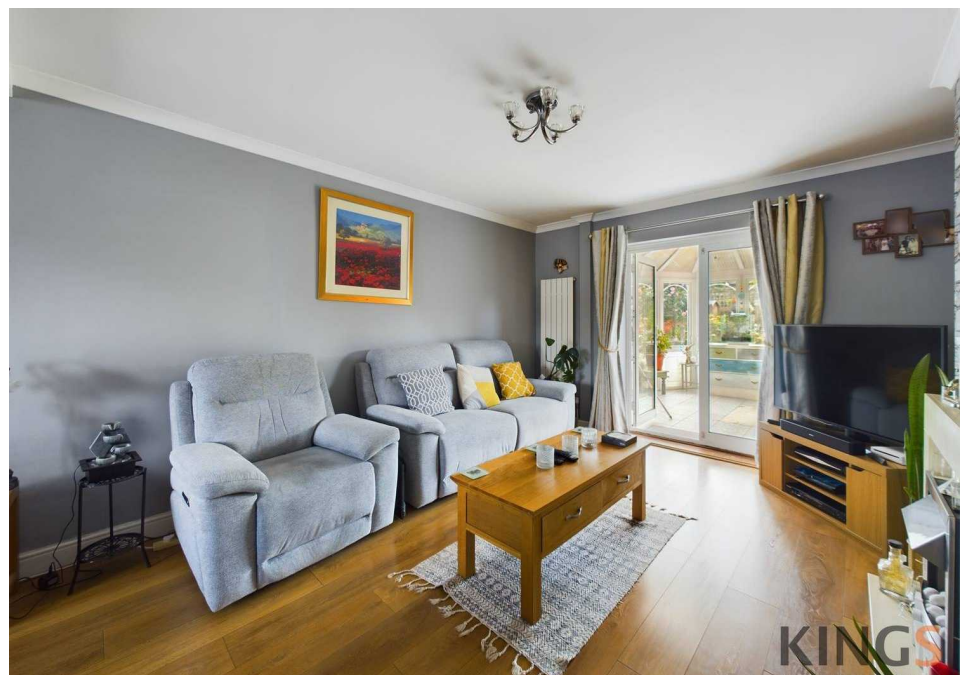
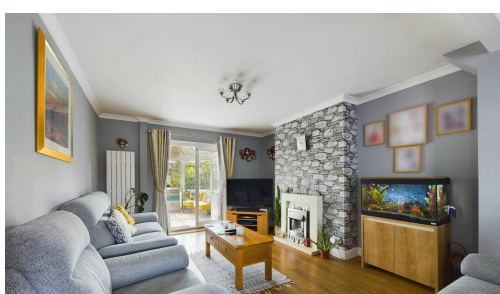
KINGS
SALES LETTINGS MANAGEMENT

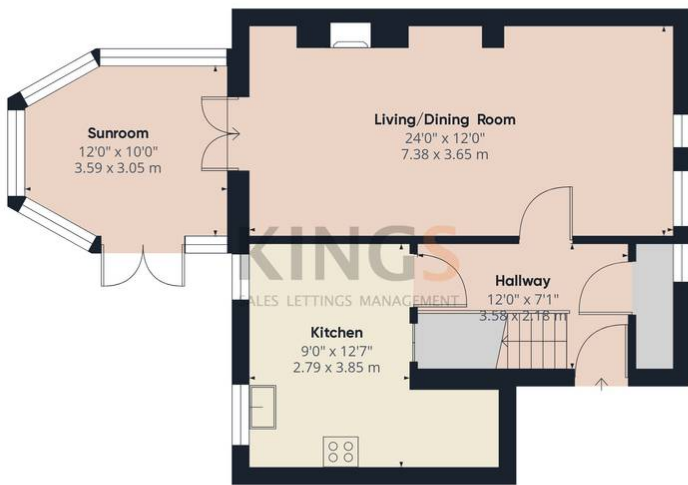
Situated within walking distance to many local amenities including the picturesque grounds of Hatfield House & Park and Hatfield train station (fast train to Kings Cross & route to Moorgate) is this well presented three bedroom end terrace house. The ground floor comprises an inviting entrance hall with storage, spacious living/dining room with fireplace, modern recently fitted kitchen with pantry and sun room. The first floor features a master bedroom, second double bedroom with fitted wardrobes, third smaller double bedroom and a modern family bathroom with P-shaped bath. This home further benefits from a stunning South West facing rear garden with lawn and seating areas ideal for entertaining, side access, and a driveway for three cars.



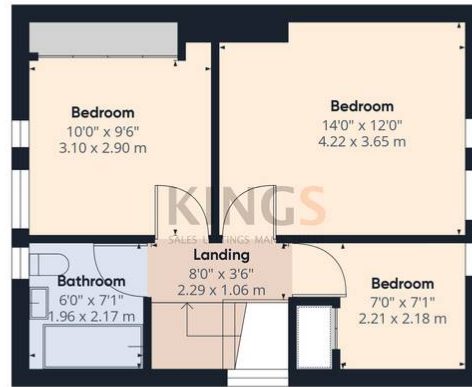
Council Tax band: C

Tenure: Freehold





Ground Floor



Floor 1

Approximate total area⁽¹⁾
1048.4 ft²
97.4 m²

(1) Excluding balconies and terraces

While every attempt has been made to ensure accuracy, all measurements are approximate, not to scale. This floor plan is for illustrative purposes only.

GIRAFFE360

