



## Victorian Apartment Building

Springfield Court, Station Road, Purton, Wiltshire, SN5 4EL

Guide Price £135,000

**mcfarlane**  
property.com

## Second Floor Apartment Purton, Wiltshire

---

- Red Brick Victorian Building Conversion
  - Two DOUBLE Bedrooms
  - Second Floor Position
  - Allocated Parking
- 

A very well presented Two Double Bedroom Second Floor Apartment in the sought after Village of Purton. Situated on the second floor of this converted red brick Victorian building Flat 5 offers generous proportions and stunning views of neighbouring countryside. A summary of accommodation briefly comprises: Secure Entrance Stair wells to Second Floor, Entrance Hallway, Walk In Storage Cupboard, Kitchen / Breakfast Room, Living Room / Diner, Two Double Bedrooms and Family Bathroom. uPVC Double Glazing and Gas Fired Central Heating. Long Lease remaining of **980years** and share of the Freehold. Service Charge of £45.00 PCM. Ideal Investment. **Potential Yield of 8+ %**

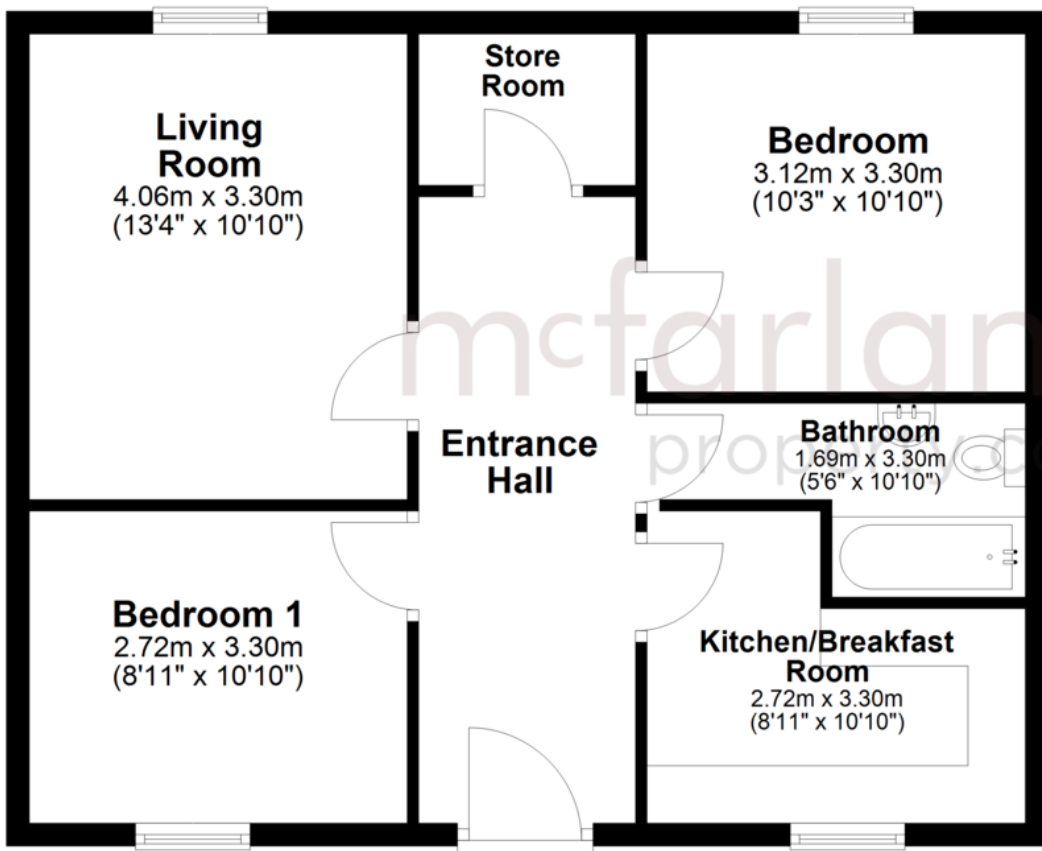
Call:

McFarlane Cricklade  
(01793) 75 10 44



## Second Floor

Approx. 59.7 sq. metres (642.8 sq. feet)



Total area: approx. 59.7 sq. metres (642.8 sq. feet)

We   
where you  
**LIVE**

Our team are friendly, experienced and are all local. They know it better than they do their own living rooms and can help you find what you're looking for because **we love where we live.**

We would be delighted to show you around this property.

**Allocated  
Parking  
Space**

**Because every home  
needs a personal touch.**

**If you would like to view this  
property then please get in touch.**

📞 01793 751044

✉ cricklade@mcfarlaneproperty.com

[mcfarlaneproperty.com](http://mcfarlaneproperty.com)

**mcfarlane**  
property.com

### **Cricklade.**

102 High Street  
Cricklade SN6 6AA

📞 01793 751044

### **Marlborough.**

106 High Street  
Marlborough SN8 1LT

📞 01672 514380

### **Old Town.**

28-30 Wood Street  
Swindon SN1 4AB

📞 01793 296880

### **Swindon.**

The Village Centre,  
Redhouse SN25 2FW

📞 01793 296600

Agents Note: Whilst every care has been taken to prepare these sales particulars, they are for guidance purposes only. All measurements are approximate and are for general guidance purposes only and whilst every care has been taken to ensure their accuracy, they should not be relied upon and potential buyers are advised to recheck the measurements