

UNIT 2 COLNE WAY COURT

COLNE WAY, WATFORD, WD24 7NE

FOREST
REAL ESTATE

INCORPORATING Smiddy & Co

TO LET

4,558 SQ FT

Modern Two Storey Mid Terrace Warehouse

Key Features

- Use Class E
- Air Conditioned First Floor Offices
- 8 Allocated Parking Spaces
- Available Now
- Conveniently Located Near Major Transport Routes Including The A41, M1 & M25
- Within A Short Walk Of Watford North Station
- Ground Floor Has Been Sub-Divided But Can Be Made Open Plan

Unit 2 Colne Way Court, Colne Way
Watford, WD24 7NE





Description

This contemporary, mid-terrace, two-story light industrial unit is part of an estate with similar properties. The first floor features primarily open-plan office space, while the ground floor is sectioned into several rooms, which can be modified or removed based on the tenant's needs.

The first floor includes a main office area and a separate office/boardroom, all equipped with a suspended ceiling, built-in LED lighting, air conditioning, Cat V data cabling, and kitchen and restroom facilities.

Additional features of the unit include an electric roller shutter door, a separate entry for personnel, and ample parking for up to eight vehicles.

Location

The property is ideally situated in North Watford on Colne Way, offering direct access to the A41 North Western Avenue.

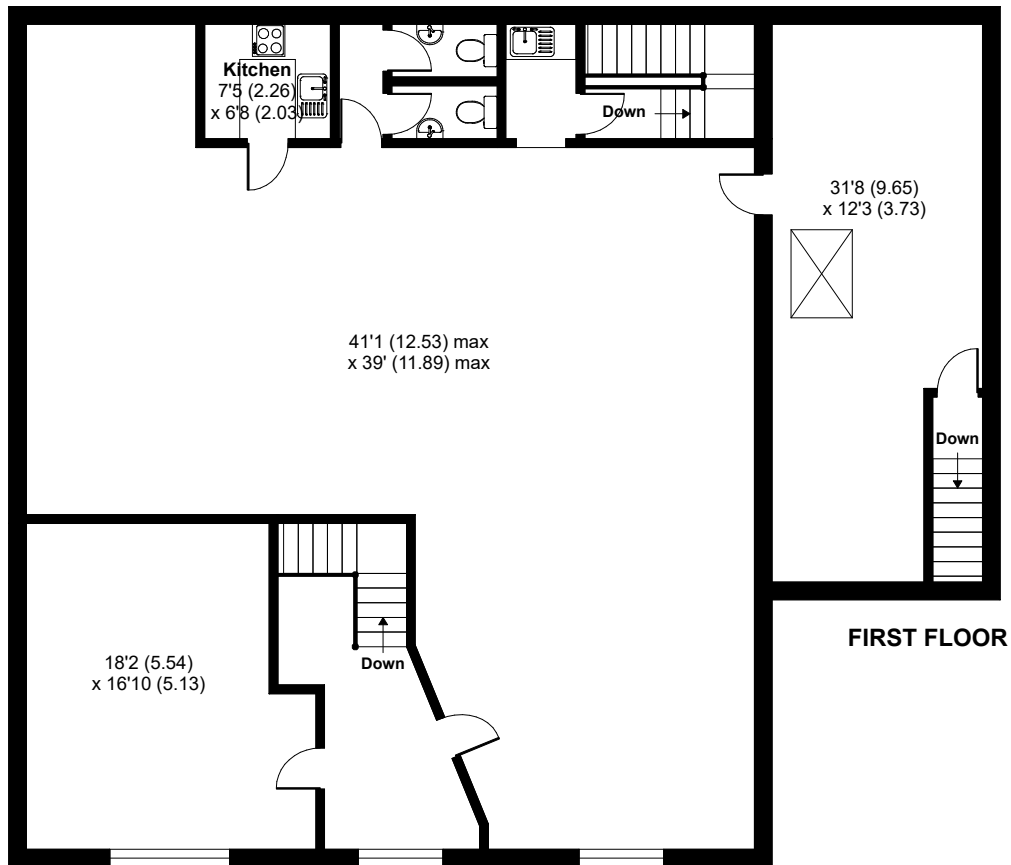
The M1 (Junction 5) is conveniently located less than a mile to the southeast, while the M25 (Junctions 20 and 21) can be reached within approximately 3 miles to the north, ensuring excellent connectivity to the national motorway network.



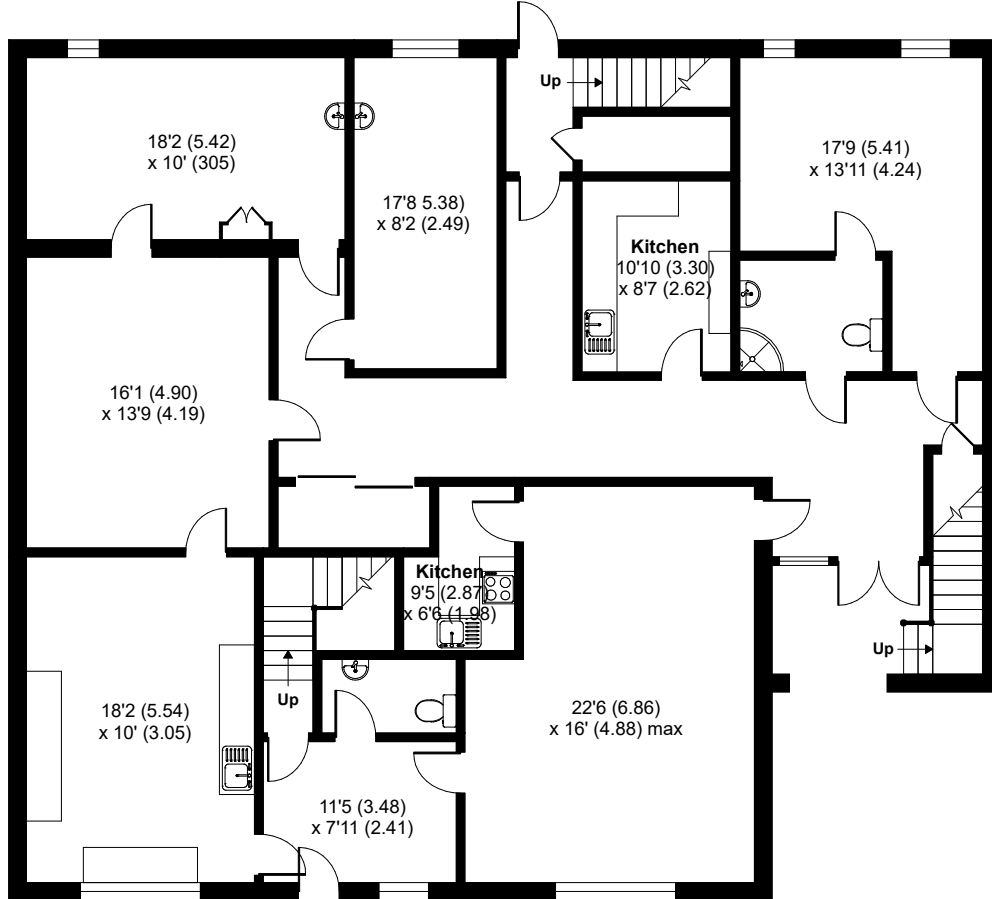


Colne Way Court, WD24

For identification only - Not to scale



FIRST FLOOR



GROUND FLOOR



Availability

The accommodation comprises the following areas:

Name	sq ft	sq m
Ground	2,230	207.17
1st	2,358	219.07
Total	4,588	426.24
Lease	New Lease	
Rent	£69,750 per annum	
Rates	£35,217 per annum	
Service Charge	On application	
VAT	Not applicable	
EPC	B (40)	

Contact

Christopher Smiddy

01923 911 007 | 07753 970 196
chris@forestrealestate.co.uk

Zach Forest

020 3370 4470 | 07890 209 397
zach@forestrealestate.co.uk

North West London Office

1 Bridge Lane, London, NW11 0EA
020 3355 1555

Watford Office

1a Local Board Road, Watford, WD17 2JP
01923 911 007

East London Office

18a Victoria Park Square, London, E2 9PB
020 3370 4470

www.forestrealestate.co.uk
info@forestrealestate.co.uk

Unit 2 Colne Way Court, Colne Way
Watford, WD24 7NE

F O R E S T
REAL ESTATE
INCORPORATING **Smiddy & Co**

The above information contained within this brochure is subject to contract. These particulars are for general information only and do not constitute any part of an offer or contract. All statements contained therein are made without responsibility on the part of the vendors or lessors and are not to be relied upon as statement or representation of fact. Intending purchasers or lessees must satisfy themselves, by inspection, or otherwise, as to the correctness of each of the statements of dimensions contained in these particulars. Generated on 26/07/2024