



Flat 2, 19 Cross Farm Green, Wedmore
Wedmore

£325,000



Flat 2

19 Cross Farm Green, Wedmore

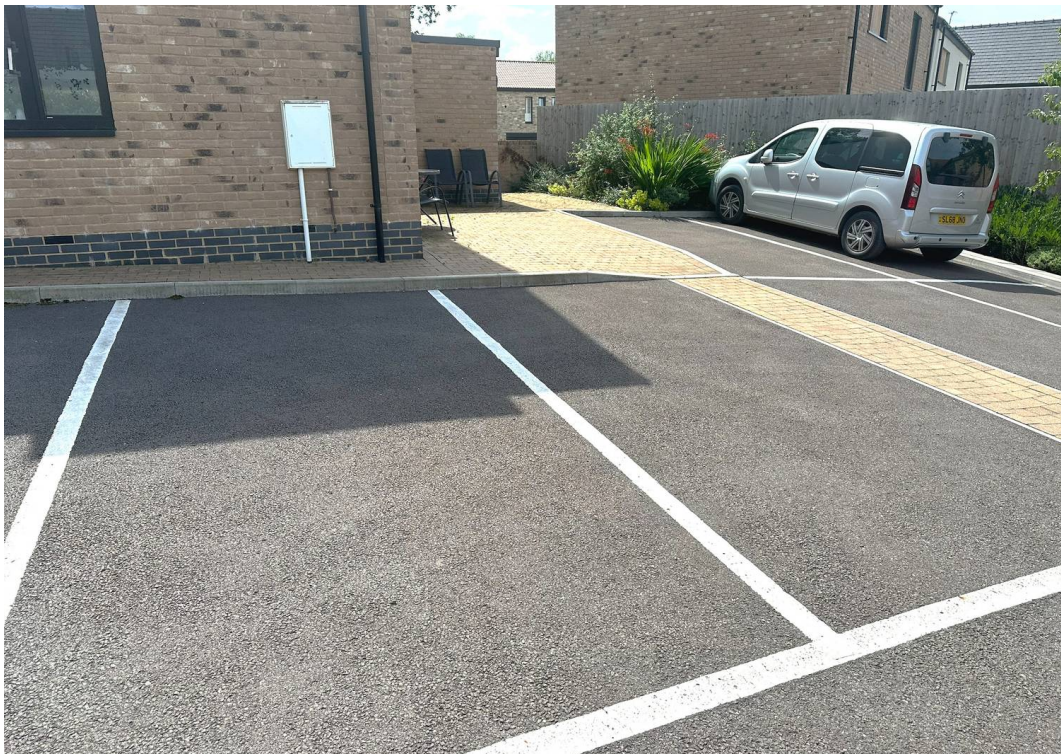
Nestled in the sought-after location of Wedmore, this stunning 2-bedroom apartment presents a fantastic opportunity for those in search of modern sophistication and convenient living. Situated on the ground floor of a new build estate, this large flat boasts a contemporary finish and fittings that exude luxury and style.

In addition to the en-suite, a well-appointed main bathroom serves the second bedroom and guests, ensuring convenience and privacy for all residents. With a contemporary design and impeccable attention to detail, every aspect of this apartment radiates a sense of modern elegance.

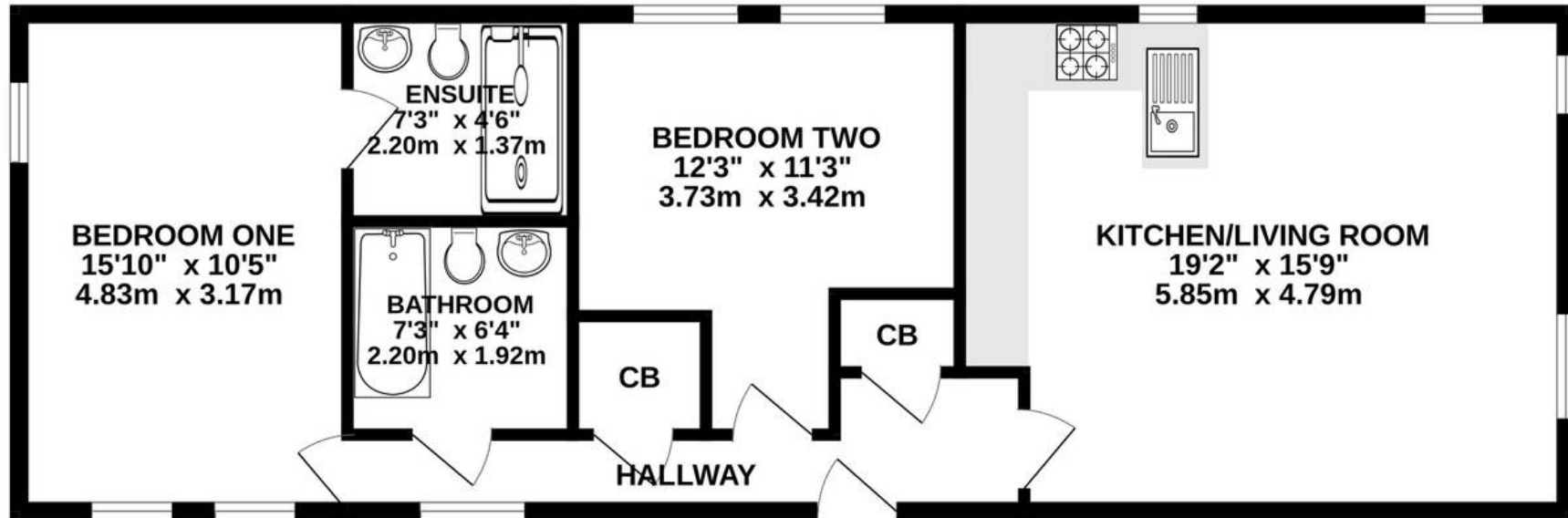
Parking will never be a concern, as this property comes with two dedicated parking spaces, providing ease and security for your vehicles. Furthermore, its proximity to local amenities ensures that daily necessities are within easy reach, enhancing the convenience of this prime location.

- Large Ground Floor Flat
- Modern Finish and Fittings
- Close to Local Amenities
- Large Bedroom with En-Suite
- New Build Estate





GROUND FLOOR
768 sq.ft. (71.3 sq.m.) approx.



TOTAL FLOOR AREA : 768 sq.ft. (71.3 sq.m.) approx.

Whilst every attempt has been made to ensure the accuracy of the floorplan contained here, measurements of doors, windows, rooms and any other items are approximate and no responsibility is taken for any error, omission or mis-statement. This plan is for illustrative purposes only and should be used as such by any prospective purchaser. The services, systems and appliances shown have not been tested and no guarantee as to their operability or efficiency can be given.

Made with Metropix ©2024



Charles Barnard Estate Agents

Masonic Lodge, Church Street - BS28 4AB

01934 710 000

Sales@charlesbarnard.co.uk

www.charlesbarnard.co.uk/

