



## Plot 6, Karsbrook Green, Kingskerswell - TQ12 5JS

Guide Price £365,000





## Plot 6, Karsbrook Green , Kingskerswell

Magnificent three-bed semi-detached house with contemporary design, high-spec finishes, and open-plan living. En suite, modern kitchen, landscaped garden, and off-road parking. A truly exceptional home for luxurious, versatile living.

Tenure: Freehold

- A recently constructed three bed semi-detached house
- Downstairs cloakroom/WC
- Open plan living space with bi-folding doors giving access to the garden
- Quality modern fitted kitchen with solid worktops and integrated appliances
- Three bedrooms, principal having an en suite shower room/WC and fitted bedroom furniture
- Family bathroom/WC
- Open views from the rear elevation over the surrounding area
- Front garden and good size, enclosed level rear garden
- Off road parking for up to three cars
- Part exchange considered



# Plot 6, Karsbrook Green

, Kingskerswell

Nestled within the serene surroundings of Kingskerswell, discover a harmonious blend of traditional charm and contemporary living at Karsbrook Green. Karsbrook Green is close to the neighbouring market town of Newton Abbot and within easy commute of Torbay (Torquay, Paignton, Brixham) and Exeter. Newton Abbot is a historic market town surrounded by beautiful South Devon countryside. The town is home to a large range of shops, restaurants and open spaces and is perfectly located close to both Dartmoor National Park and a wealth of seaside towns. Torbay is a large bay on Devon's south coast, overlooking clear blue waters from their vantage points along the bay are three towns: Paignton, Torquay and Brixham. These hills act as a sun-trap, allowing the bay to luxuriate in its own warm microclimate. It is the bays golden sands and rare propensity for fine weather that has led to the bay and its seaside towns being named the English Riviera.

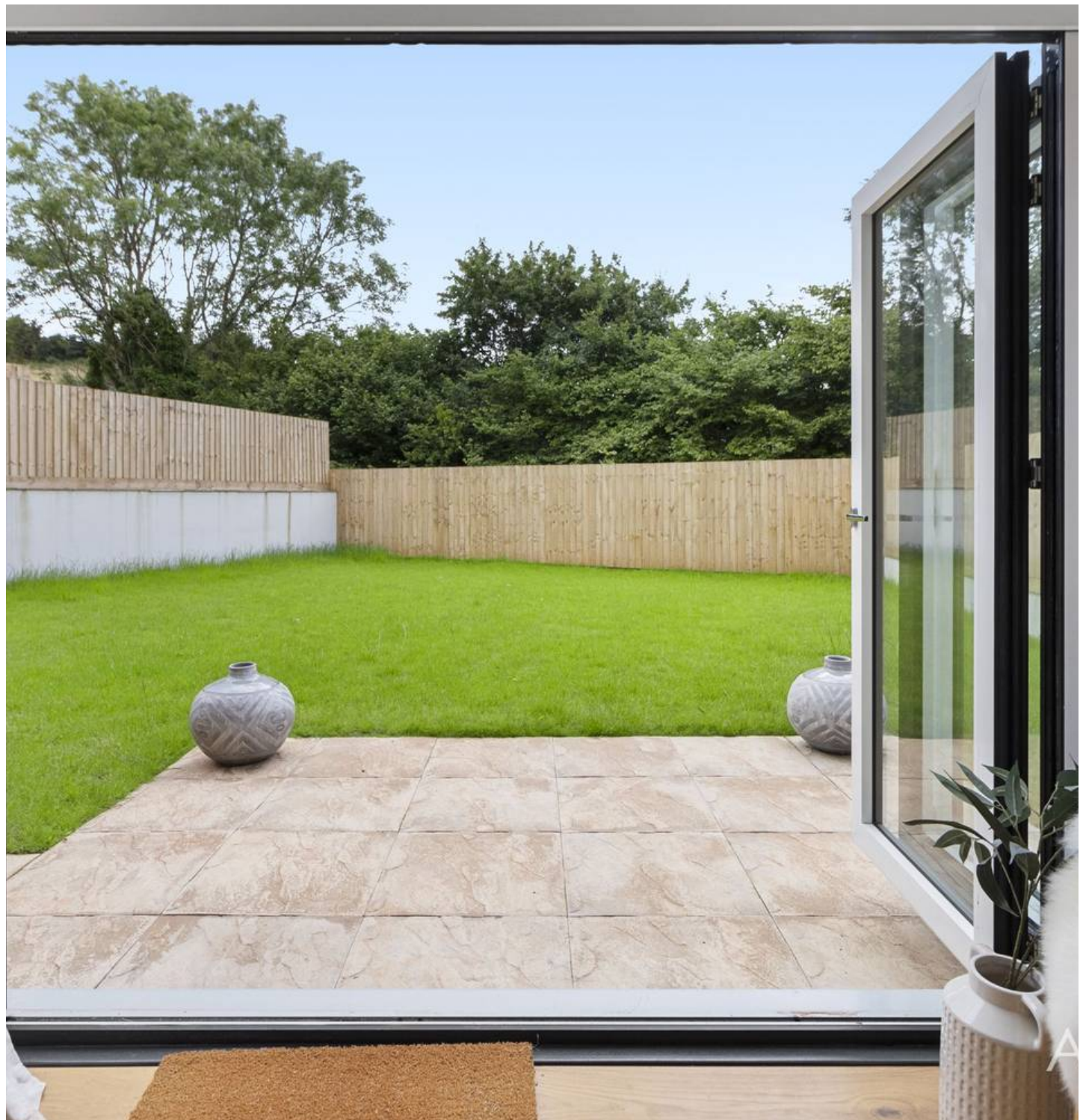
## Absolute Sales & Lettings

Absolute Sales & Lettings Ltd, 13 Ilsham Road - TQ1 2JG

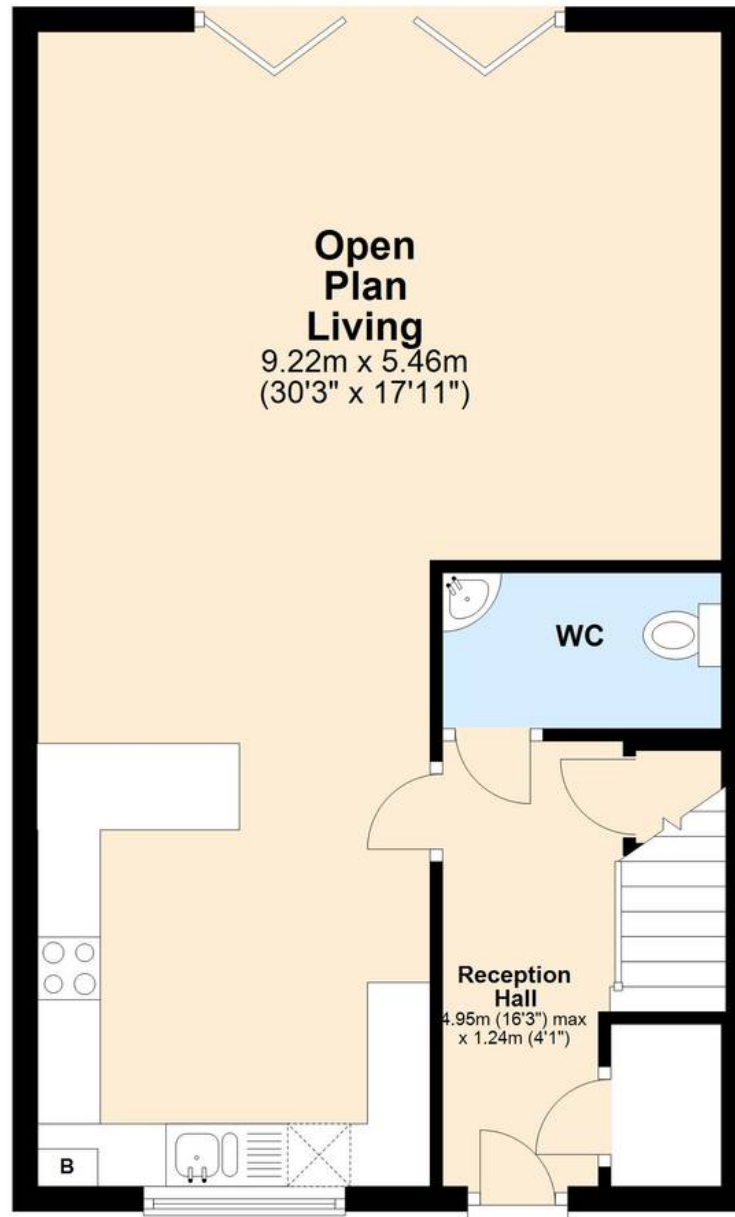
01803 214214

[torquay@movewithabsolute.co.uk](mailto:torquay@movewithabsolute.co.uk)

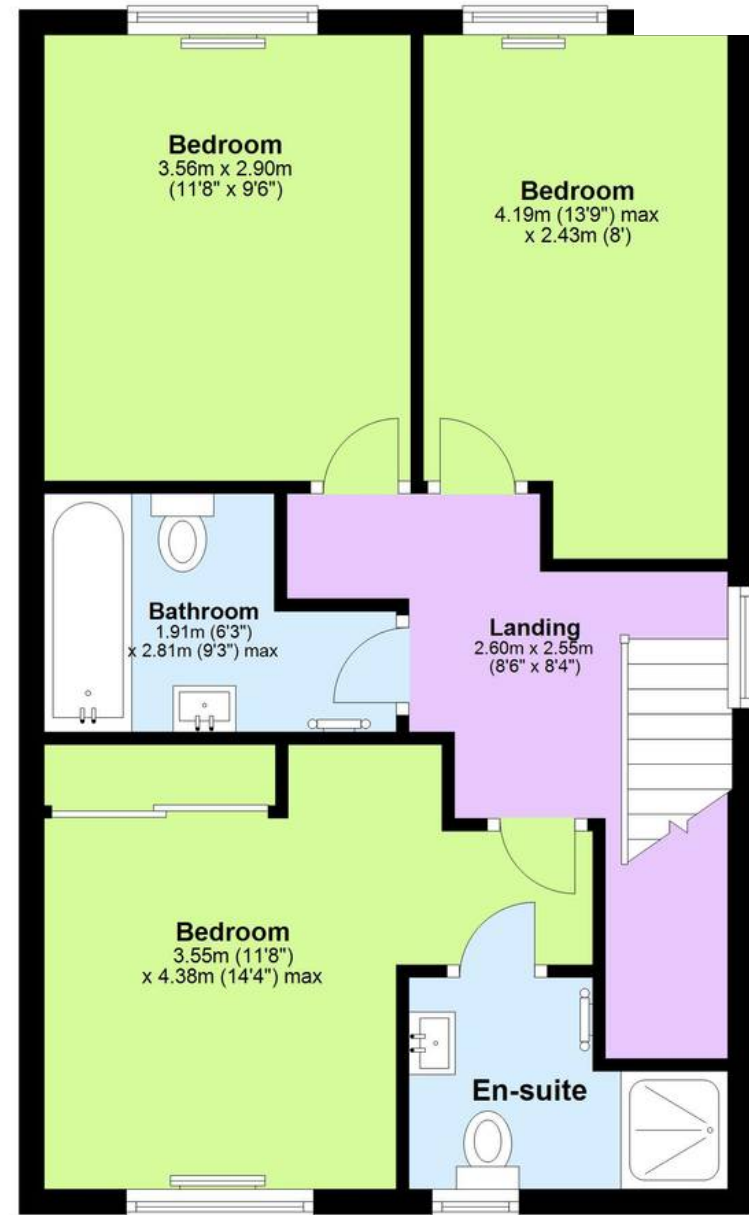
[movewithabsolute.co.uk/](http://movewithabsolute.co.uk/)



## Ground Floor



## First Floor



Approx  
Plan produced using PlanUp.