



Plot 21, Karsbrook Green, Kingskerswell – TQ12 5JS

Guide Price £550,000





Plot 21, Karsbrook Green , Kingskerswell

Luxurious 4-bed detached residence showcasing modern living at its finest. High-spec finish, open-plan design, modern kitchen with integrated appliances, underfloor heating, ensuite bedrooms, front & rear gardens. Ideal for those seeking comfort, style, and practicality in a serene setting.

Tenure: Freehold

- A recently constructed four bed detached residence finished to a high specification
- Downstairs cloakroom and separate study
- Open plan living space
- Quality modern fitted kitchen with solid worktops and integrated appliances
- Separate utility room
- Four double bedrooms, two with en suite shower room/WC
- Family bathrom/WC
- Under floor heating with engineered oak on the ground floor
- Front and rear gardens and tandem driveway parking
- Part exchange considered



Plot 21, Karsbrook Green

, Kingskerswell

Nestled within the serene surroundings of Kingskerswell, discover a harmonious blend of traditional charm and contemporary living at Karsbrook Green. Karsbrook Green is close to the neighbouring market town of Newton Abbot and within easy commute of Torbay (Torquay, Paignton, Brixham) and Exeter. Newton Abbot is a historic market town surrounded by beautiful South Devon countryside. The town is home to a large range of shops, restaurants and open spaces and is perfectly located close to both Dartmoor National Park and a wealth of seaside towns. Torbay is a large bay on Devon's south coast, overlooking clear blue waters from their vantage points along the bay are three towns: Paignton, Torquay and Brixham. These hills act as sun-trap, allowing the bay to luxuriate in its own warm microclimate. It is the bays golden sands and rare propensity for fine weather that has led to the bay and its seaside towns being named the English Riviera.

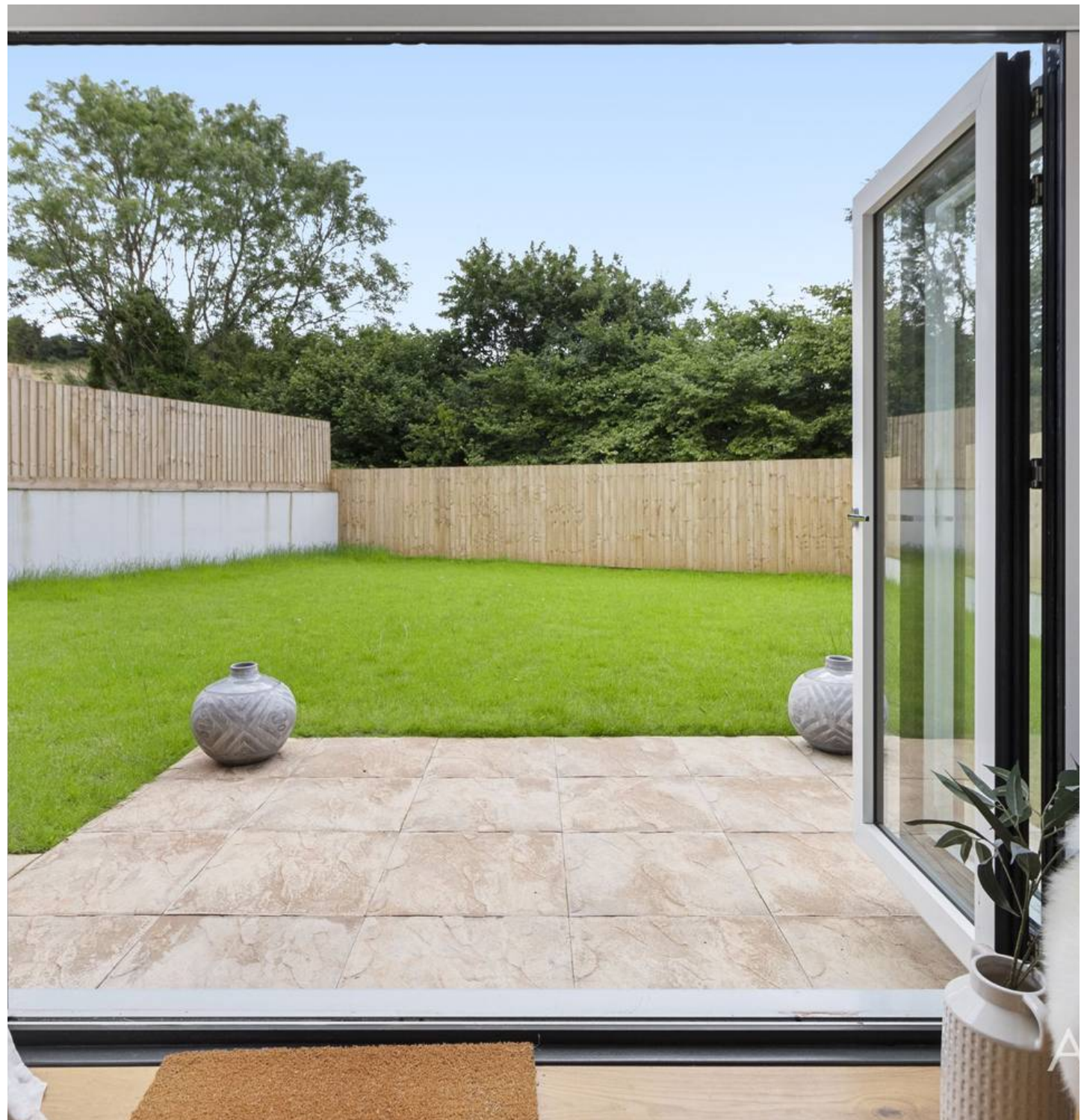
Absolute Sales & Lettings

Absolute Sales & Lettings Ltd, 13 Ilisham Road - TQ1 2JG

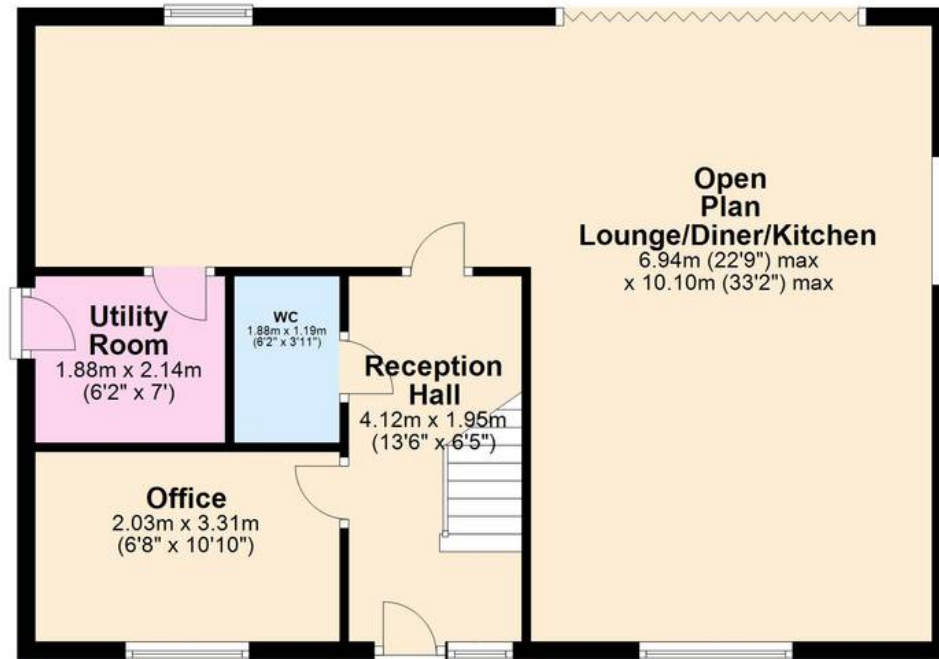
01803 214214

torquay@movewithabsolute.co.uk

movewithabsolute.co.uk/



Ground Floor



First Floor

