



35 Glenwood Drive, Armadale

Armadale

Offers Over **£230,000**



35 Glenwood Drive

, Armadale

Welcome to 35 Glenwood Drive, a charming and beautifully presented three-bedroom family home that boasts instant kerb appeal. Located in a sought-after residential area, this property has been thoughtfully upgraded by the current owners.

Upon entering the property, you are greeted by a spacious lounge, perfect for family gatherings and entertaining.

The ground floor also features a newly fitted kitchen with modern appliances, offering ample space for culinary adventures. A convenient WC is located near the entrance.

Ascending to the first floor, you will find three spacious bedrooms. The master bedroom provides a comfortable retreat, while the second bedroom offers ample space for family members or guests.



The third bedroom is flexible and currently poses as a cinema room complete with a projector, offering a unique space for entertainment. A family bathroom completes the upstairs accommodation.

Externally, the property benefits from a good-sized garden mainly laid with grass, providing a perfect space for outdoor activities and relaxation.

The driveway offers ample off-street parking and leads to a detached garage with convenient side access.

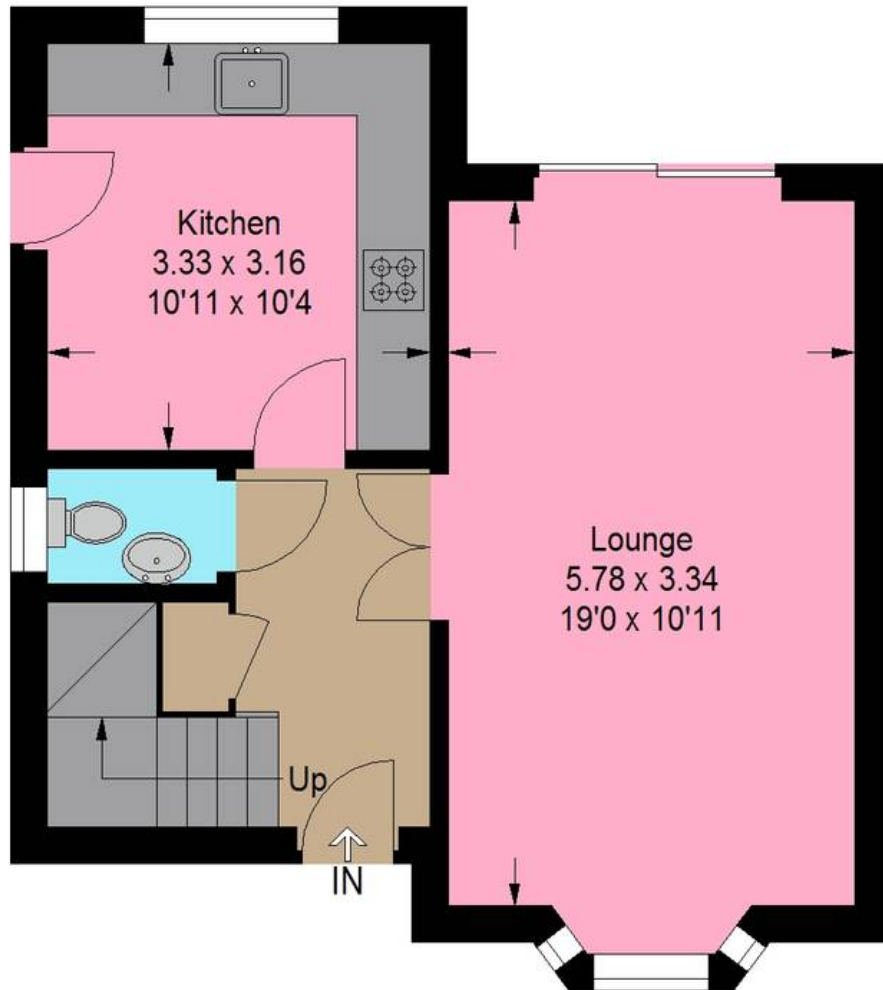
Additional upgrades include a newly installed boiler, ensuring efficient heating throughout the home.

35 Glenwood Drive is a must-see property that combines modern living with practical features, making it an ideal choice for families looking to settle in a desirable location.

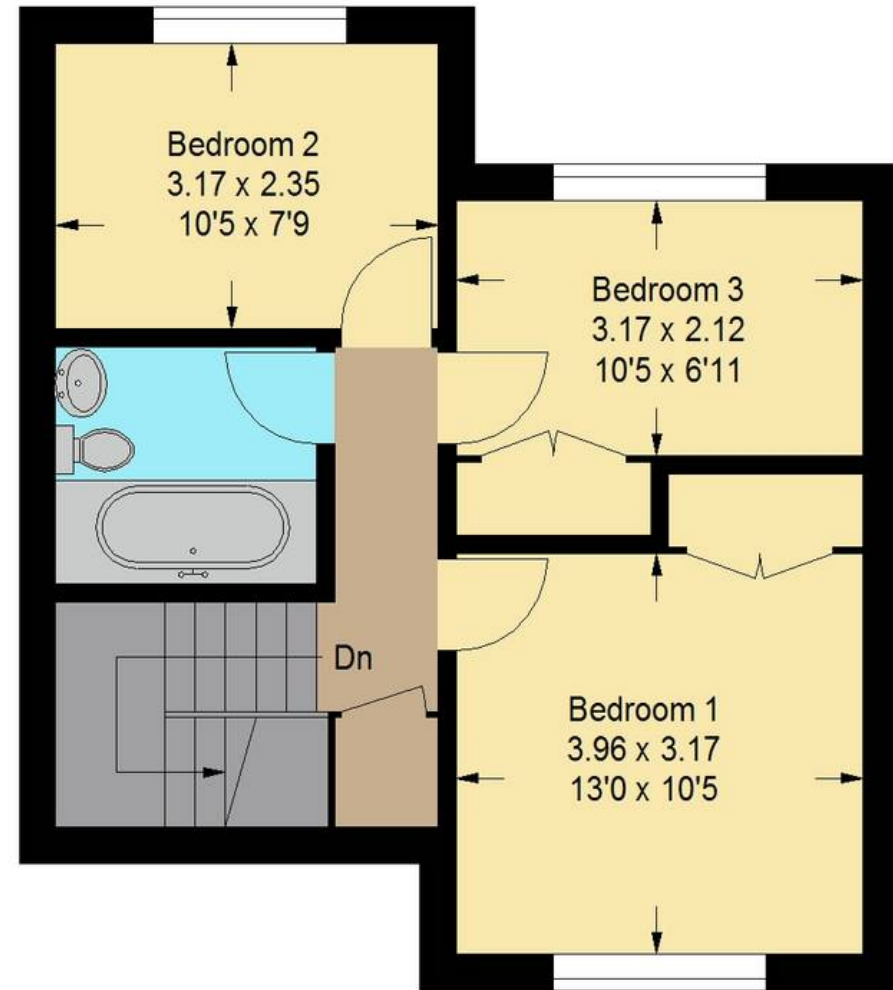




Approximate Gross Internal Area = 83.7 sq m / 901 sq ft



Ground Floor



First Floor

Illustration For Identification Purposes Only. Not To Scale (ID1109998 / Ref:88827)



Bridges Properties

94 West Main Street, Whitburn - EH47 0QU

01501519435

info@bridges-properties.co.uk

www.bridges-properties.co.uk/

