



200 Sundowner Newport Road, Hemsby

£25,000 Leasehold

GUIDE PRICE: £25,000-£30,000. Offering a comfortable retreat by the seaside, this two-bedroom chalet boasts a serene setting in the sought-after location of Hemsby. Situated in a quiet site just a short walk away from the picturesque Hemsby Beach, this property combines convenience with tranquillity, making it an ideal escape for those seeking a peaceful coastal lifestyle.

Council Tax band: A

Tenure: Leasehold

GUIDE PRICE: £25,000-£30,000. Offering a comfortable retreat by the seaside, this two-bedroom chalet boasts a serene setting in the sought-after location of Hemsby. Situated in a quiet site just a short walk away from the picturesque Hemsby Beach, this property combines convenience with tranquillity, making it an ideal escape for those seeking a peaceful coastal lifestyle.

Location

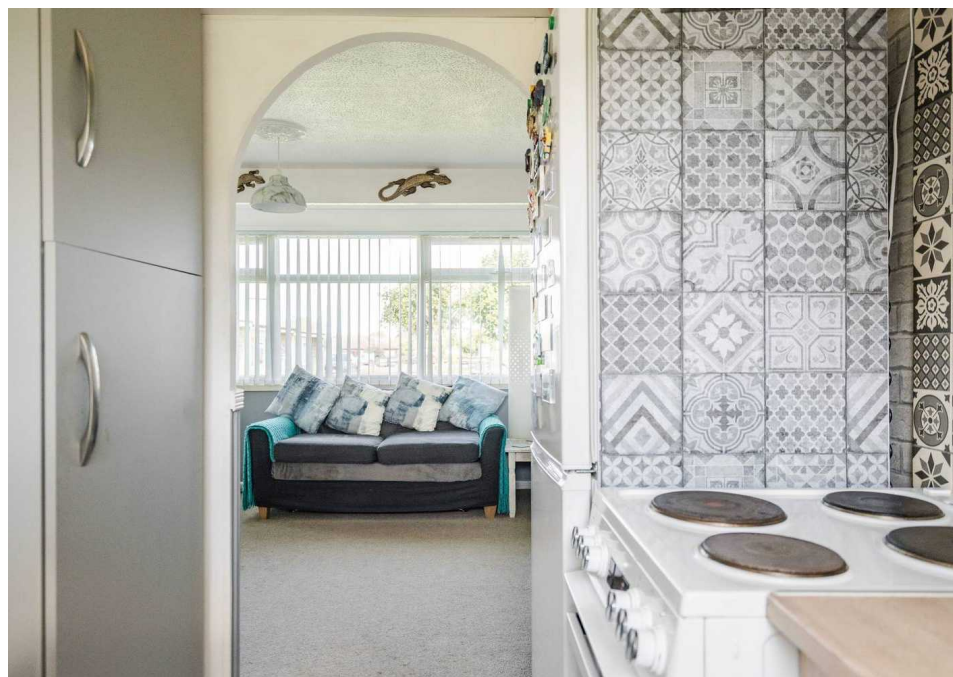
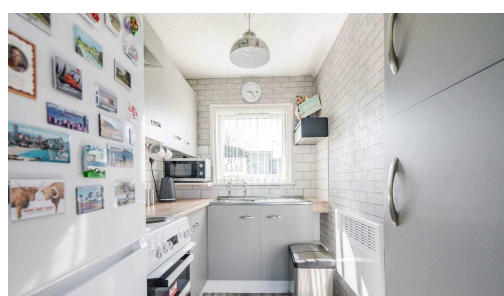
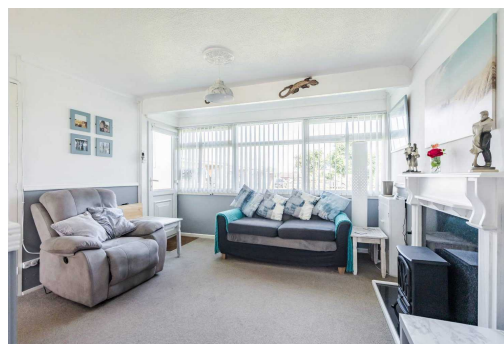
Newport Road offers an enticing escape in the heart of Norfolk's stunning coastline. Just a short stroll from the golden sands of Hemsby Beach, this location is perfect for those who love the sea, sun, and surf. The area is bustling with family-friendly attractions, ensuring there is always something to enjoy. Nature lovers will appreciate the nearby Winterton Dunes National Nature Reserve, a haven for wildlife and ideal for scenic walks. Hemsby itself boasts a welcoming community with a range of amenities, such as local shops, traditional pubs, and restaurants offering delicious seafood. With Great Yarmouth's bustling town centre and historic attractions only a short drive away, residents can enjoy the best of both tranquil



GUIDE PRICE: £25,000-£30,000. Offering a comfortable retreat by the seaside, this two-bedroom chalet boasts a serene setting in the sought-after location of Hemsby. Situated in a quiet site just a short walk away from the picturesque Hemsby Beach, this property combines convenience with tranquillity, making it an ideal escape for those seeking a peaceful coastal lifestyle.

Location

Newport Road offers an enticing escape in the heart of Norfolk's stunning coastline. Just a short stroll from the golden sands of Hemsby



GUIDE PRICE: £25,000-£30,000. Offering a comfortable retreat by the seaside, this two-bedroom chalet boasts a serene setting in the sought-after location of Hemsby. Situated in a quiet site just a short walk away from the picturesque Hemsby Beach, this property combines convenience with tranquillity, making it an ideal escape for those seeking a peaceful coastal lifestyle.

Location

Newport Road offers an enticing escape in the heart of Norfolk's stunning coastline. Just a short stroll from the golden sands of Hemsby Beach, this location is perfect for those who love the sea, sun, and surf. The area is bustling with family-friendly attractions, ensuring there is always something to enjoy. Nature lovers will appreciate the nearby Winterton Dunes National Nature Reserve, a haven for wildlife and ideal for scenic walks. Hemsby itself boasts a welcoming community with a range of amenities, such as local shops, traditional pubs, and restaurants offering delicious seafood. With Great Yarmouth's bustling town centre and historic attractions only a short drive away, residents can enjoy the best of both tranquil seaside living and vibrant local culture. This residence is perfectly positioned to provide an unforgettable coastal experience, blending relaxation with a wealth of activities right at your doorstep.

Newport Road

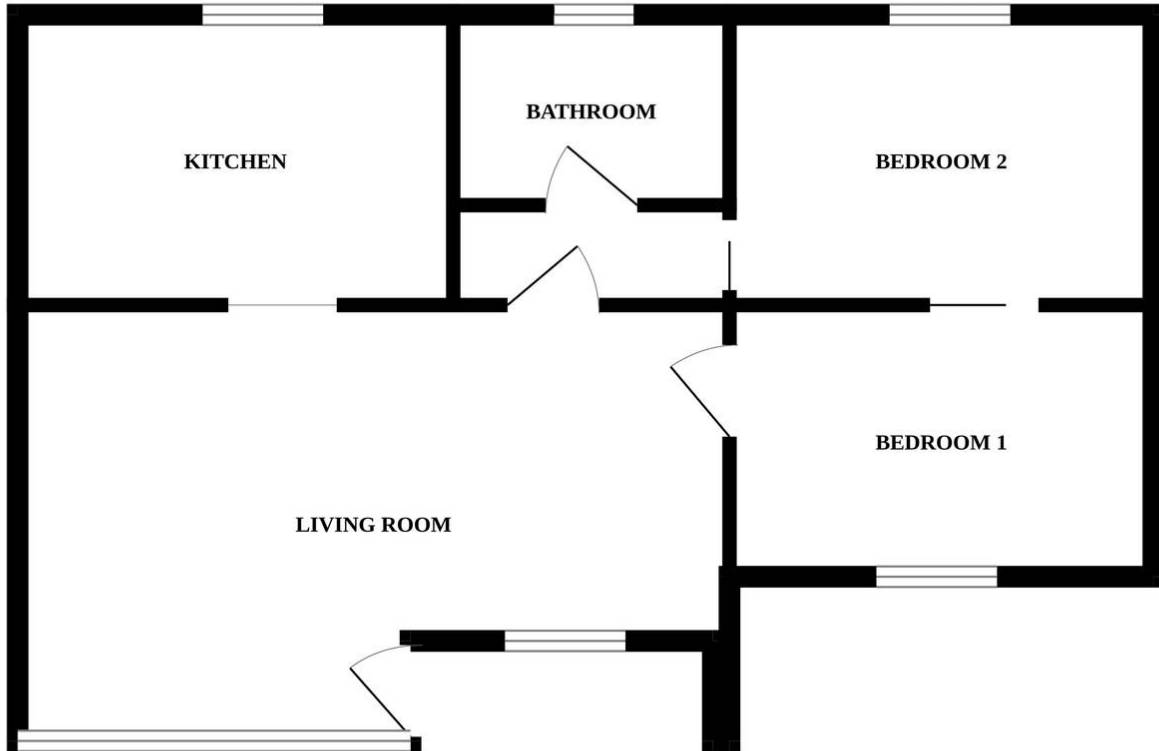
Step inside this spacious chalet to discover a bright and airy interior that exudes a welcoming ambience throughout. The living room provides a space to relax and entertain, while the kitchen offers functionality for culinary endeavours. The two bedrooms offer comfortable sleeping quarters, or a versatile space to meet the needs of the new residents. For added convenience, both bedrooms have fitted wardrobes. Additionally, the chalet includes a bathroom that has an electric shower above the bath, as well as a small utility space provides practicality for every-day tasks.

Embracing a pet-friendly policy, this property ensures that furry companions are welcome to enjoy the seaside living experience alongside their owners. For added convenience, external storage is available.

Benefiting from electric heating and double glazing, this chalet guarantees warmth and comfort all year round, creating a cosy haven regardless of the season. While this property isn't for permanent living, it offers an eight-month season from 1st March to 31st October annually, allowing you to make the most of seaside living during the warmer months.



GROUND FLOOR



Whilst every attempt has been made to ensure the accuracy of the floorplan contained here, measurements of doors, windows, rooms and any other items are approximate and no responsibility is taken for any error, omission or mis-statement. This plan is for illustrative purposes only and should be used as such by any prospective purchaser. The services, systems and appliances shown have not been tested and no guarantee as to their operability or efficiency can be given.
Made with Metropix ©2024

You can include any text here. The text can be modified upon generating your brochure.

You can include any text here. The text can be modified upon generating your brochure.

