



Plot 25, Karsbrook Green, Kingskerswell - TQ12 5JS

Guide Price £535,000





Plot 25, Karsbrook Green , Kingskerswell

Exquisite 4-bed detached property in serene location. Chic design, open living space, modern kitchen, separate utility, en suite principal bedroom, underfloor heating, landscaped gardens, driveway, home office, luxury finishes throughout. Perfect blend of style and functionality for modern living.

Tenure: Freehold

- A recently constructed 4 bed detached residence finished to a high specification
- Downstairs cloakroom/WC and office
- Open plan living space
- Quality modern fitted kitchen with solid worktops and integrated appliances and separate utility room
- Four double bedrooms, principal having an en suite shower room/WC
- Family bathroom/WC
- Underfloor heating covered by engineered oak flooring to the ground floor
- Double width driveway parking
- Landscaped front garden and level enclosed rear garden
- Part exchange considered



Plot 25, Karsbrook Green

, Kingskerswell

Nestled within the serene surroundings of Kingskerswell, discover a harmonious blend of traditional charm and contemporary living at Karsbrook Green. Karsbrook Green is close to the neighbouring market town of Newton Abbot and within easy commute of Torbay (Torquay, Paignton, Brixham) and Exeter. Newton Abbot is a historic market town surrounded by beautiful South Devon countryside. The town is home to a large range of shops, restaurants and open spaces and is perfectly located close to both Dartmoor National Park and a wealth of seaside towns. Torbay is a large bay on Devon's south coast, overlooking clear blue waters from their vantage points along the bay are three towns: Paignton, Torquay and Brixham. These hills act as sun-trap, allowing the bay to luxuriate in its own warm microclimate. It is the bays golden sands and rare propensity for fine weather that has led to the bay and its seaside towns being named the English Riviera.

Absolute Sales & Lettings

Absolute Sales & Lettings Ltd, 13 Ilsham Road - TQ1 2JG

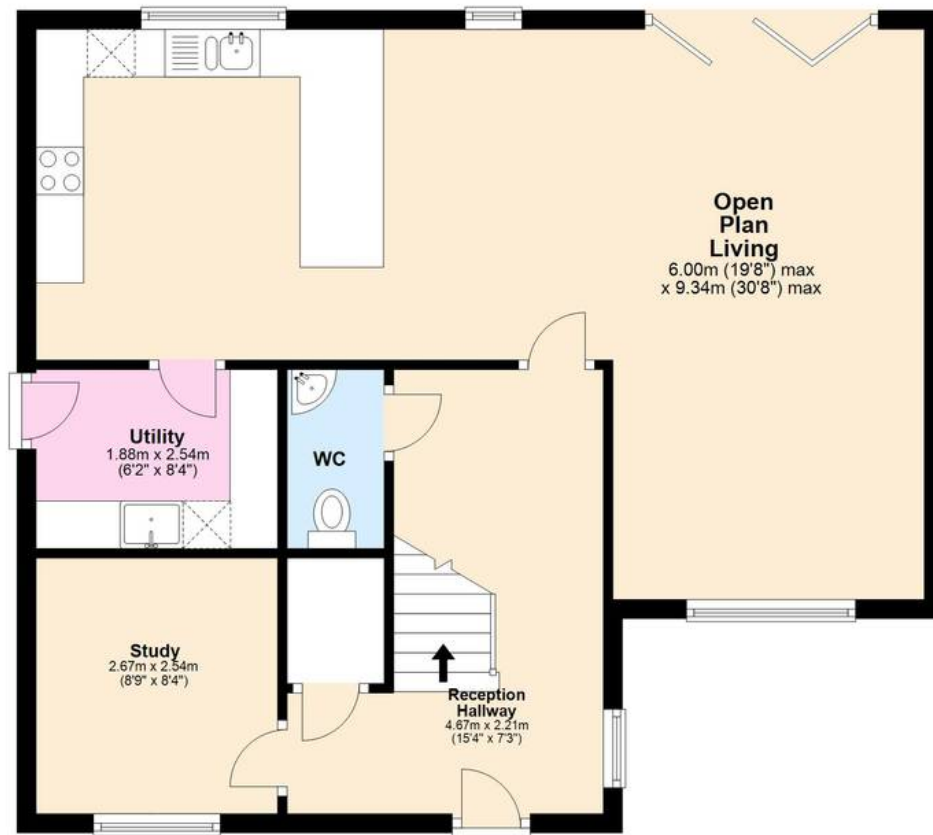
01803 214214

torquay@movewithabsolute.co.uk

movewithabsolute.co.uk/



Ground Floor



First Floor

