

Langton Street, Salford

Salford



£180,000

62 Langton Street

Salford, Salford

This STYLISH two bedroom terraced property is ideally located within walking distance of Media City & Salford Quays! Well-presented throughout, it would be great for someone who is looking for a property they can pack their bags and move into!

- Two Bedroom Terraced Property
- Within Walking Distance of Media City and Salford Quays, which are Host to a Fine Array of Bars, Shops and Restaurants
- Stylish Lounge and a Spacious Dining Room, with Patio Doors to the Rear
- Modern Fitted Kitchen and a Three-Piece Fitted Bathroom
- Low Maintenance Courtyard Garden to the Rear
- Within Walking Distance of Langworthy Tram Stop, which Provides Direct Access into Manchester City Centre
- Ideal for First Time Buyers and Investors
- Early Viewing Advised



Hallway

Ceiling light point

Lounge

Dimensions: 10' 10" x 9' 6" (3.3m x 2.9m). Ceiling light point, double glazed window to the front and wall mounted radiator.

Dining Room

Dimensions: 12' 10" x 10' 6" (3.9m x 3.2m). Ceiling light point, patio doors to the rear and wall mounted radiator.

Kitchen

Dimensions: 7' 7" x 6' 11" (2.3m x 2.1m). Fitted with a range of wall and base units and an integral sink and drainer unit. Integrated oven and hob unit with space for fridge freezer and washing machine. Ceiling light point.

Landing

Ceiling light point and access to bedrooms and bathroom.

Bedroom One

Dimensions: 10' 10" x 11' 6" (3.3m x 3.5m). Ceiling light point, double glazed window and wall mounted radiator.

Bedroom Two

Dimensions: 11' 10" x 7' 7" (3.6m x 2.3m). Ceiling light point, double glazed window and wall mounted radiator.

Bathroom

Dimensions: 7' 10" x 6' 11" (2.4m x 2.1m). Fitted with a three piece suite including a hand wash basin, W/C and shower cubicle. Ceiling light point and double glazed window.

Externally

To the rear is a low maintenance court yard.



HILLS



Hallway

Ceiling light point

Lounge

Dimensions: 10' 10" x 9' 6" (3.3m x 2.9m). Ceiling light point, double glazed window to the front and wall mounted radiator.

Dining Room

Dimensions: 12' 10" x 10' 6" (3.9m x 3.2m). Ceiling light point, patio doors to the rear and wall mounted radiator.

Kitchen

Dimensions: 7' 7" x 6' 11" (2.3m x 2.1m). Fitted with a range of wall and base units and an integral sink and drainer unit. Integrated oven and hob unit with space for fridge freezer and washing machine. Ceiling light point.

Landing

Ceiling light point and access to bedrooms and bathroom.

Bedroom One

Dimensions: 10' 10" x 11' 6" (3.3m x 3.5m). Ceiling light point, double glazed window and wall mounted radiator.

Bedroom Two

Dimensions: 11' 10" x 7' 7" (3.6m x 2.3m). Ceiling light point, double glazed window and wall mounted radiator.

Bathroom

Dimensions: 7' 10" x 6' 11" (2.4m x 2.1m). Fitted with a three piece suite including a hand wash basin, W/C and shower cubicle. Ceiling light point and double glazed window.

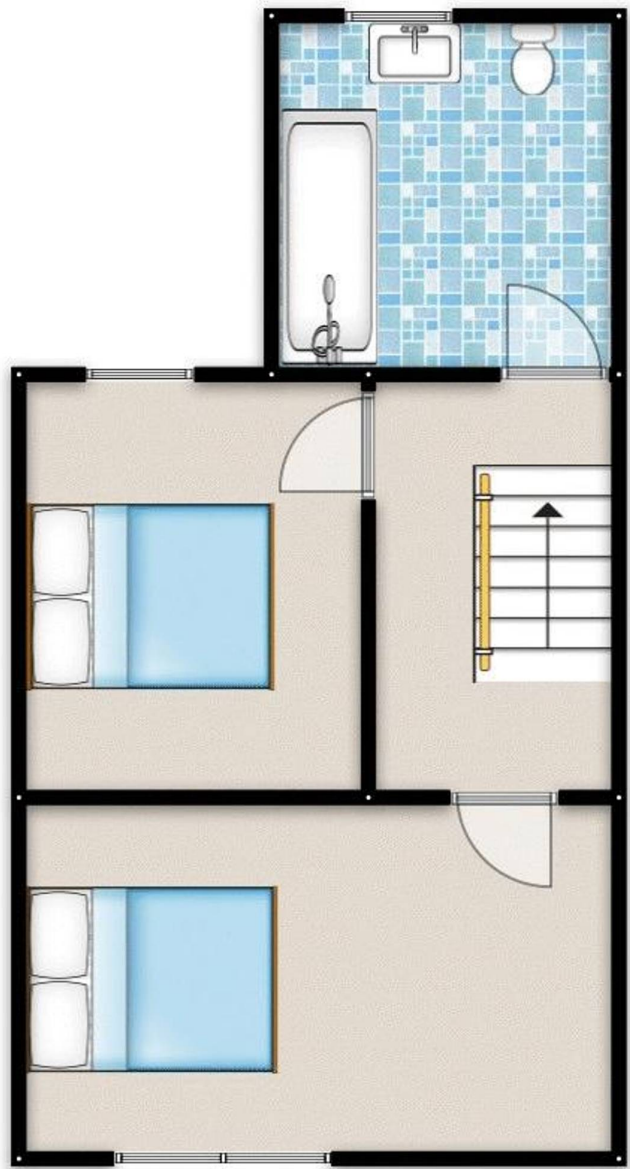
Externally

To the rear is a low maintenance court yard.



HILLS





HILLS

You can include any text here. The text can be modified upon generating your brochure.

