



Plot 18 The Maude, New Romney

New Romney

£430,000

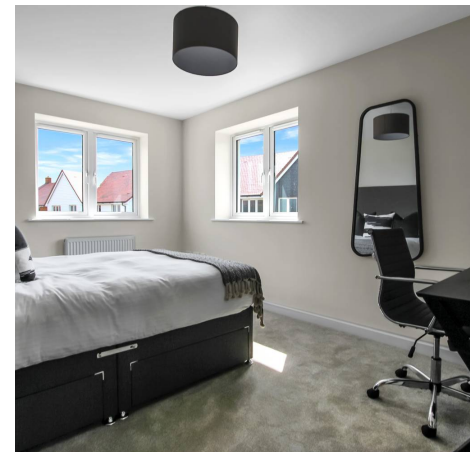
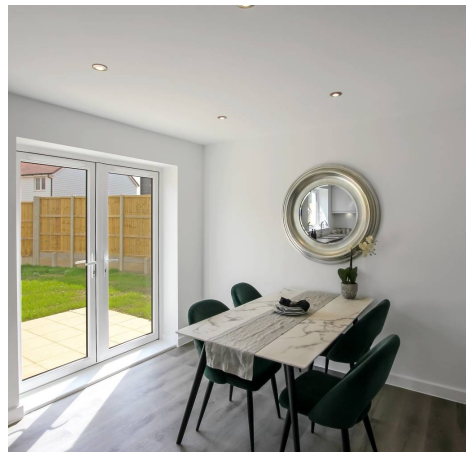
Plot 18 The Maude

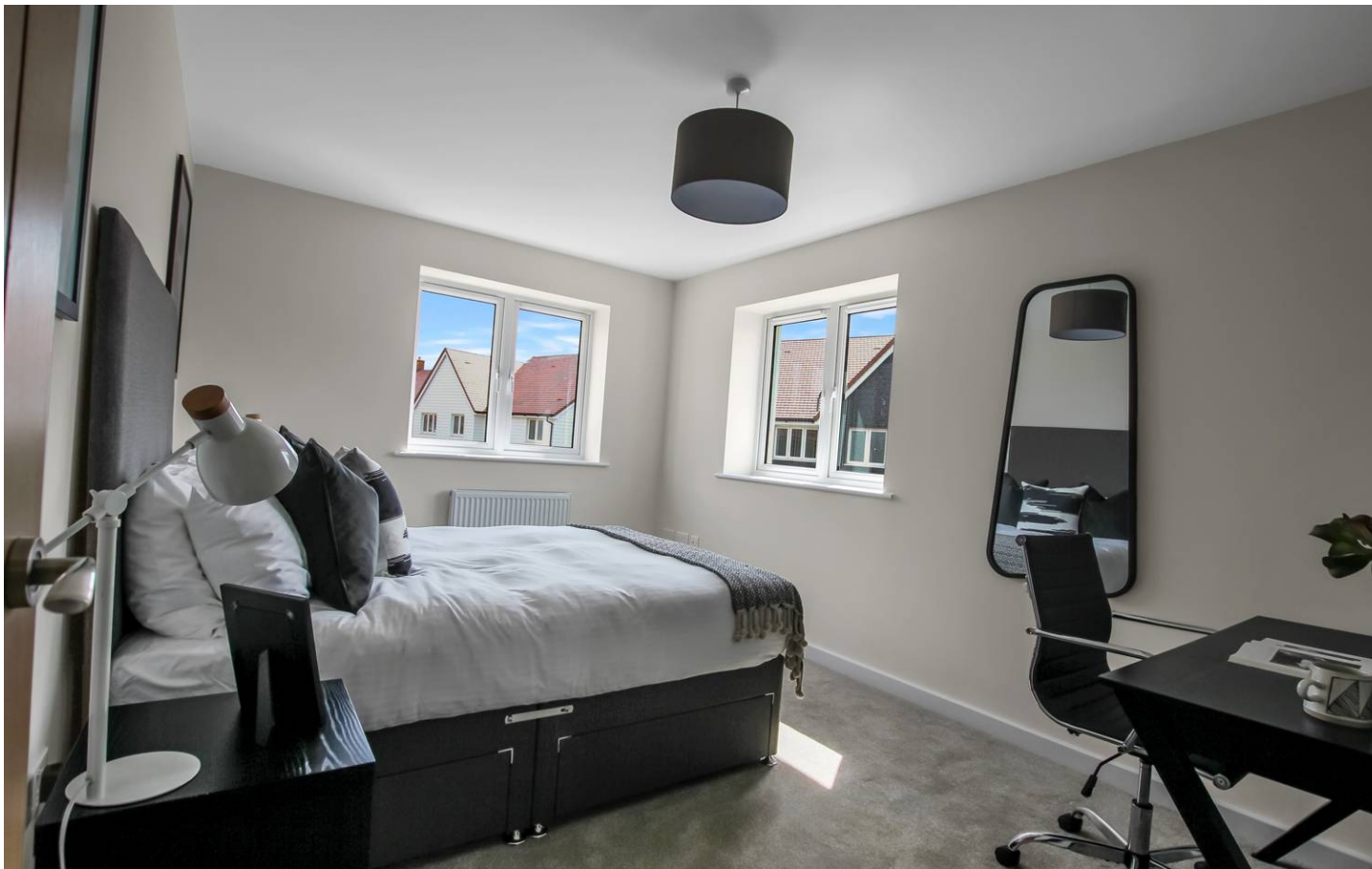
, New Romney

Buy using a green mortgage deal --- New Build
Three bed semi-detached in New Romney. Spacious layout, large living room, modern kitchen, garden with open views. 2 car spaces, close to amenities, Littlestone Beach. Ready by August 2024. Ideal for families, book your viewing now!

Tenure: Freehold

- Buy Using a Green Mortgage Deal
- Three Bedroom
- Semi Detached Home
- Large Living Space
- Open Views to Rear
- En-Suite to Master Bedroom
- Large Garden
- High Specification





Entrance Hall

Living Room

17' 7" x 17' 11" (5.36m x 5.47m)

Kitchen

15' 6" x 12' 3" (4.72m x 3.74m)

Wc

Landing

Bedroom

14' 10" x 11' 6" (4.53m x 3.50m)

En-Suite Shower Room

Bedroom

13' 11" x 10' 3" (4.25m x 3.13m)

Bedroom

13' 11" x 7' 3" (4.25m x 2.22m)

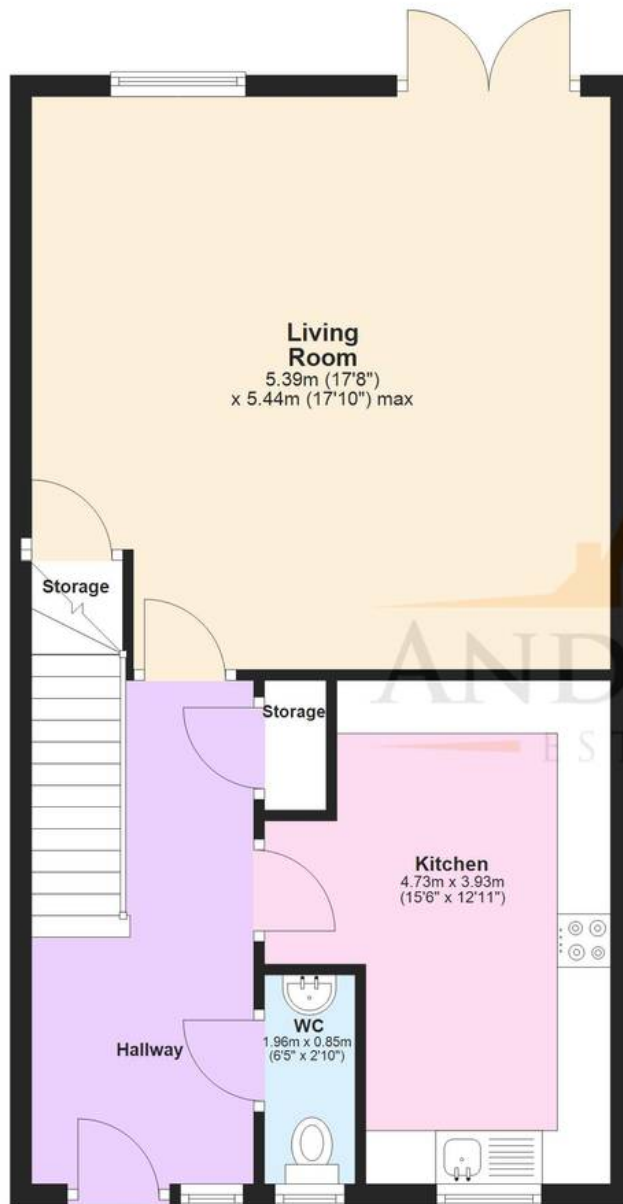
Bathroom





Basement

Approx. 58.8 sq. metres (633.0 sq. feet)



First Floor

Approx. 54.8 sq. metres (589.9 sq. feet)



Total area: approx. 113.6 sq. metres (1222.8 sq. feet)

Plans are for layout purposes only and not drawn to scale, with any doors, windows and other internal features merely intended as a guide.

Plan produced using PlanUp.

These particulars are intended to give a fair and reliable description of the property but no responsibility for any inaccuracy or error can be accepted and do not constitute an offer or contract. We have not tested any services or appliances (including central heating if fitted) referred to in these particulars and purchasers are advised to satisfy themselves as to the working order and condition, if a property is unoccupied at any time there may be reconnection charges for any switched off/disconnected or drained services or appliances. All measurements are approximate.



Andrew & Co Estate Agents - New Romney

01797 362898

newromney@andrewandco.co.uk

