



90 Glenalmond, Whitburn

Whitburn

Offers Over £240,000



90 Glenalmond

Welcome to this beautifully reconfigured four-bedroom bungalow, situated within a tranquil cul-de-sac in a highly desirable street in Whitburn. This home has been thoughtfully upgraded by the current owners, offering modern conveniences and ample living space.

Upon entering, you are greeted by a vestibule that leads into a spacious living room, perfect for relaxing with family and friends. The adjacent dining room is ideal for entertaining and family meals. The well-appointed kitchen is conveniently located next to the dining area, providing easy access for meal preparation.

The property features four generously sized bedrooms. Bedroom 1 includes a recently added ensuite, enhancing the comfort and privacy of the home. Bedroom 2, Bedroom 3, and Bedroom 4 offer versatile space, suitable for family, guests, or home office use. The property also includes a modern family bathroom, ensuring there are ample facilities for all residents and guests.



Recent upgrades to the property include new windows and doors, ensuring energy efficiency and a fresh, contemporary look. The exterior has been re-rough casted, adding to the home's curb appeal and durability.

The south/west facing garden provides a sunny and private outdoor space, perfect for gardening, relaxation, or outdoor dining. The property also benefits from a driveway and a detached garage, offering secure parking and additional storage space.

This charming bungalow in Whitburn offers a perfect blend of comfort, convenience, and modern living. Don't miss the opportunity to make this delightful property your new home.

Council Tax band: E

Tenure: Freehold

EPC Energy Efficiency Rating: D

EPC Environmental Impact Rating: D





Approximate Gross Internal Area = 110.8 sq m / 1193 sq ft

Garage = 18.8 sq m / 202 sq ft

Total = 129.6 sq m / 1395 sq ft

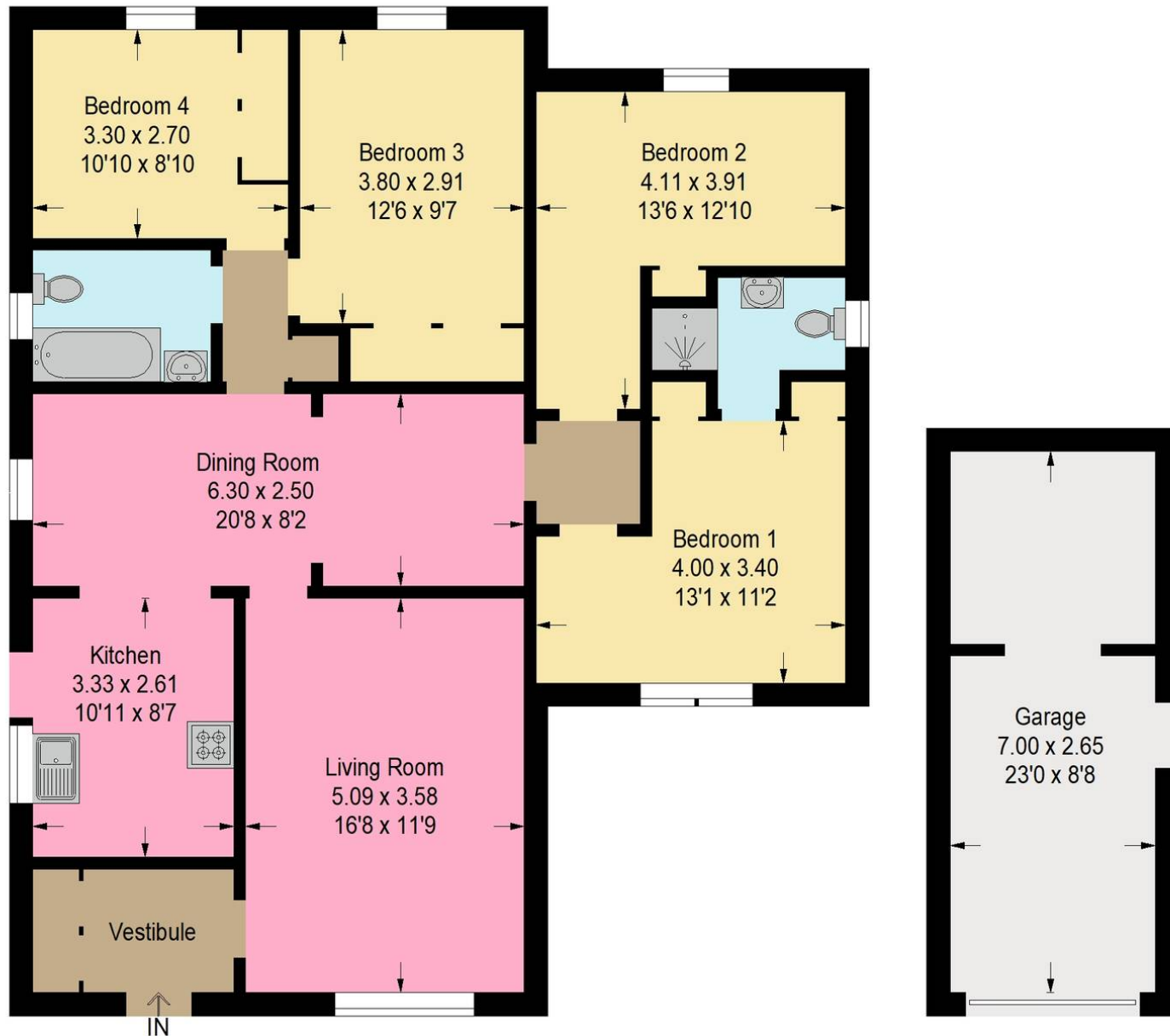


Illustration For Identification Purposes Only. Not To Scale (ID:1109608 / Ref:88819)



Bridges Properties

94 West Main Street, Whitburn - EH47 0QU

01501519435

info@bridges-properties.co.uk

www.bridges-properties.co.uk/

