



 **BRIDGES**
PROPERTIES
Your Property, Our Priority
Website: [bridgesproperties.co.uk](https://www.bridgesproperties.co.uk)
Phone: [bridgesproperties.co.uk](https://www.bridgesproperties.co.uk)
FOR SALE

22 Lomond Crescent, Whitburn

Whitburn

Offers Over **£130,000**



22 Lomond Crescent

, Whitburn

Welcome to this charming 2-bedroom semi-detached home located in the desirable area of Lomond Crescent, Whitburn. This delightful property boasts a well-maintained garden at the front, with beautiful plants and lush artificial grass, offering a warm and welcoming approach. The garden also features a section with a drop kerb that, while currently covered in artificial grass, can easily be converted back into a convenient driveway if desired.

Upon entering the home, you are greeted by an inviting entrance hall that leads you into a bright and spacious lounge. This room is the perfect space for relaxing or entertaining, featuring a stylish electric fireplace that adds warmth and character. The large under-stairs storage cupboard provides ample storage space, ensuring a clutter-free living area.

The lounge seamlessly flows into the generously sized kitchen, which is fitted with modern white high-gloss cabinetry and contrasting black worktops. The kitchen offers plenty of workspace and storage options, including a sizeable pantry cupboard currently utilized for a fridge/freezer but could be adapted for additional storage needs. A door from the kitchen opens onto the rear garden, offering easy access for outdoor dining and leisure.

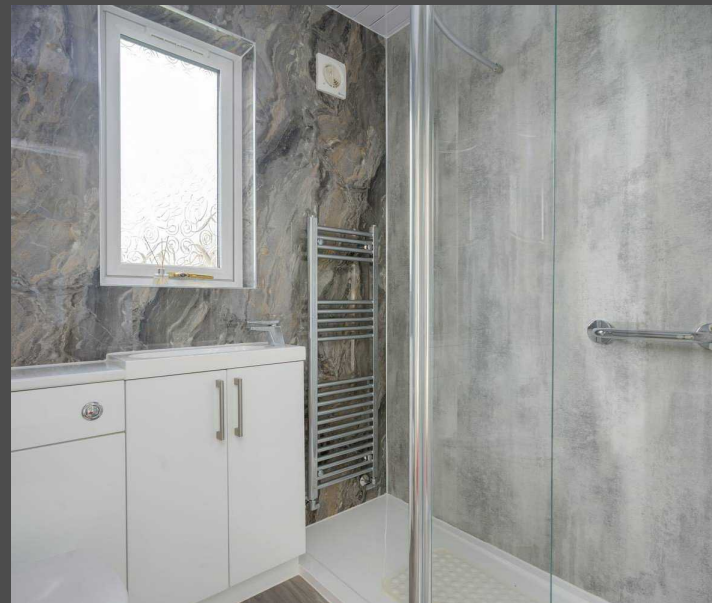


Step outside to discover a tranquil oasis. The rear garden is a peaceful retreat, complete with a patio area, artificial grass, and stunning floral archways that create a sense of serenity and privacy. These archways lead to a delightful secret garden space at the back, perfect for relaxation or a quiet escape.

Upstairs, you will find two well-proportioned bedrooms, that offer comfort and versatility, providing plenty of space for sleeping quarters, a home office, or a guest room. Both rooms also benefit from ample storage from built-in wardrobes. The bathroom is modernly designed with a large walk-in shower and sleek wet wall paneling, offering a fresh and contemporary feel.

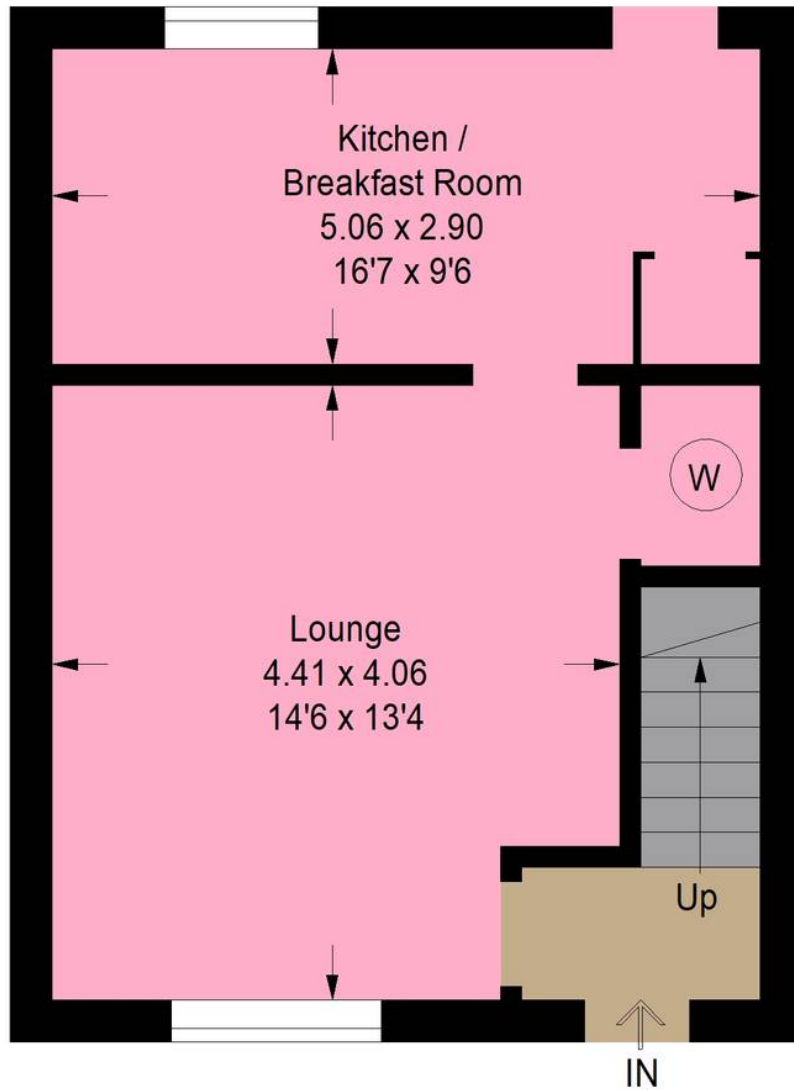
Ideal for first-time buyers, young families, or those looking to downsize, this property in Lomond Crescent offers a fantastic blend of comfort, potential, and convenience. Don't miss the chance to make this house your home.

Contact us today to arrange a viewing and explore the possibilities that await in this delightful Whitburn property.

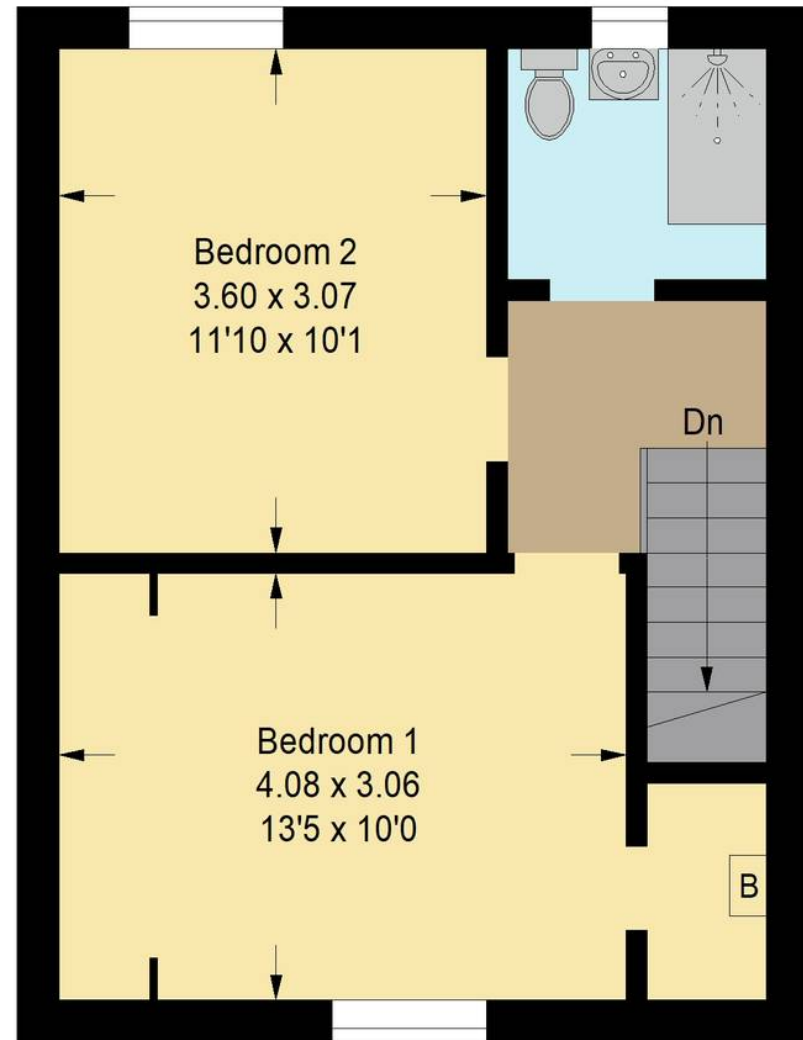




Approximate Gross Internal Area = 68.6 sq m / 738 sq ft



Ground Floor



First Floor

Illustration For Identification Purposes Only. Not To Scale (ID1110443 / Ref:88850)



Bridges Properties

94 West Main Street, Whitburn - EH47 0QU

01501519435

info@bridges-properties.co.uk

www.bridges-properties.co.uk/

