



**4 Northfield Meadows, Longridge**

Longridge

Offers Over **£230,000**



## 4 Northfield Meadows

, Longridge

Welcome to this charming and impeccably finished two-bedroom bungalow, ideally situated on a spacious corner plot with stunning countryside views. This delightful home combines modern upgrades with cosy features, making it a perfect choice for young families, first-time buyers, or those looking to downsize without compromising on quality and comfort.

Upon entering, you'll be greeted by an inviting entrance hall that sets the tone for the home's welcoming ambiance. The property has been finished to a high standard throughout, featuring upgraded internal doors and elegant hardwood flooring in the lounge and dining room. The lounge is a standout space, boasting a fitted log burner that adds warmth and character, making it an ideal spot to relax and unwind.

The recently upgraded kitchen offers a sleek and modern design, equipped with high-quality fixtures and appliances that cater to all your culinary needs. Adjacent to the kitchen, the dining room provides a seamless flow for entertaining guests or enjoying family meals.



The property benefits from a new bathroom, fitted with contemporary fixtures that provide a spa-like experience, ensuring both style and functionality. Two generously-sized bedrooms provide ample space and natural light, creating a peaceful retreat for rest and relaxation.

One of the property's key highlights is the large conservatory, which bathes the interior in natural light and offers panoramic views of the beautifully landscaped garden. This space can serve as a versatile area for leisure or dining, perfect for enjoying the changing seasons. The conservatory opens directly onto the garden, providing a seamless transition between indoor and outdoor living.

The landscaped garden itself is a haven for outdoor enthusiasts, offering plenty of space for gardening, play, or simply soaking in the serene environment. The bungalow's corner plot ensures privacy and provides breathtaking countryside views that can be enjoyed from both the garden and conservatory.

Practicality is further enhanced with a driveway that accommodates up to four cars, along with ample visitor parking, ensuring convenience for residents and guests alike.

Located in a desirable area, this property offers the perfect blend of countryside tranquility and accessibility to local amenities. It's a fantastic opportunity for those seeking a move-in-ready home that balances modern living with cozy charm.



Don't miss out on the chance to make this beautifully upgraded bungalow your new home. Contact us today to arrange a viewing and experience the exceptional quality and comfort this property has to offer.



Approximate Gross Internal Area = 96.8 sq m / 1042 sq ft

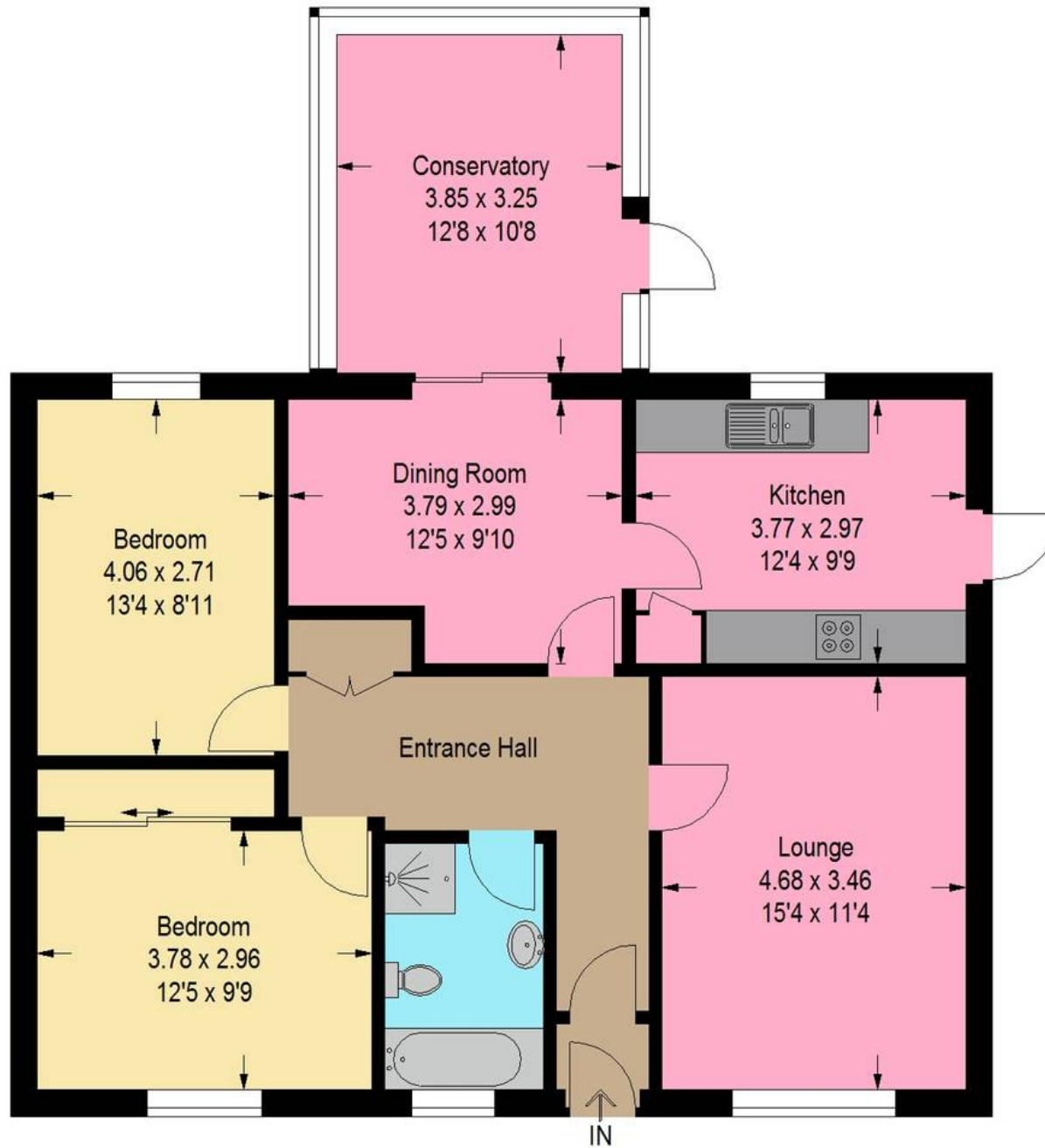


Illustration For Identification Purposes Only. Not To Scale (ID1110546 / Ref:88857)



## Bridges Properties

94 West Main Street, Whitburn - EH47 0QU

01501519435

[info@bridges-properties.co.uk](mailto:info@bridges-properties.co.uk)

[www.bridges-properties.co.uk/](http://www.bridges-properties.co.uk/)

