

11 Scarp, Isle of Scarp, HS3 3AZ

Offers in the region of £195,000



Ken Macdonald & Co, Solicitors & Estate Agents, 9 Kenneth Street, Stornoway, Isle of Lewis, HS1 2DP

Tel: 01851 704040 Email: enquiries@kenmacdonaldlawyers.co.uk Web:

www.kenmacdonaldproperties.co.uk



Description

Ken MacDonald & Co are excited to present to the market this traditional three-bedroom bungalow on the serene and secluded island of Scarp occupying a 1/4 acre plot. Constructed around 1950, the cottage exudes an authentic and old-world charm – truly unique in this modern day and age.

The mesmerising views are second to none, being surrounded by untouched grasslands, panoramic views of the rugged Harris landscape and the dreamy turquoise waters of Caolas an Scarp. The calming views are captured beautifully in every room through the cottage. The well-proportioned accommodation offers three bedrooms, kitchen, lounge, bathroom and porch.

The cottage benefits from UPVC double glazing and electricity is supplied through a wind generator and solar panels. Partially heated through radiators served by a solid fuel stove and there is also an open fire in the lounge providing additional comfort. Water is by way of a private supply and drainage is via septic tank.

Scarp became uninhabited around the 1970's and today, only 4 Dwellings are used as temporary residences. The island is only accessible by boat from the Huisinis jetty and gives an unparalleled experience, a stripped back and simple way of life.



Lounge



Bedroom 1



Bathroom





Bedroom 2



Bedroom 3

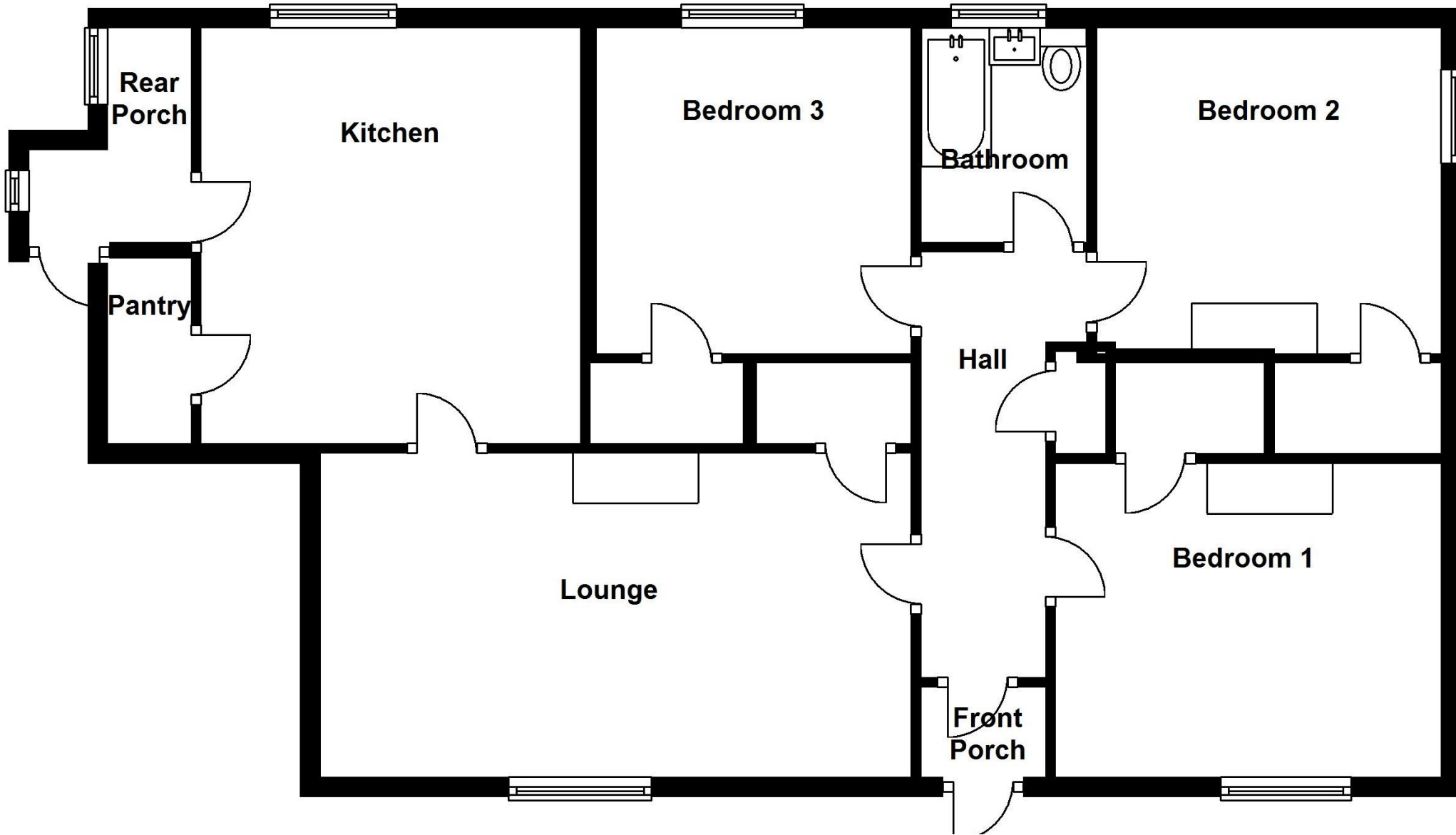






Views





Floorplan

Front Porch 1.24 (4'1") x 0.89 (2'11")

½ glazed hardwood door leading to hall. Panelled external wood door.

Hall 4.24 (13'11") x 2.00 (6'7")

Radiator. Doors to front porch, lounge, bedrooms, bathroom and storage cupboard. Vinyl flooring.

Bedroom 1 3.84m (12'7") x 3.12m (10'3")

UPVC double glazed window to front overlooking sea. Open fireplace with tiled surround and hearth. Built in wardrobe.

Bedroom 2 3.43m (11'3") x 3.24m (10'8")

UPVC double glazed window. Open fireplace with tiled surround and hearth. Built in wardrobe. Wood flooring.

Bathroom 2.13m (7') x 1.65m (5'5")

Frosted UPVC double glazed window. Three piece suite – bath, WC & WHB. Vinyl flooring.

Bedroom 3 3.24m (10'8") x 3.14m (10'4")

UPVC double glazed window. Wood flooring. Built in wardrobe.

Lounge 5.89m (19'4") x 3.22m (10'7")

UPVC double glazed window. Open fireplace with tiled hearth & wooden mantel. Vinyl flooring. Space for dining table. Storage cupboard.

Kitchen 4.14m (13'7") x 3.77m (12'5")

UPVC double glazed window. Door to rear porch and pantry. Fitted floor units. Tiled to splashback. Vinyl flooring. Stainless steel sink. Space for cooker.

Pantry 1.85m (6'1") x 0.83m (2'9")

Fitted shelves. UPVC double glazed window. Vinyl flooring.

Rear Porch

Two UPVC double glazed windows. External door. ½ glazed external wood door.