



29a, Edinburgh Road, Harthill

Harthill

Offers Over **£400,000**



29a, Edinburgh Road, Harthill

Harthill

Offers Over **£400,000**



29a, Edinburgh Road

, Harthill

This unique property presents an exciting development opportunity centered around a former church building. The western portion has already been thoughtfully converted into a spacious residential home, offering a glimpse of the site's potential. This existing residence boasts a generous layout spread across two floors, featuring a large kitchen and dining area, multiple bedrooms, bathrooms, a dressing room, and ample storage space.

The unconverted portion of the church and the expansive surrounding land, totaling just over an acre, open up a world of possibilities for further development. Prospective buyers could explore options such as converting the remaining church structure into stylish apartments, constructing modern townhouses, expanding the existing home, or creating an innovative mixed-use development.



With over half an acre of land at your disposal, there's significant room for new construction, landscaping, or outdoor amenities. The property's rich history as a church adds a unique character that could be seamlessly incorporated into creative design concepts, setting this development apart from typical residential projects.

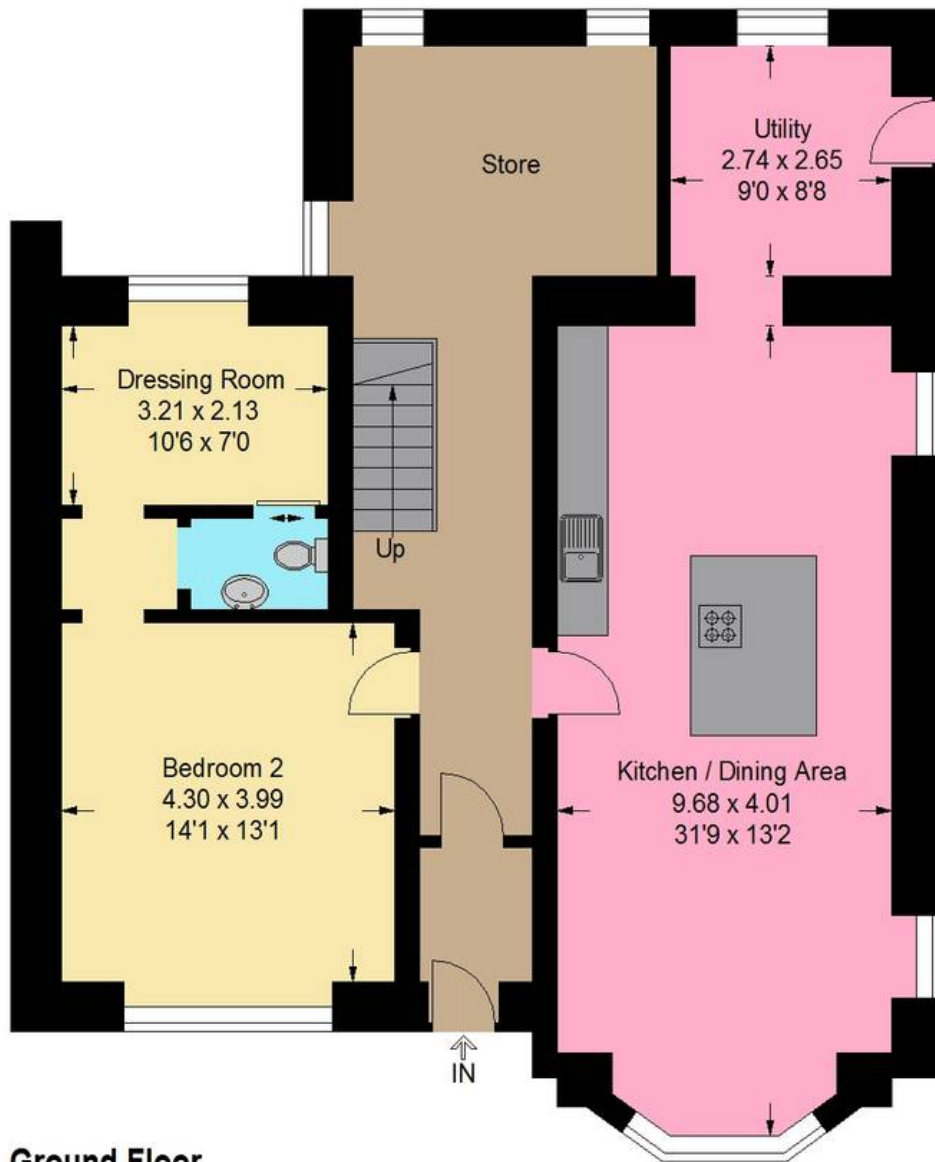
This unlisted gem offers the rare chance to acquire a partially converted historic building with substantial untapped potential. Whether you're envisioning a collection of bespoke homes, a community-focused development, or a grand private residence, this property provides the canvas to bring your vision to life. The combination of existing living space, unconverted church structure, and generous land parcel makes this an appetizing prospect for developers, investors, or those seeking a one-of-a-kind family home with room to grow.

Situated in a desirable location, this property represents a unique opportunity to own a piece of local history while shaping its future. The possibilities are limited only by your imagination, making this an unmissable chance to create something truly special in the heart of the community.

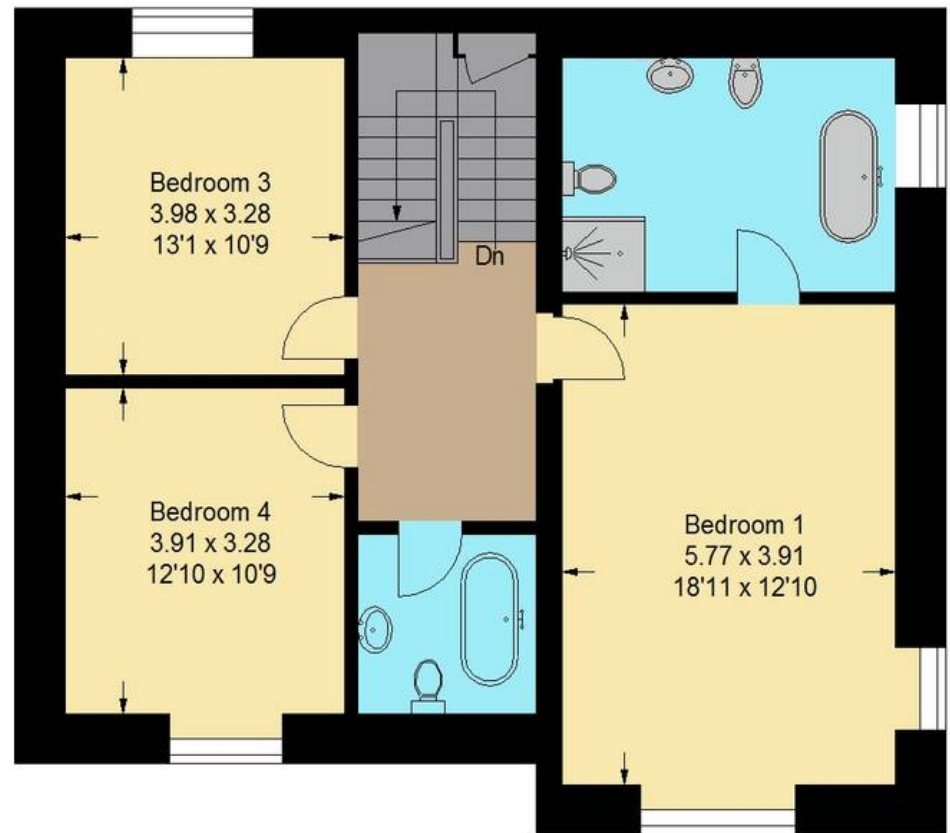




Approximate Gross Internal Area = 192.5 sq m / 2072 sq ft



Ground Floor



First Floor

Illustration For Identification Purposes Only. Not To Scale (ID1109524 / Ref:88815)



Bridges Properties

94 West Main Street, Whitburn - EH47 0QU

01501519435

info@bridges-properties.co.uk

www.bridges-properties.co.uk/





Bridges Properties

94 West Main Street, Whitburn - EH47 0QU

01501519435

info@bridges-properties.co.uk

www.bridges-properties.co.uk/

