



17 Vicars Hall Gardens, Worsley

In Excess of £650,000

17 Vicars Hall Gardens

Worsley, Manchester

Millbrooke Estate Agents are delighted to offer for sale this incredible four bedroom residence with additional annexe located on the highly popular Vicars Hall Gardens. This exceptional detached home offers unique and charming living space on the grandest of scales!

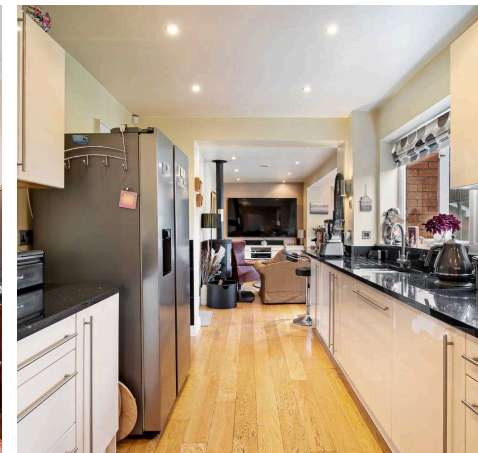
Council Tax band: E

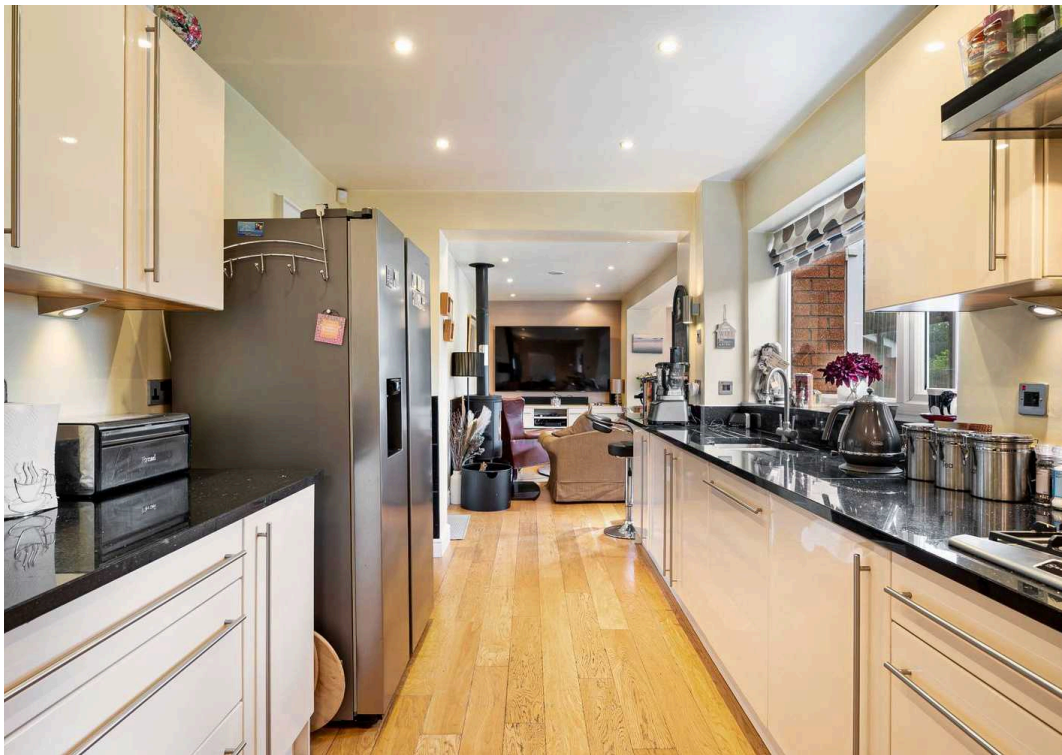
Tenure: Leasehold

EPC Energy Efficiency Rating: C

EPC Environmental Impact Rating: D

- Excellent transport links
- High specification kitchen
- Three reception rooms
- Garden with brook running through
- Double garage
- Finished to a high standard
- Prime Boothstown location
- Log burning stove
- Annex to the side elevation



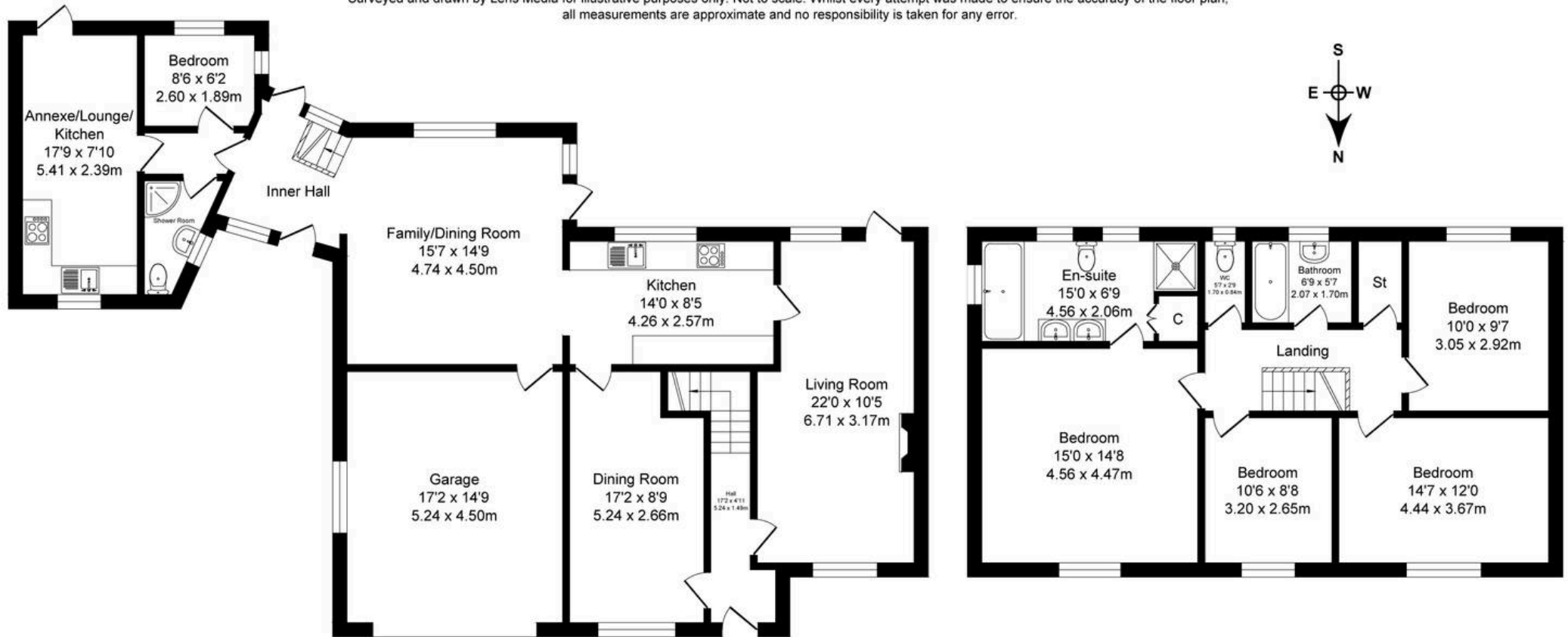




Vicars Hall Gardens, Boothstown

Total Approx. Floor Area 2246 Sq.ft. (208.7 Sq.M.)

Surveyed and drawn by Lens Media for illustrative purposes only. Not to scale. Whilst every attempt was made to ensure the accuracy of the floor plan, all measurements are approximate and no responsibility is taken for any error.



Ground Floor
 Approx. Floor Area 1392 Sq.Ft
 (129.3 Sq.M.)

First Floor
 Approx. Floor Area 855 Sq.Ft
 (79.4 Sq.M.)



Millbrooke Estate Agents

271 Mosley Common Road, Worsley, Manchester - M28 1BZ

0161 790 5154 • hello@millbrooke.co • millbrooke.co

