



Millbrooke  
ESTATE AGENTS

The Hayloft Lower New Row, Worsley

In Excess of £699,950

# The Hayloft Lower New Row

Worsley, Manchester

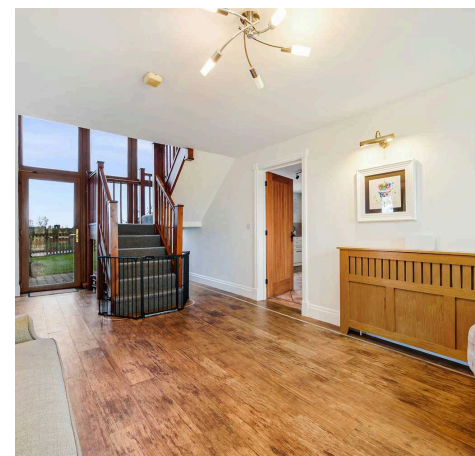
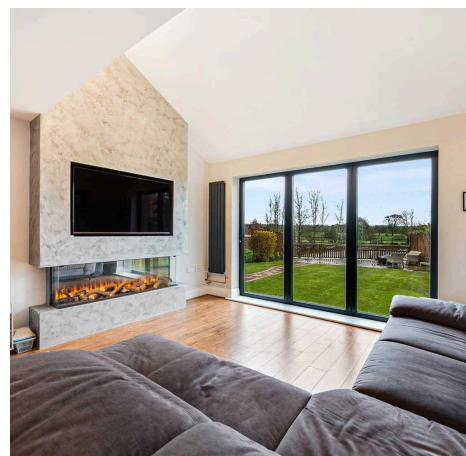
Millbrooke Estate Agents are proud to offer for sale this individually designed, prestigious barn conversion. Perfectly situated surrounded by incredible open views yet close to local amenities, this beautiful property seamlessly combines the appeal of countryside living with urban accessibility. Council Tax band: F

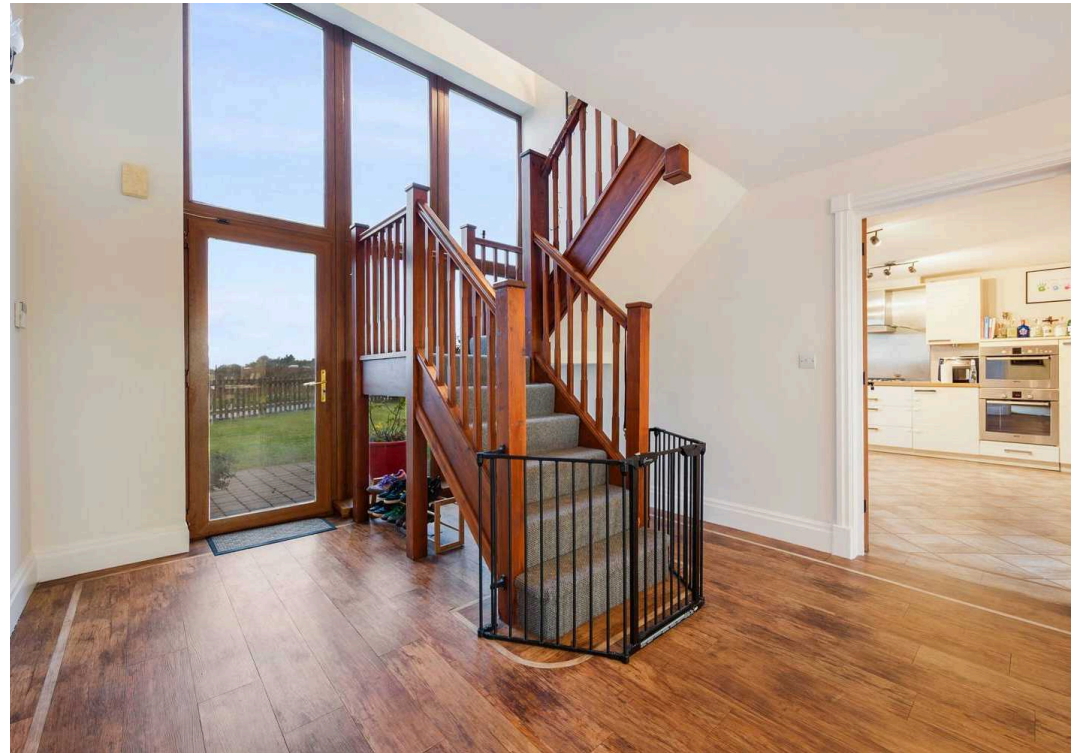
Tenure: Leasehold

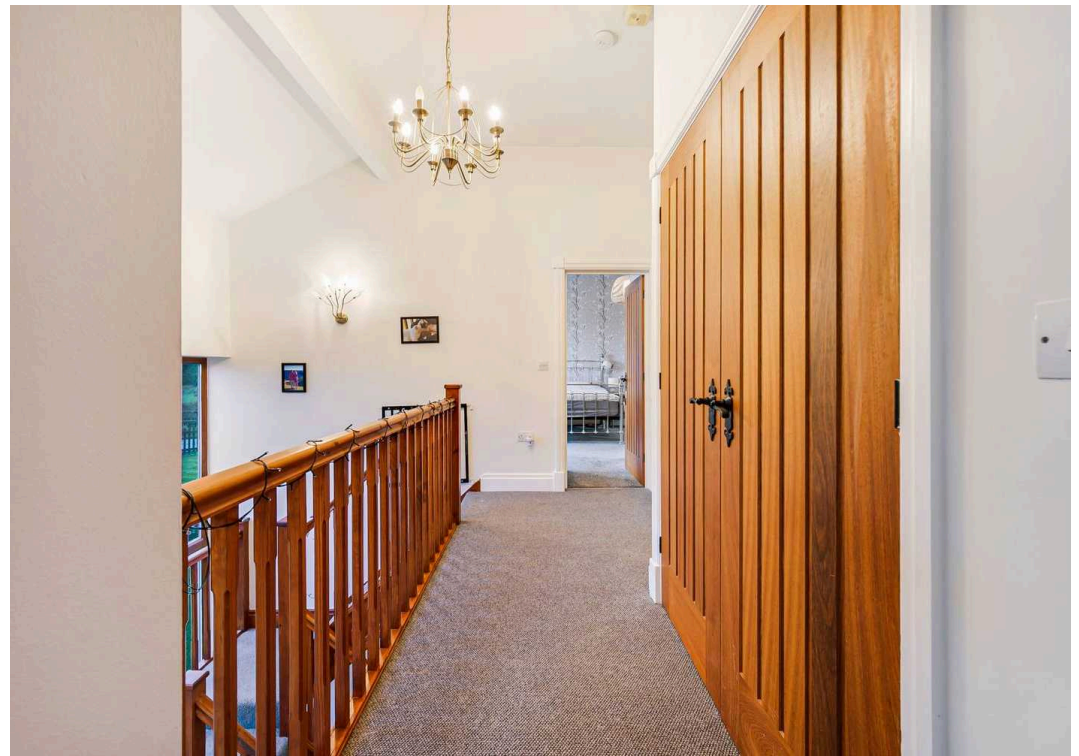
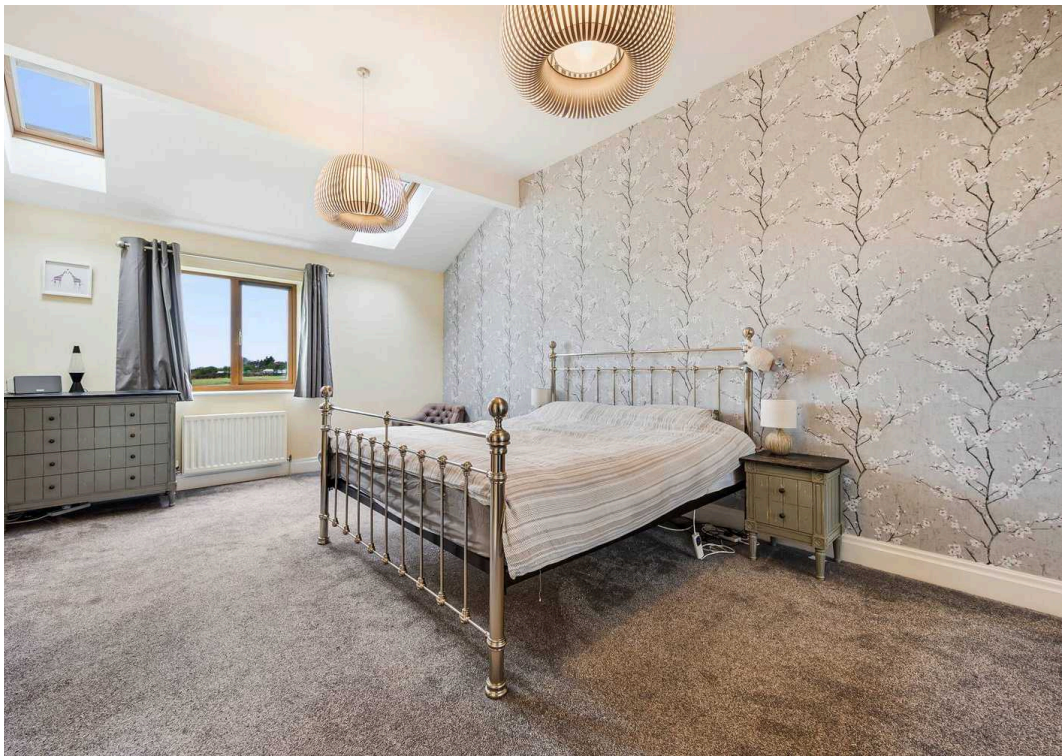
EPC Energy Efficiency Rating: D

EPC Environmental Impact Rating: C

- Shops and amenities nearby
- Stunning panoramic views
- Stylish kitchen
- 3 Reception Rooms
- Lots of character
- Finished to an exceptional standard
- Master bedroom with en-suite
- Gated driveway and double garage
- Attached Barn Conversion



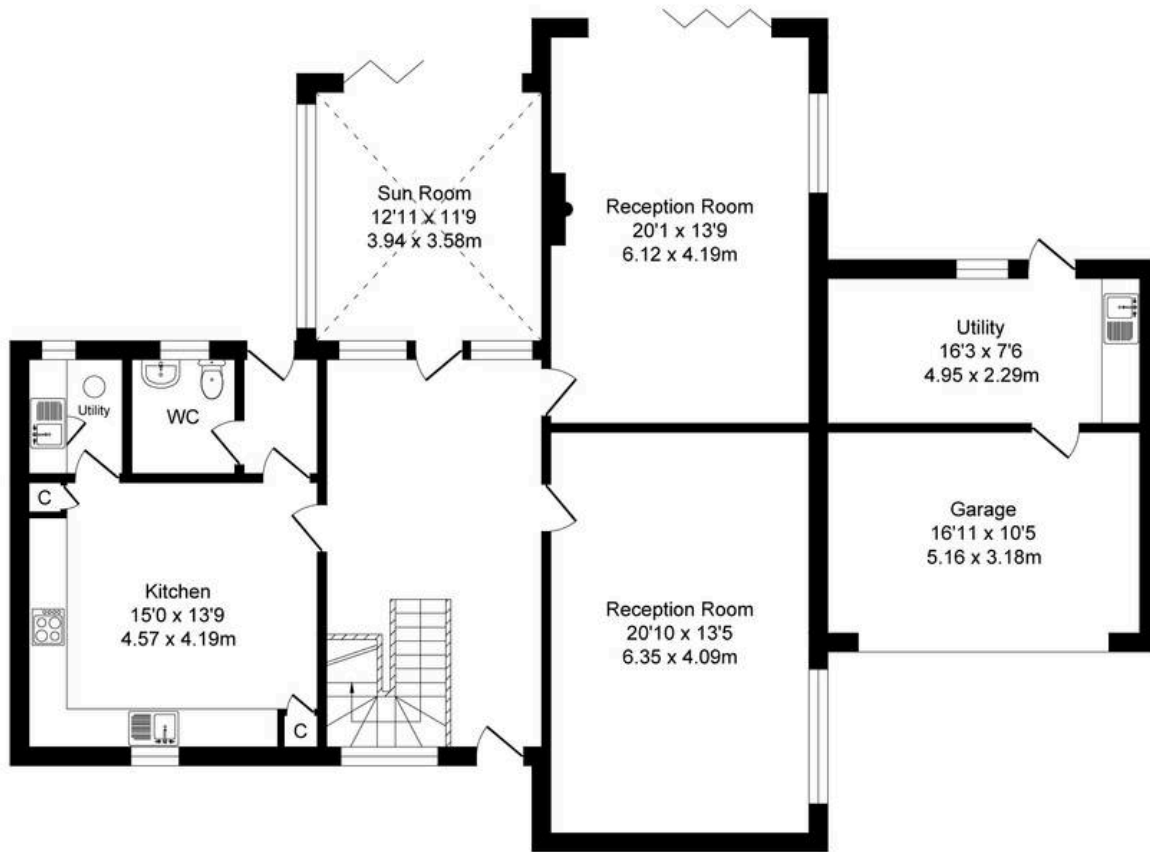
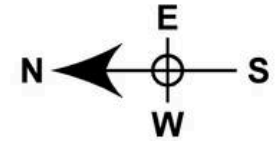




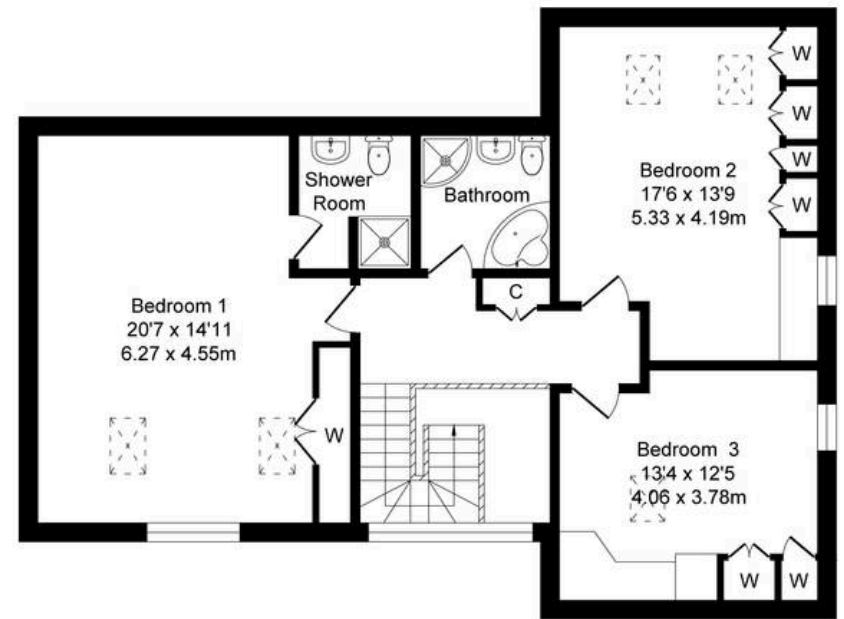
# Lower New Row, Worsley

Total Approx. Floor Area 2537 Sq.ft. (235.7 Sq.M.)

Surveyed and drawn by Lens Media for illustrative purposes only. Not to scale. Whilst every attempt was made to ensure the accuracy of the floor plan, all measurements are approximate and no responsibility is taken for any error.



Ground Floor  
Approx. Floor Area 1590 Sq.Ft (147.7 Sq.M.)



First Floor  
Approx. Floor Area 947 Sq.Ft (88.0 Sq.M.)



## Millbrooke Estate Agents

271 Mosley Common Road, Worsley, Manchester - M28 1BZ

0161 790 5154 • [hello@millbrooke.co](mailto:hello@millbrooke.co) • [millbrooke.co](http://millbrooke.co)

