



Millbrooke
ESTATE AGENTS

14 Rands Clough Drive, Worsley

Offers in Region of **£325,000**

14 Rands Clough Drive

Worsley, Manchester

Millbrooke Estate Agents are delighted to offer for sale this well-presented spacious, three bedroom semi detached property situated on a quiet cul-de-sac in Boothstown. The property is offered with the benefit of no onward chain!

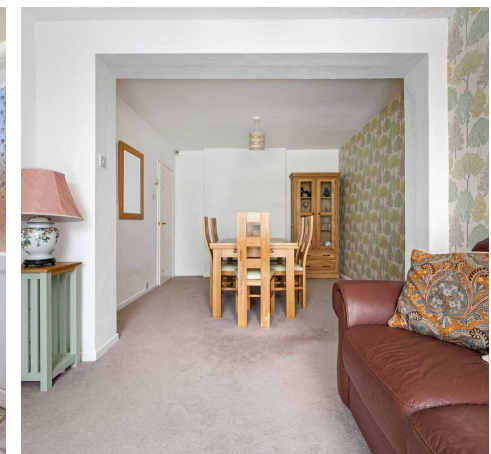
Council Tax band: D

Tenure: Leasehold

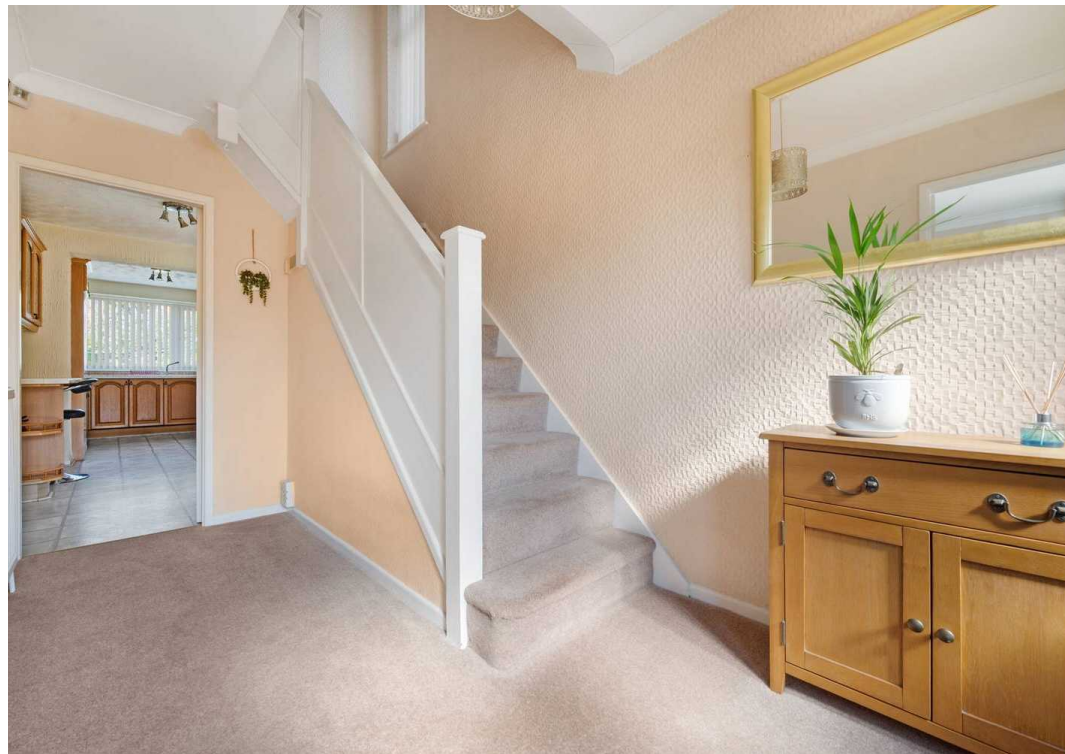
EPC Energy Efficiency Rating: D

EPC Environmental Impact Rating: E

- Shops and amenities nearby
- Cul-de-sac location
- Excellent transport links
- Private garden to the rear
- Very spacious property
- Fitted Wardrobes
- No onward chain!
- Large driveway and single garage



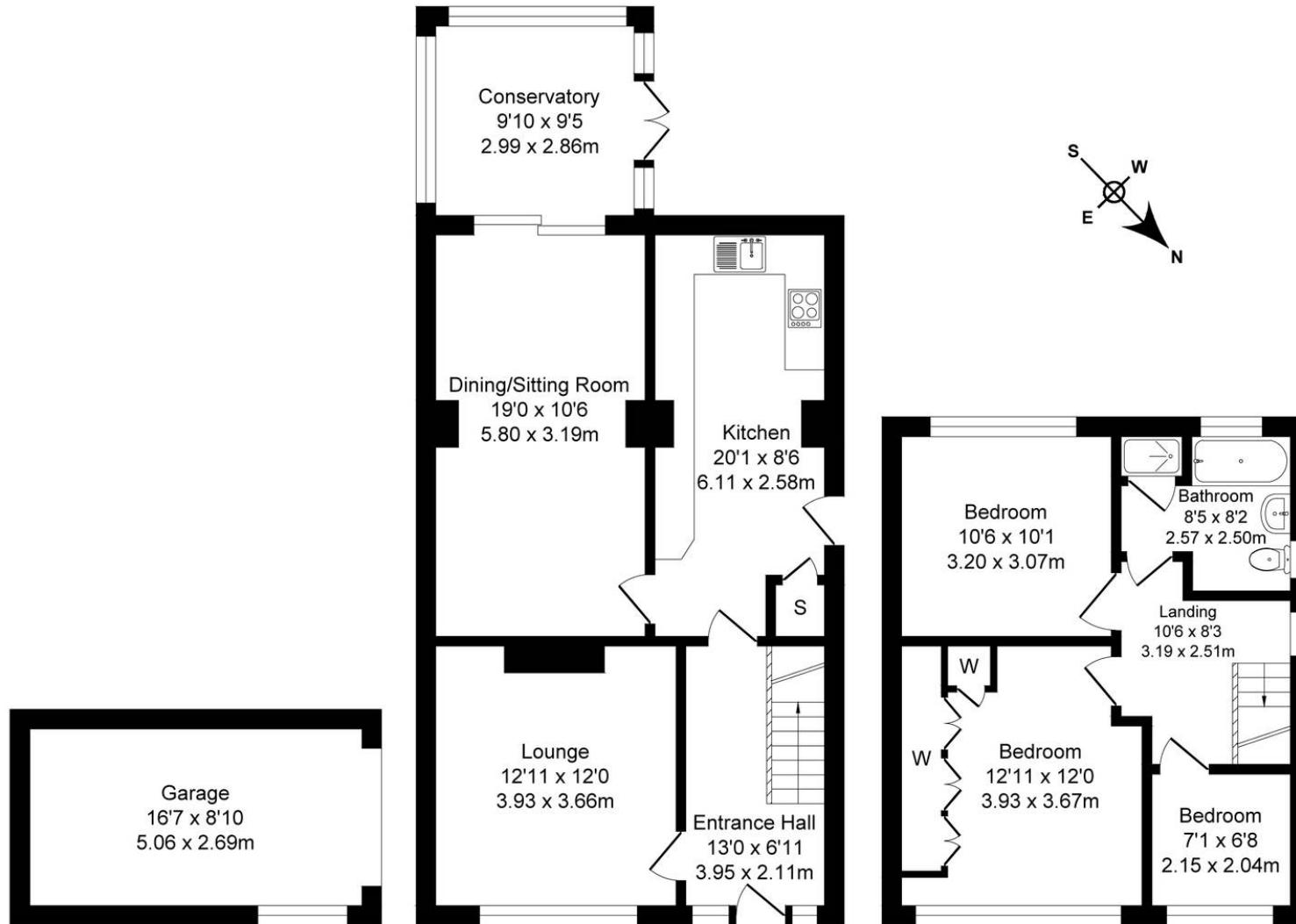




Rands Clough Drive, Boothstown

Total Approx. Floor Area 1353 Sq.ft. (125.8 Sq.M.)

Surveyed and drawn by Lens Media for illustrative purposes only. Not to scale. Whilst every attempt was made to ensure the accuracy of the floor plan, all measurements are approximate and no responsibility is taken for any error.



Garage

Approx. Floor Area 146 Sq.Ft (13.6 Sq.M.)

Ground Floor

Approx. Floor Area 753 Sq.Ft (70.0 Sq.M.)

First Floor

Approx. Floor Area 454 Sq.Ft (42.2 Sq.M.)



Millbrooke Estate Agents

271 Mosley Common Road, Worsley, Manchester - M28 1BZ

0161 790 5154 • hello@millbrooke.co • millbrooke.co

