



7 Barnfield Drive, Worsley

Fixed Price **£250,000**

7 Barnfield Drive

Worsley, Manchester

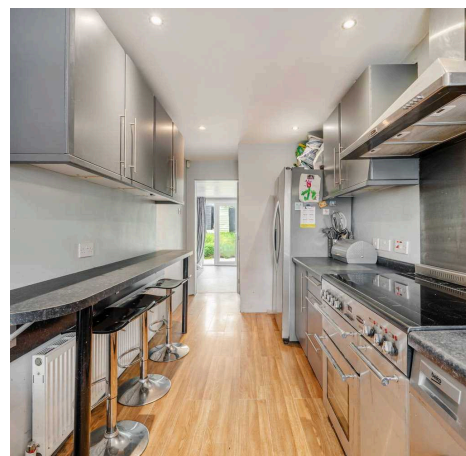
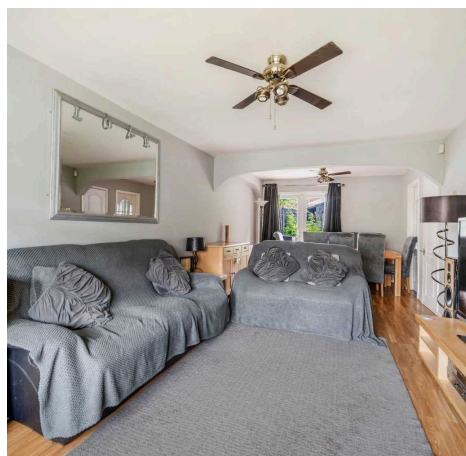
Millbrooke Estate Agents are delighted to offer for sale this spacious, semi-detached property on Barnfield Drive, Boothstown. This extended property boasts two large reception rooms, three bedrooms and a converted loft room. Furthermore, it is offered complete with the freehold and no onward chain! Council Tax band: B

Tenure: Freehold

EPC Energy Efficiency Rating: C

EPC Environmental Impact Rating:

- Shops and amenities nearby
- Spacious lounge
- Cul-de-sac location
- Excellent transport links
- Gas central heating (combi boiler)
- Private garden to the rear
- Three double bedrooms
- No Chain
- Freehold Property



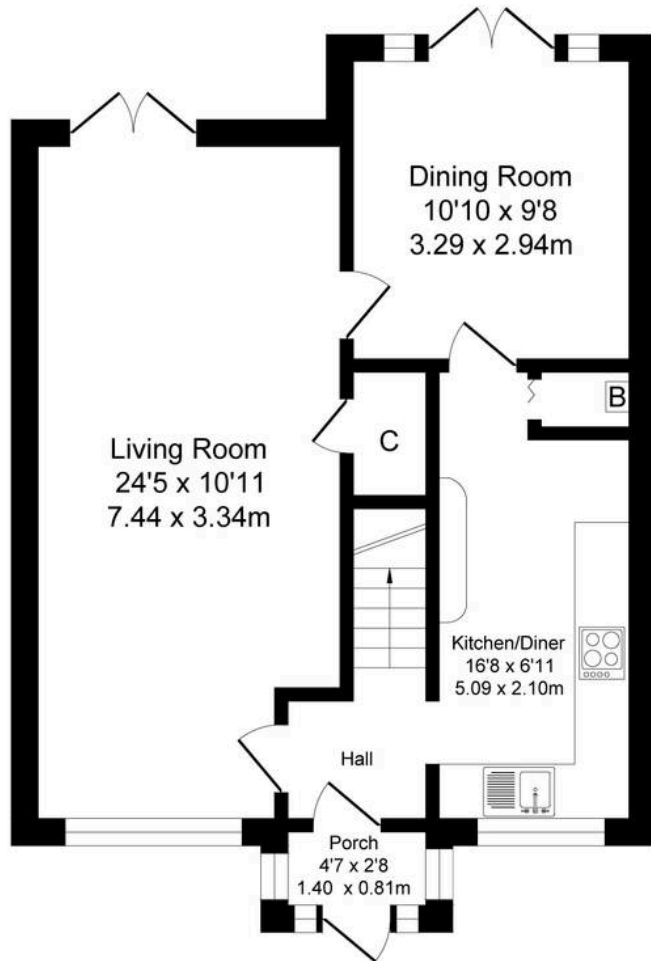




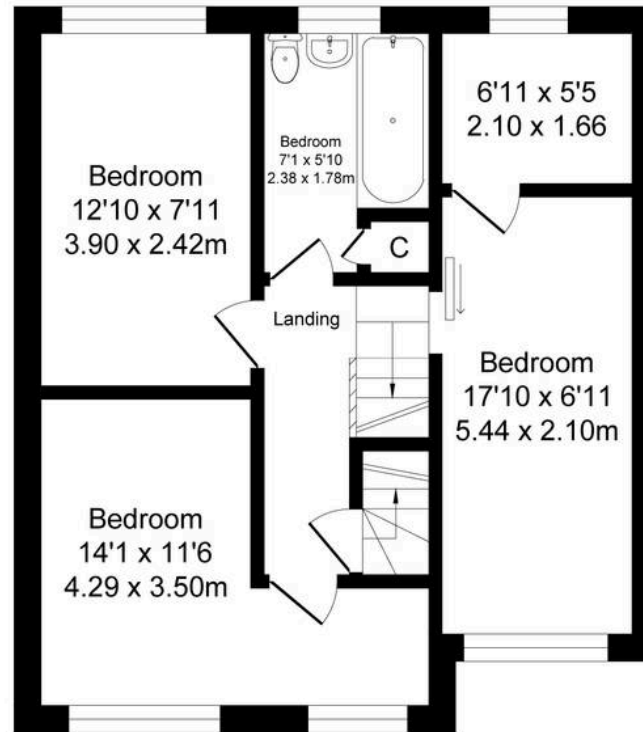
Barnfield Drive, Manchester

Total Approx. Floor Area 1343 Sq.ft. (124.8 Sq.M.)

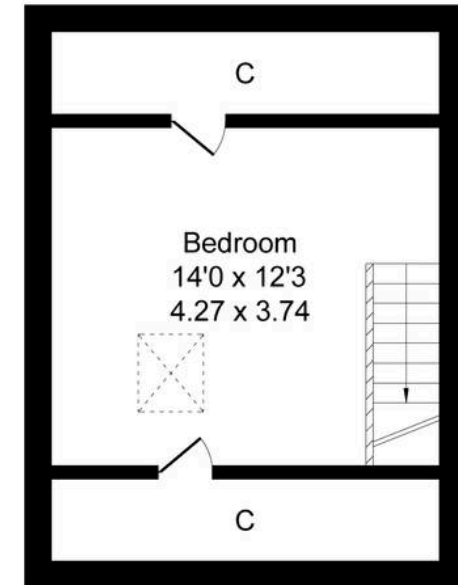
Surveyed and drawn by Lens Media for illustrative purposes only. Not to scale. Whilst every attempt was made to ensure the accuracy of the floor plan, all measurements are approximate and no responsibility is taken for any error.



Ground Floor
Approx. Floor Area 569 Sq.Ft (52.9 Sq.M.)



First Floor
Approx. Floor Area 504 Sq.Ft (46.8 Sq.M.)



Second Floor
Approx. Floor Area 270 Sq.Ft (25.1 Sq.M.)



Millbrooke Estate Agents

271 Mosley Common Road, Worsley, Manchester - M28 1BZ

0161 790 5154 • hello@millbrooke.co • millbrooke.co

