



Elliot Heath
ESTATE AGENTS

10 Sutton Court Crane Mead, Ware

Guide Price **£330,000**

10 Sutton Court Crane Mead

Ware, Ware

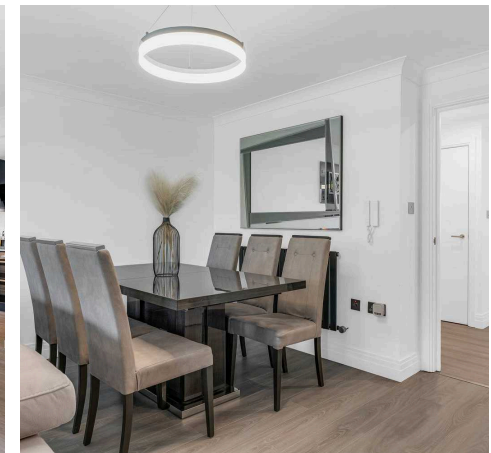
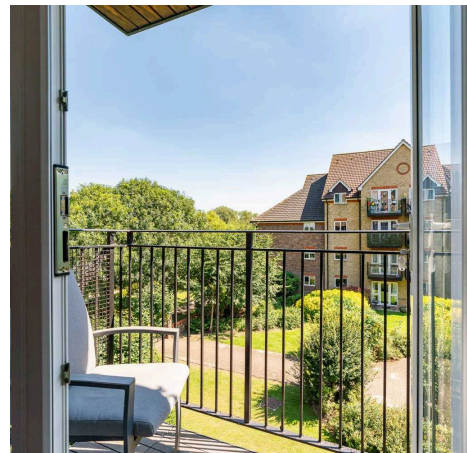
BEING OFFERED WITH NO ONWARD CHAIN.... Stunning riverside apartment in sought-after development, private balcony with river views. Refurbished to high standard, featuring bespoke kitchen, luxury bathrooms, fitted shutters, upgraded heating, and allocated parking. Close to Ware station and amenities.

Council Tax band: D

Tenure: Leasehold

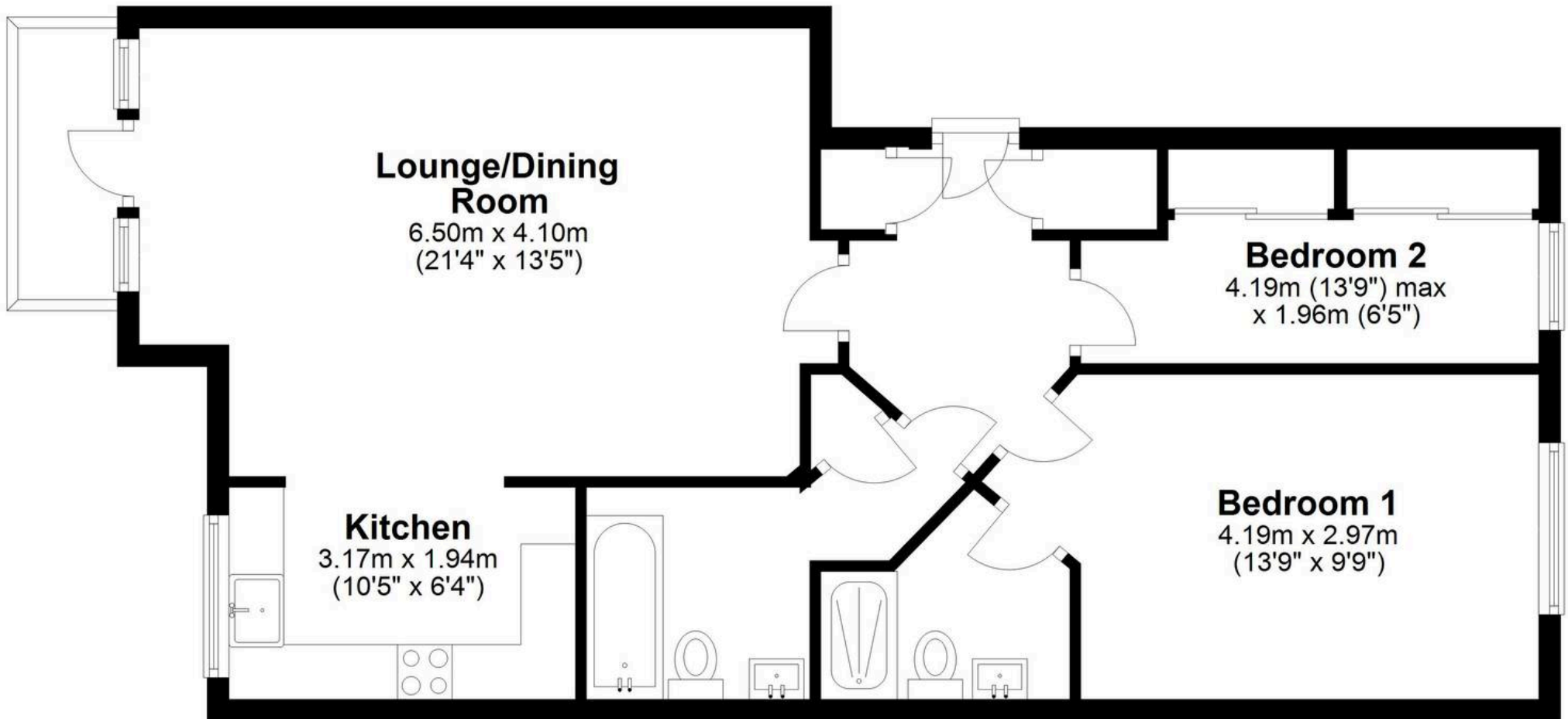
EPC Energy Efficiency Rating: B

EPC Environmental Impact Rating: C



Second Floor

Approx. 72.3 sq. metres (778.1 sq. feet)



Total area: approx. 72.3 sq. metres (778.1 sq. feet)

FOR ILLUSTRATIVE PURPOSES ONLY. NOT TO SCALE

Whilst every attempt has been made to ensure the accuracy of the floor plan shown, all measurements, positioning, fixtures, features, fittings and any other data shown are an approximate interpretation for illustrative purposes only and are not to scale. No responsibility is taken for any error, omission, miss-statement or use of data shown.

Property marketing provided by www.matthewkyle.co.uk

Accommodation

Communal front entrance door with entry phone system to:

Communal Entrance Hall

With stairs rising to the first floor, private front entrance door to:

Entrance Hall

With wood effect flooring, vertical radiator, airing cupboard housing pre-lagged cylinder, additional meter and storage cupboard, doors to:

Lounge/Dining Room

21' 4" x 13' 5" (6.50m x 4.10m)

With full height double glazed windows and door opening to the balcony with space for a small table and chairs overlooking the communal gardens and River Lea, wood effect flooring, entryphone system, radiator, open to:

Refitted Kitchen

10' 5" x 6' 4" (3.17m x 1.94m)

With double glazed window over looking the communal gardens. Fitted with a bespoke range of wall and base storage units with Quartz work surfaces over incorporating a sink and drainer unit, integrated appliances, wood effect flooring.

Bedroom One

13' 9" x 9' 9" (4.19m x 2.97m)

With full height double glazed window with fitted shutters, radiator. Door to:

Refitted En Suite Shower Room

Fitted with a suite comprising large fully tiled shower cubicle, vanity unit with inset wash hand basin, dual flush wc, heated towel rail, fully tiled.



Bedroom Two

13' 9" x 6' 5" (4.19m x 1.96m)

With double glazed window with fitted shutters, radiator, fitted wardrobe cupboards with mirrored sliding doors, wood effect flooring.

Refitted Bathroom

Fitted with a suite comprising tile enclosed bath with shower over and glass shower screen, concealed cistern wc, vanity unit with inset wash hand basin, fully tiled, heated towel rail.





GARDEN

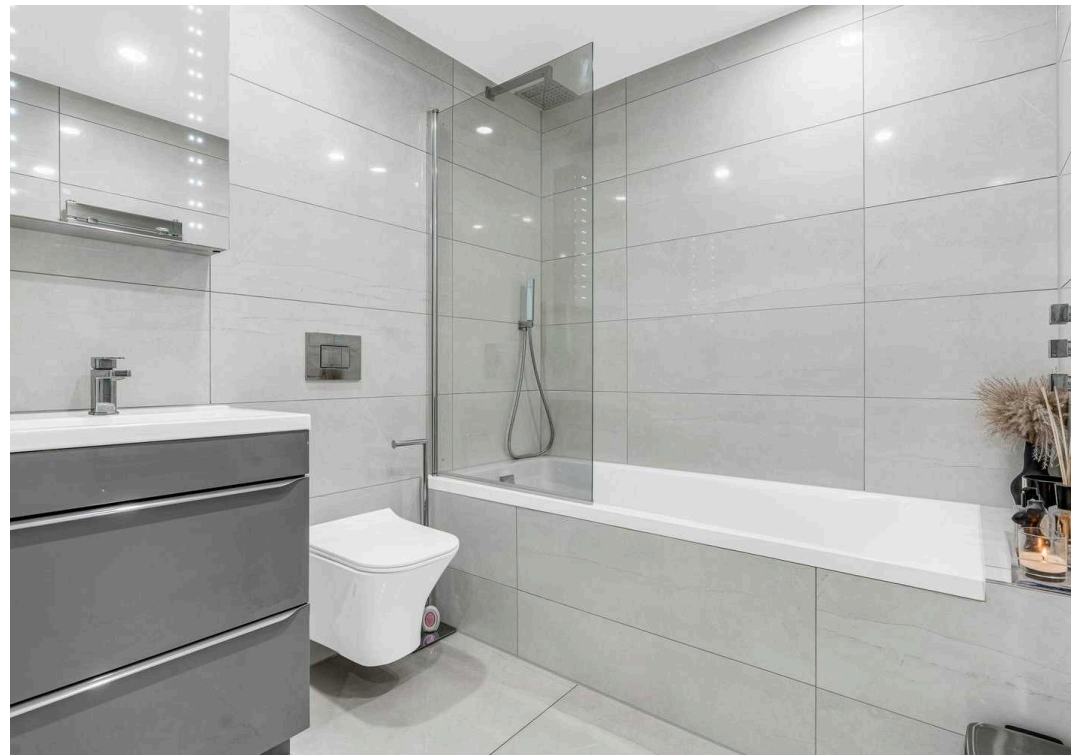
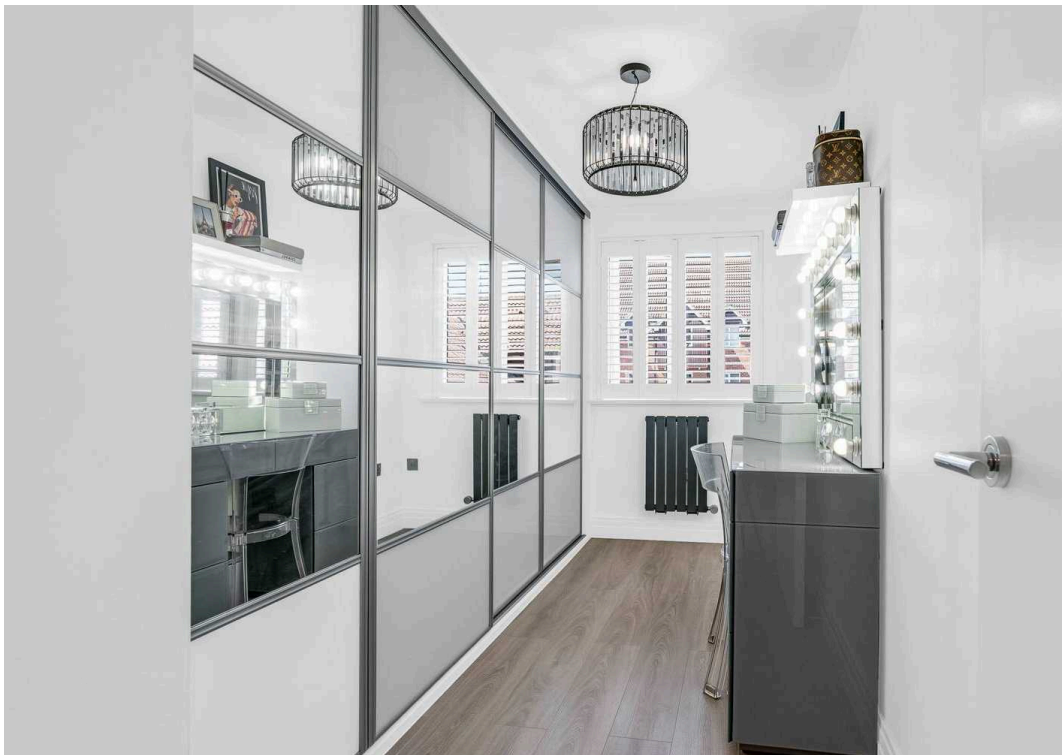
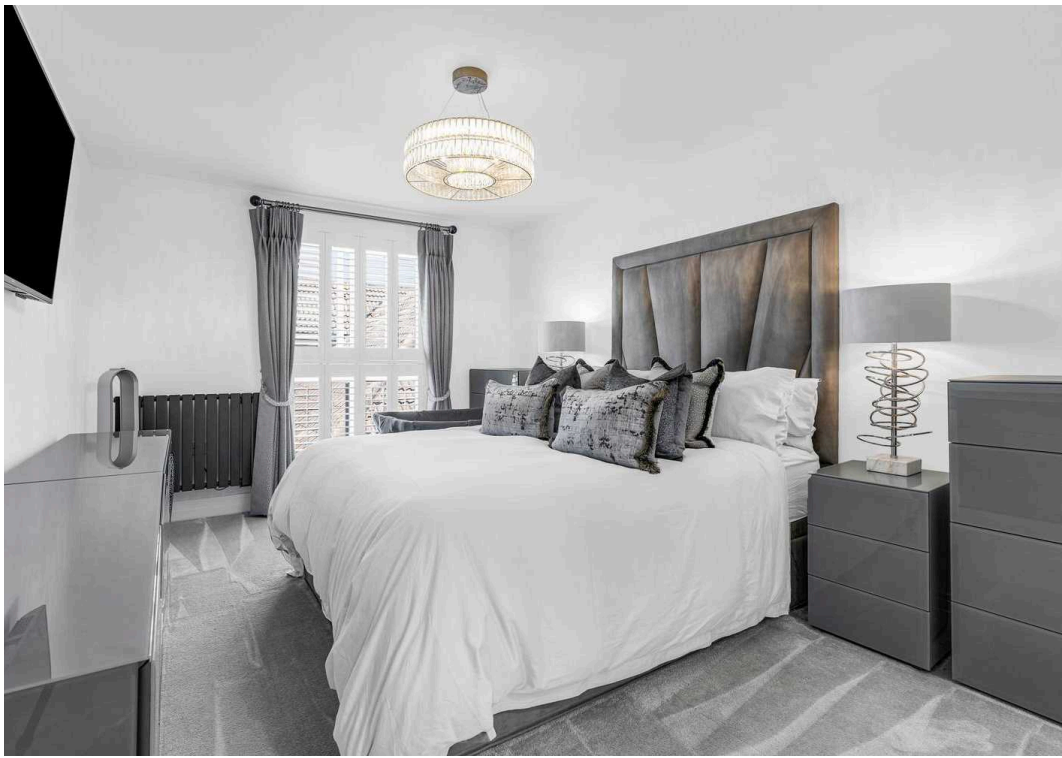
Private balcony and well established communal gardens with gated access out to the River Lea towpath.

ALLOCATED PARKING

1 Parking Space

Allocated parking for one vehicle plus visitors parking close by.







Elliot Heath Estate Agents

Elliot Heath Estate Agents, 7 Star Street - SG12 7AA

01920 29 33 33

hello@elliotheath.co.uk

elliotheath.co.uk