



139 Purves Road, Kensal Rise

London

£6,500 pcm



139 Purves Road

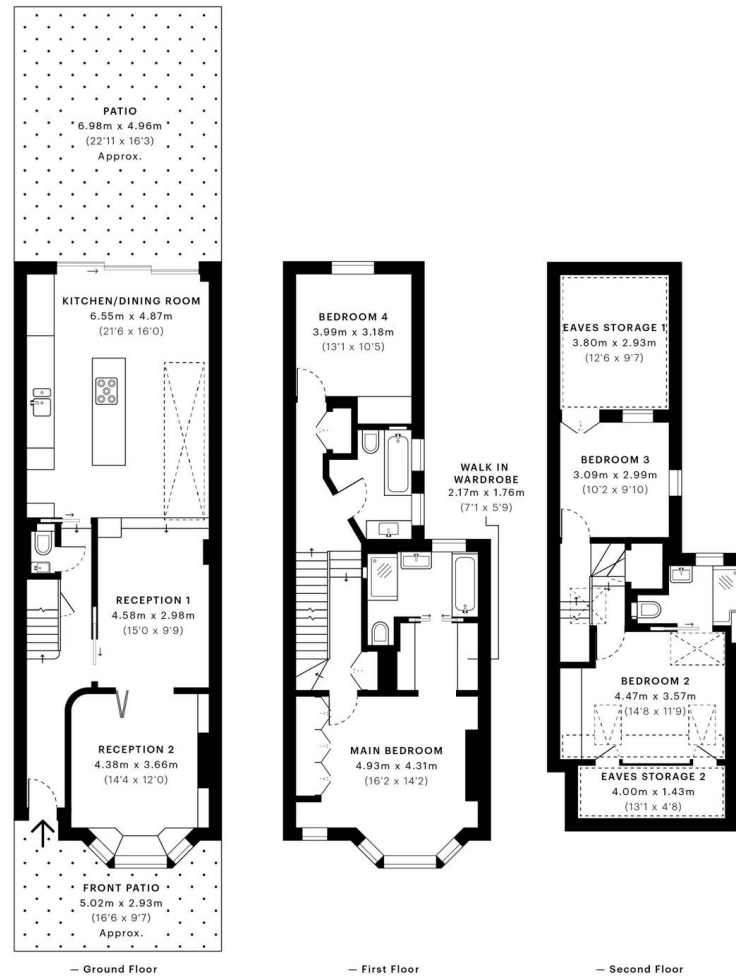
Kensal Rise, London

Stunning 4 bed / 3 bath house with south facing garden

Council Tax band: E

Tenure: Freehold





GROSS INTERNAL AREA (GIA)
The footprint of the property
188.31 sqm / 2026.95 sqft

NET INTERNAL AREA (NIA)
Excludes walls and external features
Includes washrooms, restricted head height
172.82 sqm / 1860.22 sqft

EXTERNAL STRUCTURAL FEATURES
Balconies, terraces, verandas etc.
0.00 sqm / 0.00 sqft

RESTRICTED HEAD HEIGHT
Limited use area under 1.5 m
19.58 sqm / 210.76 sqft



Spec Verified floor plans are produced in accordance with Royal Institution of Chartered Surveyors' Property Measurement Standards. Plots and gardens are illustrative only and excluded from all area calculations. Due to rounding, numbers may not add up precisely. All measurements shown for the individual room lengths and widths are the maximum points of measurements captured in the scan.

IPMS 3B RESIDENTIAL 182.92 sqm / 1968.93 sqft
IPMS 3C RESIDENTIAL 173.30 sqm / 1865.39 sqft

SPEC ID 5fa945015d959f0dc31abc33



Garrison Estates

20 College Parade, Salusbury Road, Queens Park - NW6 6RN

020 4511 4820 • contact@garrisonestates.co.uk • www.garrisonestates.co.uk/