



3 Bedrooms



2 Bath/Shower Room + WC



2 Reception Rooms



On Street Parking



Private Garden



EPC Band C

Council Tax

Band D

- £2,229.54 24/25

Local Authority

St Albans District Council

 **ashtons**  
for life's great moves

**Salisbury Road, Harpenden, Hertfordshire, AL5**  
**Asking Price £565,000.00 Freehold**

## Salisbury Road, Harpenden, Hertfordshire, AL5

A handsome bay fronted Victorian mid-terrace three bedroom family home with generous accomodation located close to excellent schooling.

- 🏡 Handsome Victorian Cottage
- 🏡 Three Bedrooms
- 🏡 Family Bathroom
- 🏡 En-suite Shower Room
- 🏡 Catchment for excellent schooling
- 🏡 Close to open countryside
- 🏡 Vacant

### Description

Welcome to this charming three-bedroom Victorian bay-fronted terraced cottage, a perfect blend of historical charm and modern living. This delightful home retains much of its period character, offering spacious accommodation on the ground floor. You'll find a beautiful front sitting room that seamlessly flows into an open-plan, fully fitted kitchen with ample dining space, perfect for entertaining family and friends. Step outside to the secluded and sunny rear gardens, ideal for relaxing and outdoor gatherings, complemented by a patio area.

Upstairs, there are two generously sized bedrooms and a well-appointed first-floor bathroom. The top floor has been thoughtfully extended to include an additional bedroom with the added luxury of an ensuite shower room.

This home offers a warm and inviting atmosphere, making it an ideal choice for those seeking a blend of classic elegance and contemporary comfort.

### Location

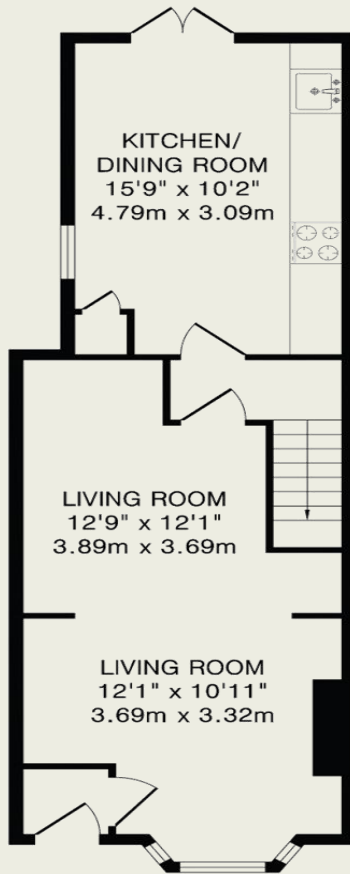
Salisbury Road is a highly sought-after street in East Harpenden, featuring a diverse array of housing styles. Residents enjoy the convenience of local shops, gastro pubs, and takeaways, all just a five-minute walk away. The newly established Katherine Warrington School is located at the end of the road. Additionally, the nearby Lea Valley Nature Reserve offers natural beauty, while Harpenden town and the mainline station, which provides a 30-minute commute to central London, are about a mile away.



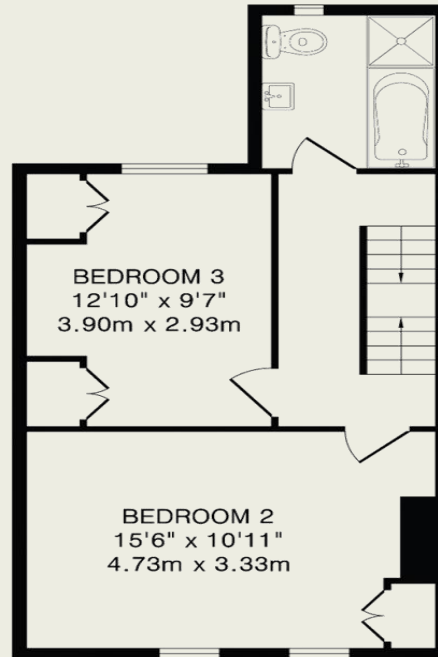


**Important Information**

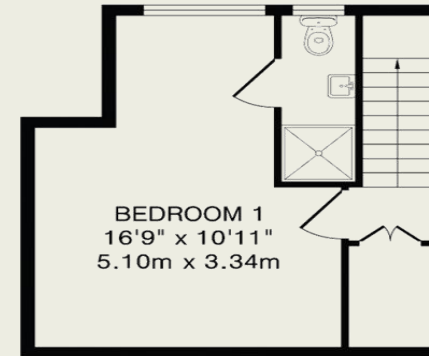
These particulars do not constitute an offer or contract in whole or part. The statements contained herein are made without responsibility on the part of Ashtons or the vendors and they cannot be relied upon as representatives of fact. In respect of floor plans, these are for illustrative purposes only. The measurement and position of each element is approximate and must be viewed as such. Intending purchasers should therefore satisfy themselves by inspection or otherwise as to their correctness. The vendors do not make or give, and neither Ashtons nor any person in their employment has any authority to make or give, any representation or warranty whatsoever in relation to this property. We offer a wide range of services through third party providers including solicitors, surveyors, removal firms, mortgage providers and EPC suppliers. We receive additional payments for administering suppliers quoting software and making referrals. You are not under any obligations to use these services and it is your discretion whether you choose to deal with these parties or your own preferred supplier. You should be aware the average payment we received in 2021 equated to £48.36 per referral.



Ground Floor  
458 sq.ft.(42.5 sq.m)approx.



First Floor  
424 sq.ft.(39.3 sq.m)approx.



Second Floor  
235 sq.ft.(21.7 sq.m)approx.

TOTAL FLOOR AREA: 1117 sq.ft.(103.5 sq.m)approx.

This floor plan is for illustration purposes only. The measurements and position of each element are approximate and must be viewed as such.