



  
**Reynolds Salter**  
Estate Agents

Middle Street, Nazeing, Essex

  
**Reynolds Salter**  
Estate Agents





A Stunning Four Double Bedroom Eco-Friendly, Energy Efficient Country House built in 2019, superbly appointed in a private location off Middle Street in Nazeing, standing in magnificent grounds approaching 6 ACRES. This outstanding family home still has 5 years remaining on it's New Home Building Warranty and offers in excess of 2200 sq ft of luxury accommodation presented to an exceptionally high standard specification throughout. This sumptuous house is approached via a security gated entrance which leads onto an extensive parking area at the front of the property. The gardens/grounds are mainly laid to lawn surrounded by various mature trees and bushes which help give a high degree of privacy. A gate at the rear of the garden leads into a 5.4 ACRE paddock/field, which offers fantastic potential for an Equestrian Enthusiast. Nazeing is a popular village providing a number of shops, a highly regarded primary school, and a friendly local public house. Broxbourne Mainline Railway Station with its fast and frequent service into London Liverpool Street is approximately 2 miles.

- **Four Bedroom Country House**
- **Ideal For Equestrian Enthusiast**
- **Plot Approaching 6 Acres**
- **High Specification Finish**
- **Private Location/Gated Entrance**
- **Chain Free**

**EPC - B**

The logo for Reynolds Salter Estate Agents features a stylized yellow house silhouette above the company name in a bold, black serif font. Below the name, the words 'Estate Agents' are written in a smaller, black sans-serif font.

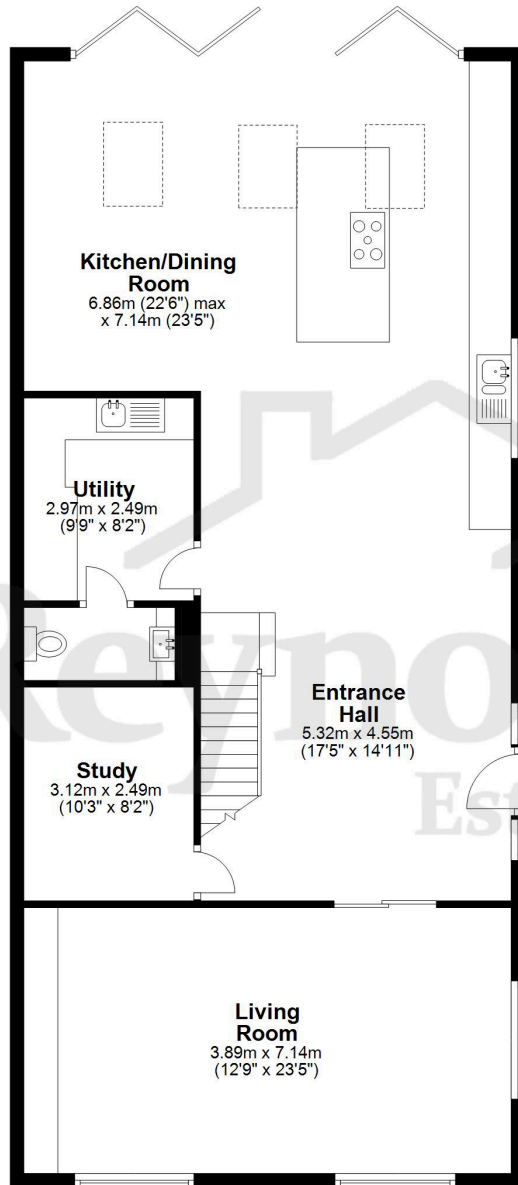
**Reynolds Salter**  
Estate Agents

25a High Road, Broxbourne,  
Herts, EN10 7HX  
[www.reynoldssalter.co.uk](http://www.reynoldssalter.co.uk)

**01992 449000**

### Ground Floor

Approx. 116.1 sq. metres (1249.2 sq. feet)



#### Kitchen/Dining Room

6.86m (22'6") max  
x 7.14m (23'5")

#### Utility

2.97m x 2.49m  
(9'9" x 8'2")

#### Entrance Hall

5.32m x 4.55m  
(17'5" x 14'11")

#### Study

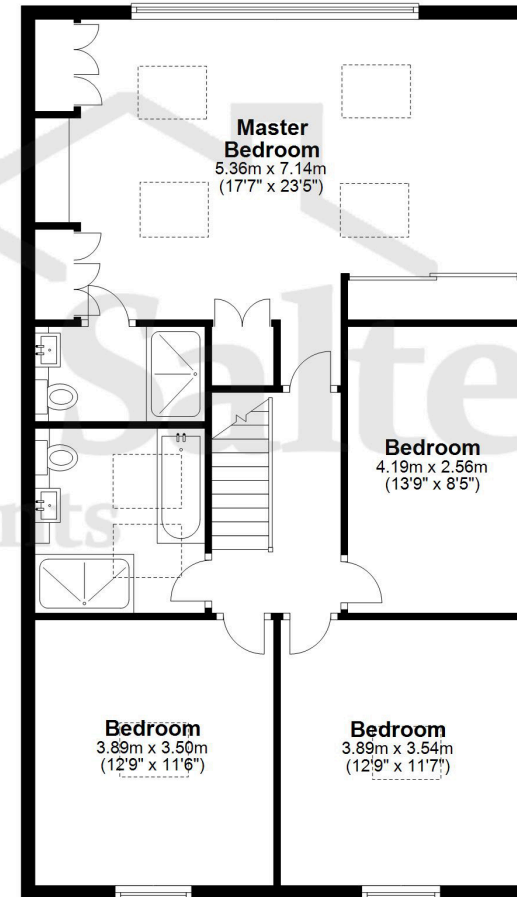
3.12m x 2.49m  
(10'3" x 8'2")

#### Living Room

3.89m x 7.14m  
(12'9" x 23'5")

### First Floor

Approx. 90.4 sq. metres (972.9 sq. feet)



#### Master Bedroom

5.36m x 7.14m  
(17'7" x 23'5")

#### Bedroom

4.19m x 2.56m  
(13'9" x 8'5")

#### Bedroom

3.89m x 3.50m  
(12'9" x 11'6")

#### Bedroom

3.89m x 3.54m  
(12'9" x 11'7")

Total area: approx. 206.4 sq. metres (2222.1 sq. feet)

THE FLOORPLAN IS FOR ILLUSTRATIVE PURPOSES ONLY AND IS NOT TO SCALE. Measurements and features are approximate and may differ from the actual property. Verify all details independently; no liability is accepted for errors or omissions.

Property marketing provided by [www.fotomarketing.co.uk](http://www.fotomarketing.co.uk)

#### Important notice

1. Particulars: These particulars are not an offer or contract, nor part of one. You should not rely on statements by Reynolds Salter in the particulars or by word of mouth or in writing ("information") as being factually accurate about the property, its condition or its value. Neither Reynolds Salter nor any joint agent has any authority to make any representations about the property, and accordingly any information given is entirely without responsibility on the part of the agents, seller(s) or lessor(s). 2. Photos etc: The photographs show only certain parts of the property as they appeared at the time they were taken. Areas, measurements and distances given are approximate only. Regulations etc: Any reference to alterations to, or use of, any part of the property does not mean that any necessary planning, building regulations or other consent has been obtained. A buyer or lessee must find out by inspection or in other ways that these matters have been properly dealt with and that all information is correct. 4. VAT: The VAT position relating to the property may change without notice.