

ANWYL  
thoughtful homes

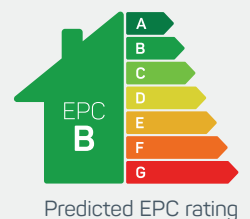


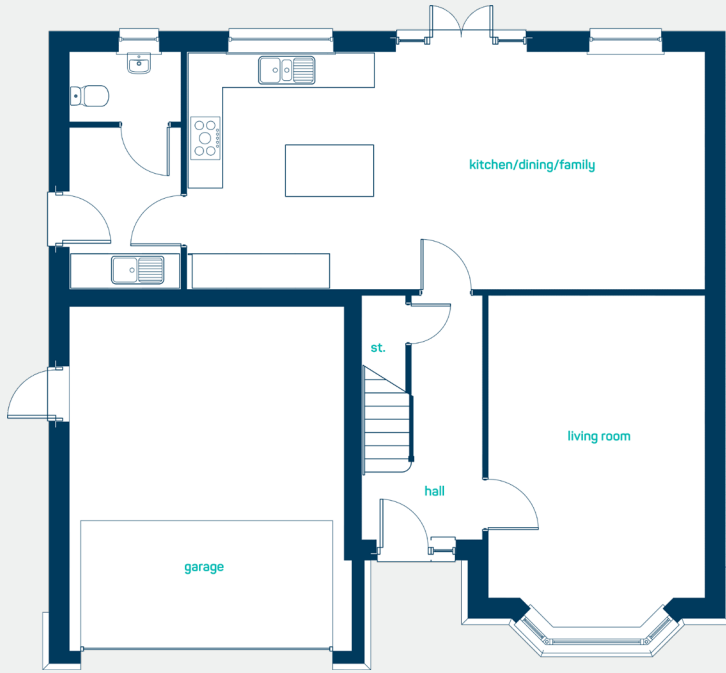
# the budworth

## 5 bed detached with garage

A *generously* proportioned executive home with space to spare.

[www.anwylhomes.co.uk](http://www.anwylhomes.co.uk)





Large open plan  
family space

### ground floor

kitchen/dining/  
family 29'6" x 13'5"  
utility 6'3" x 9'2"  
living room 12'3" x 19'0"  
cloaks 6'3" x 3'11"

kitchen/dining/  
family 9.00m x 4.10m  
utility 1.90m x 2.80m  
living room 3.74m x 5.78m  
cloaks 1.90m x 1.20m



### first floor

bedroom 1 12'3" x 14'11"  
en-suite 1 9'5" x 5'3"  
bedroom 2 12'3" x 13'4"  
en-suite 2 8'8" x 3'11"  
bedroom 3 16'5" x 12'3"  
bedroom 4 12'9" x 9'10"  
bedroom 5 10'7" x 9'10"  
bathroom 9'2" x 7'1"

bedroom 1 3.74m x 4.55m  
en-suite 1 2.86m x 1.60m  
bedroom 2 3.74m x 4.06m  
en-suite 2 2.64m x 1.20m  
bedroom 3 5.00m x 3.74m  
bedroom 4 3.88m x 2.99m  
bedroom 5 3.22m x 2.99m  
bathroom 2.80m x 2.15m

**the budworth**  
5 bed detached with garage

**ANWYL**  
thoughtful homes

**NEW  
HOMES  
QUALITY  
CODE**

**NEW HOMES  
OMBUDSMAN  
SERVICE**

[www.anwylhomes.co.uk](http://www.anwylhomes.co.uk)

Anwyl Homes is a Registered Developer with the NHQB. This is a computer-generated image of the budworth, elevation treatment may vary. Room sizes are approximate, dimensions are taken from the longest room point (please consult homes advisor for measurement points). Plots may be handed and any garages may be single or double. Kitchen and bathroom layouts are indicative. These plans are correct at the time of going to press, but may be subject to change during construction. Please ensure that you check for specific plot details. 20/09/23.

everything considered.