

Richmond House, Hinckley

£550 pcm Fees Apply



A ground floor two bedroom apartment located on Richmond Gate, Hinckley. The property briefly comprises an entrance hall, open plan lounge/kitchen, two bedrooms (with en-suite to master), and a family bathroom.

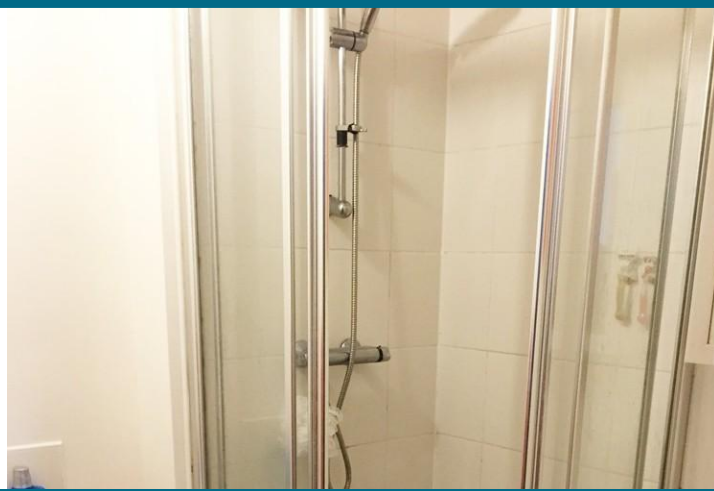
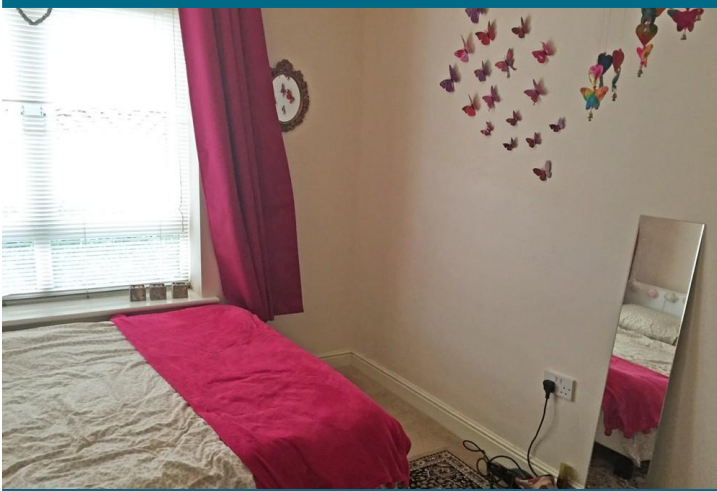
The property also benefits from off-road parking, double glazing. It is located within walking distance to several local schools and is also close to popular commuter routes.

Sorry No Pets, Smokers, or Housing Benefit applicants.

Contact Martin & Co Hinckley now to arrange your viewing!

- Popular Residential Area
- En-Suite to Master Bedroom
- Large lounge/kitchen
- Off-Road Parking





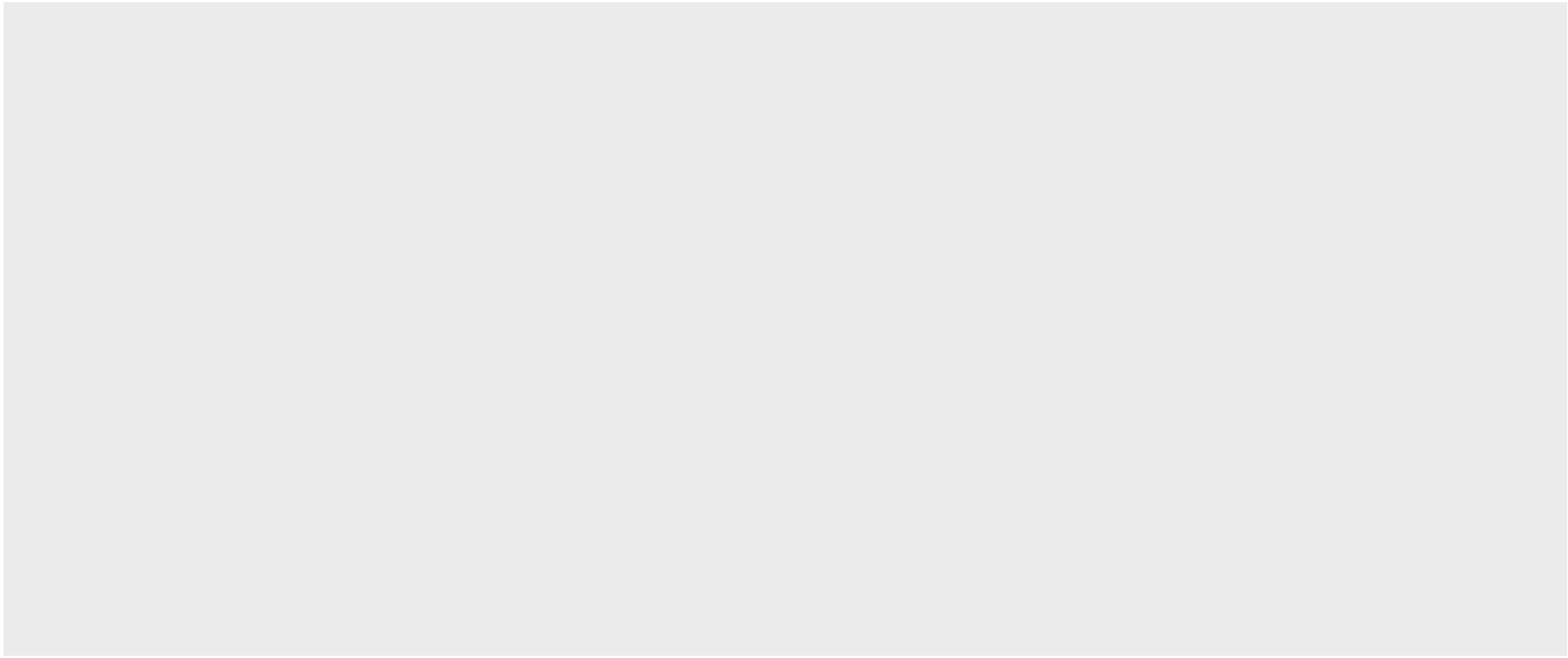
Property Description

A ground floor two bedroom apartment located on Richmond Gate, Hinckley. The property briefly comprises an entrance hall, open plan lounge/kitchen, two bedrooms (with en-suite to master), and a family bathroom.

The property also benefits from off-road parking, double glazing. It is located within walking distance to several local schools and is also close to popular commuter routes.

Sorry No Pets, Smokers, or Housing Benefit applicants.

Contact Martin & Co Hinckley now to arrange your viewing!



Furnished

Unfurnished

Viewing Arrangements

Strictly by appointment

Contact Details

99-109 Castle Street

Hinckley

Leicestershire

LE10 1DA

www.martinco.com

hinckley@martinco.com

01455 636349

%epcGraph_c_1_349%

Agents Note: Whilst every care has been taken to prepare these sales particulars, they are for guidance purposes only. All measurements are approximate and for general guidance purposes only and whilst every care has been taken to ensure their accuracy, they should not be relied upon and potential buyers are advised to recheck the measurements