



Coopers

Albany Road, Earlsdon, Coventry CV5 6JR

Guide Price £330,000



Albany Road

Earlsdon, Coventry

Spacious terraced property in great location close to Earlsdon High Street and the City Centre. Suitable for investment or private ownership. Hallway, 2 reception rooms, breakfast kitchen and shower room. 3 bedrooms - (main bedroom currently partitioned to create 4th bedroom) and bathroom. Gas CH and d/glazing.

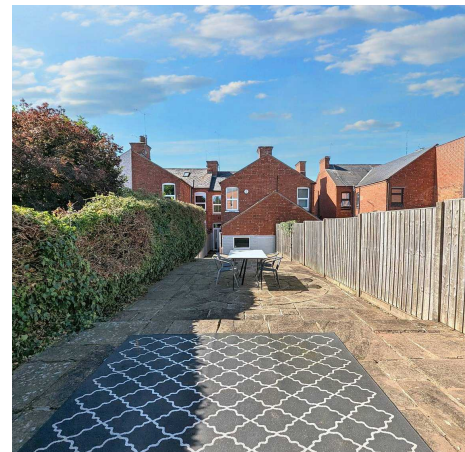
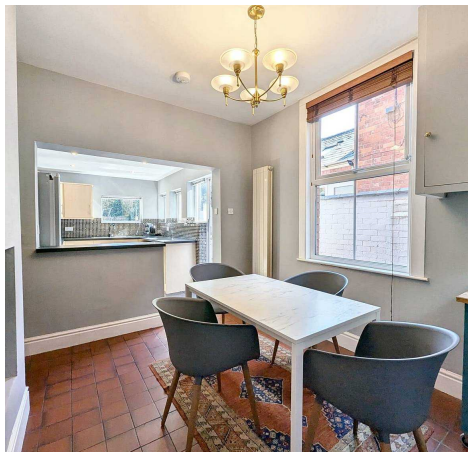
Council Tax band: C

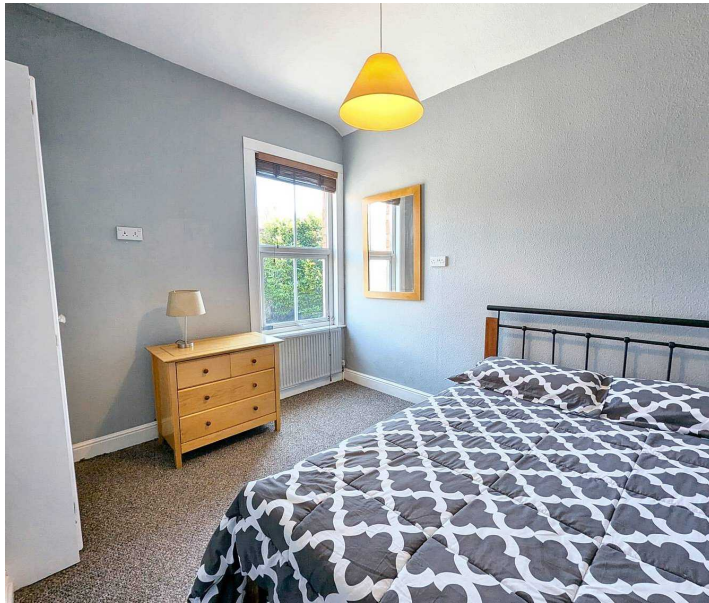
Tenure: Freehold

EPC Energy Efficiency Rating: D

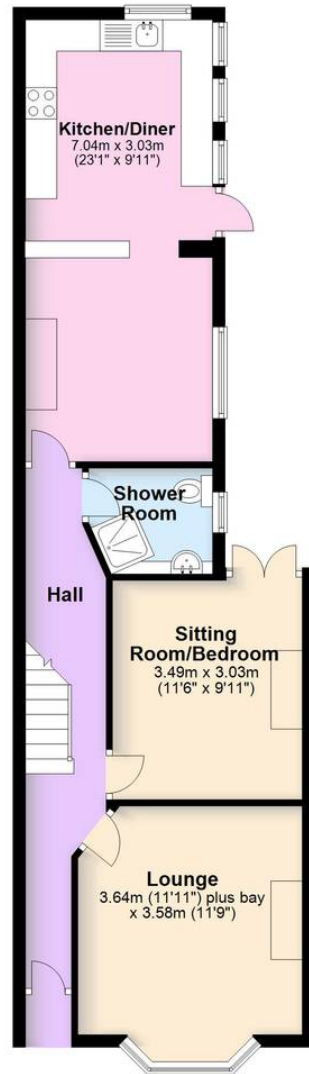
EPC Environmental Impact Rating: D

- TENANTED UNTIL 01/09/2024 AT £1,695PCM
- Spacious terraced property in convenient location
- Two reception rooms
- Enlarged breakfast kitchen and shower room
- Three original bedrooms (main bedroom currently partitioned to create a 4th) and bathroom
- Suitable as an investment or owner occupation





Ground Floor



First Floor



This floor plan is for illustrative purposes only and should be used as such by any prospective purchaser. Whilst every attempt has been made to ensure the accuracy of this plan, measurements of doors, windows, rooms and other items are approximate and no responsibility is taken for any error, omission or mis-statement.
Plan produced using PlanUp.

Coopers Estate Agents

Coopers, 22 New Union Street - CV1 2HN

Coopers

024 7655 2841 • sales@coopersestateagents.com • www.coopersestateagents.com/

Coopers Chartered Surveyors Ltd, 22 New Union Street, Coventry, West Midlands

CV1 2HN, 024 7655 2841, sales@coopers-cov.com. Company Registration

Number: 6725089 / VAT number: 940 3555 34