

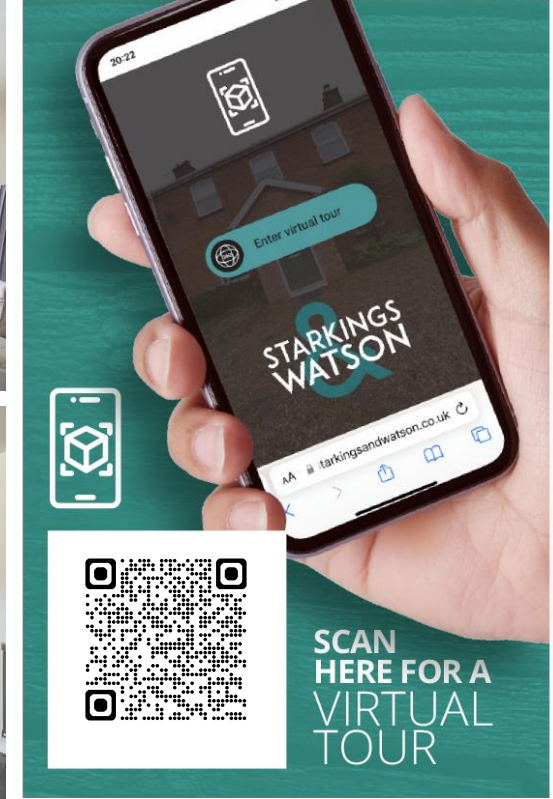
BUCKNAM CLOSE

Kessingland, Lowestoft NR33 7NX

Freehold | Energy Efficiency Rating : D

To arrange an accompanied viewing please pop in or call us on 01603 336116

FOR SALE
PROPERTY



For our full list of available properties, or for a FREE INSTANT online valuation visit

starkingsandwatson.co.uk



STARKINGS
WATSON

- Detached Chalet Bungalow
- Cul-De-Sac Location
- Kitchen & Separate Sitting Room
- Three Bedrooms Over Two Floors
- Family Bathroom & W/C
- Rear Gardens & Driveway Parking
- Garage, Driveway & Outbuildings
- Close To Amenities & Beach

IN SUMMARY

Located in a small and QUIET CUL-DE-SAC in the popular COASTAL VILLAGE of KESSINGLAND is this DETACHED THREE BEDROOM CHALET BUNGALOW presented in good order. The property extends to approximately 1000 SQFT (stms) with very flexible layout and could be used in a number of different ways. You will find a well fitted kitchen/breakfast room, large and BRIGHT SITTING ROOM, DINING HALL, conservatory, TWO GROUND FLOOR BEDROOMS and family bathroom. On the first floor there is a further double bedroom with an en-suite w/c. Externally you will find a LOW MAINTENANCE REAR GARDEN for ease of maintenance with summer house and storage shed as well as DRIVEWAY PARKING and GARAGE to the front. The property is found within easy access of the local amenities that Kessingland has to offer as well as the BEACH!

SETTING THE SCENE

Approached via the cul-de-sac there is a hard standing driveway providing off road parking leading to the single garage to the rear. The main entrance

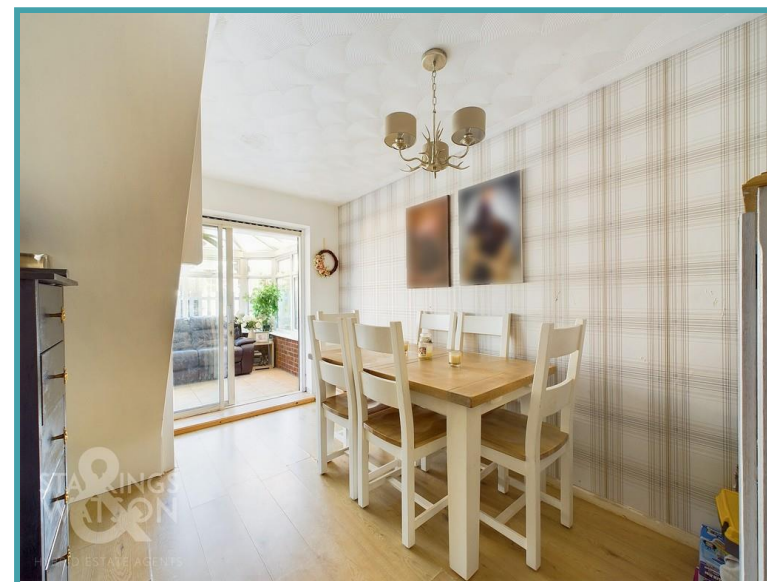
door is found to the side off the driveway and there are pleasant front lawns also.

THE GRAND TOUR

Accessed via the main entrance door to side you are straight into the kitchen/dining room with a range of fitted units and rolled edge worktops over. There is a double range oven as well as space for all other white goods. The gas fired boiler is found wall mounted. beyond the kitchen is the inner hallway with access to all other rooms. To the left is the family bathroom with wood panelling and shaped bath with electric shower over. Next is a bedroom overlooking the rear garden with the dining hall adjacent to that. The dining room has stairs to the first floor bedroom as well as access to the conservatory beyond and the garden off that. Also off the hallway is the main sitting room to the front, a lovely bright space with bay window to the front and wood effect flooring. The final ground floor bedroom is found adjacent to the sitting room and overlooks the rear garden. Heading up to the first floor there is a double bedroom with fitted wardrobes as well as the en-suite w/c and hand wash basin.

THE GREAT OUTDOORS

The private and enclosed rear garden is a low maintenance space, mainly consisting of a patio area, perfect for your outdoor entertaining during the summer months. With the addition of a versatile summer house to the rear and storage shed, the garden is currently set over multiple levels and also enjoys access to the garage from the side. There is



To arrange an accompanied viewing please call our Centralised Hub on **01603 336116**



also a side gate leading to and from the side driveway.

OUT & ABOUT

Kessingland is a large village just four miles south of Lowestoft. Lowestoft is a seaside town located to the North-East of Suffolk. With sandy beaches and many enjoyable seaside and historical walks, Lowestoft offers something for everyone. Lowestoft seafront provides a traditional seaside experience including a vast variety of places to dine and shop. Lowestoft has a rich Maritime history and offers easy access to the Norfolk Broads network of waterways which can be found at Oulton Broad.

FIND US

Postcode : NR33 7NX

What3Words : ///carpeted.bonkers.sparrows

VIRTUAL TOUR

View our virtual tour for a full 360 degree of the interior of the property.

Disclaimer: Whilst every care has been taken to prepare these sales particulars, they are for guidance purposes only. All measurements are approximate are for general guidance purposes only and whilst every care has been taken to ensure their accuracy, they should not be relied upon and potential buyers are advised to recheck the measurements.

Price:



For our full list of available properties, or for a FREE INSTANT online valuation visit

starkingsandwatson.co.uk

GIRAFFE 360

While every attempt has been made to ensure accuracy, all measurements are approximate, not to scale. This floor plan is for illustrative purposes only.

(1) Excluding balconies and terraces

Reduced headroom (below 1.5m/4.92ft)

Approximate total area^m
 950.24 ft²
 88.28 m²

Reduced headroom
 10.55 ft²
 0.98 m²

STARKINGS WATSON
 HYBRID ESTATE AGENTS

