



**1 Jubilee Terrace East Street, Westbourne**  
Emsworth

Offers in Region of **£265,000**

 **chinneckshaw**



# 1 Jubilee Terrace East Street

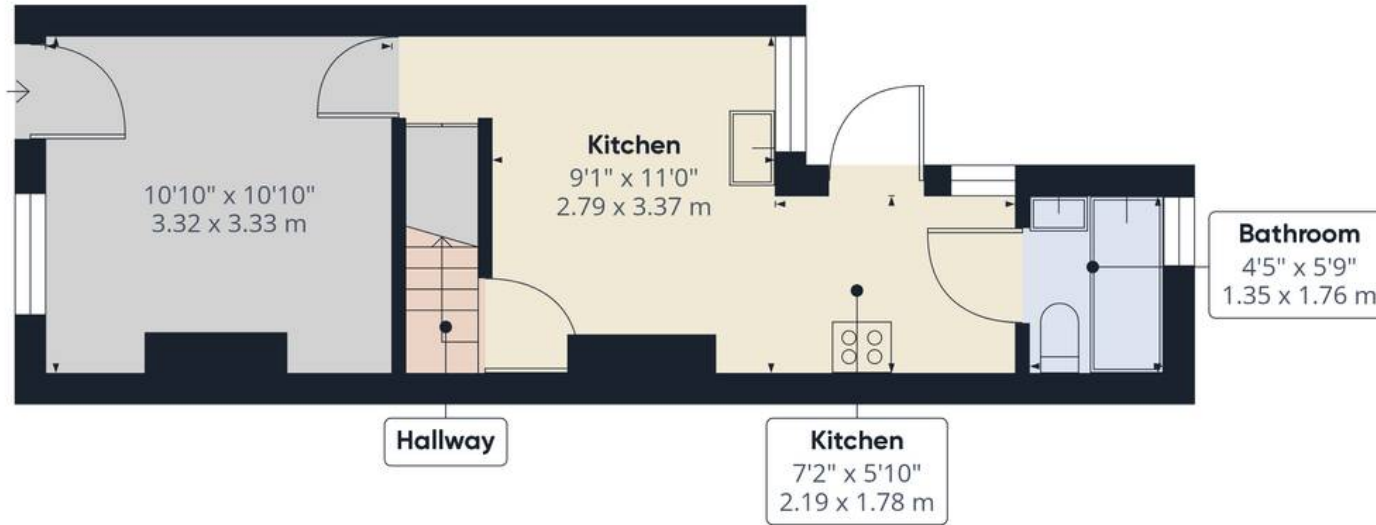
Westbourne, Emsworth

Situated in the centre of the much sought-after and picturesque village of Westbourne, this delightful end-of-terrace cottage at Jubilee Terrace offers a serene retreat steeped in history. Originally built for agricultural workers, the property exudes character and charm.

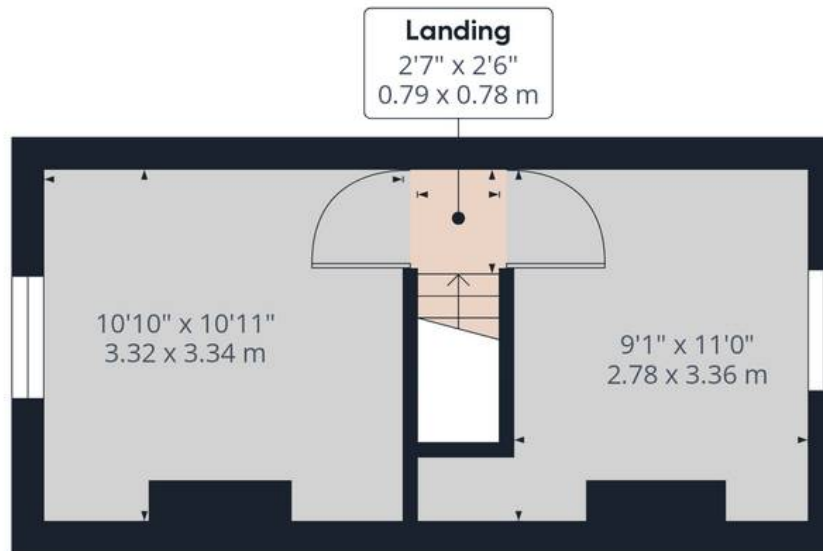
Westbourne boasts a thriving community with numerous local amenities, including good pubs, a local village bakery, the award-winning "Whistlers" chip shop, restaurants, a Co-op, and a pharmacy—all within a short walking distance. The village stands on the River Ems and is just 2 miles from Emsworth and its railway station. It is conveniently located 10 miles from Goodwood and its Festival of Speed, near Chichester, and the beautiful beaches of Hayling Island and West Wittering. Additionally, there are many local walks to enjoy in this pretty village.

Nestled behind the main road, Jubilee Terrace stands proudly at the end of the terrace homes. The approach to this home sets a welcoming tone, with its cottage-like appeal.





Ground Floor



Floor 1

Approximate total area<sup>(1)</sup>

539.61 ft<sup>2</sup>

50.13 m<sup>2</sup>

(1) Excluding balconies and terraces

While every attempt has been made to ensure accuracy, all measurements are approximate, not to scale. This floor plan is for illustrative purposes only.

GIRAFFE360



## Chinneck Shaw

Bridge House, Milton Road, Portsmouth – PO3 6AN

023 9282 6731

[hello@chinneckshaw.co.uk](mailto:hello@chinneckshaw.co.uk)

[www.chinneckshaw.co.uk/](http://www.chinneckshaw.co.uk/)

Chinneck Shaw, Bridge House, Milton Road, PO3 6AN Consumer Protection from Unfair Trading Regulations 2008: These details are for guidance only and complete accuracy cannot be guaranteed. If there is any point which is of particular importance, verification should be obtained. The do not constitute a contract or part of a contract. All measurements are approximate. No guarantee can be given with regard to planning permissions or fitness for purpose. No apparatus, equipment, fixture or fitting has been tested. Items shown in the photographs are NOT necessarily included. Interested Parties are advised to check availability and make an appointment to view before travelling to see a property.