



**33 Hatfield Road, Torquay – TQ1 3BW**

Guide Price **£410,000**







## 33 Hatfield Road

Torquay, Torquay

Rare end of terrace period home with modern amenities and traditional charm. Features spacious rooms, modern kitchen, home gym, five bedrooms, annexe potential, front and rear gardens, and parking for two cars with EV charger. Ideal for those seeking a stylish home in convenient location.

Council Tax band: E

Tenure: Freehold

- A well presented and spacious end of terrace period home
- Modern kitchen with integrated appliances and separate utility room
- Lounge and separate study
- Second lounge/bedroom five
- Five bedrooms, principal with en suite bathroom and dressing room
- Family bathroom and cloakroom/WC
- Home gym
- Front and rear gardens
- Potential for an annexe (subject to planning permission)
- Driveway parking for two cars with an EV charger





# 33 Hatfield Road

Torquay, Torquay

The property is situated in a desirable residential location on the outskirts of Torquay town centre. This sought-after location offers a perfect blend of convenience and tranquility. Residents benefit from excellent access to local amenities, including shops, schools, and public transport links. It is in close proximity to Torquay's vibrant town centre, providing easy access to a wide range of shops, restaurants, facilities and amenities.

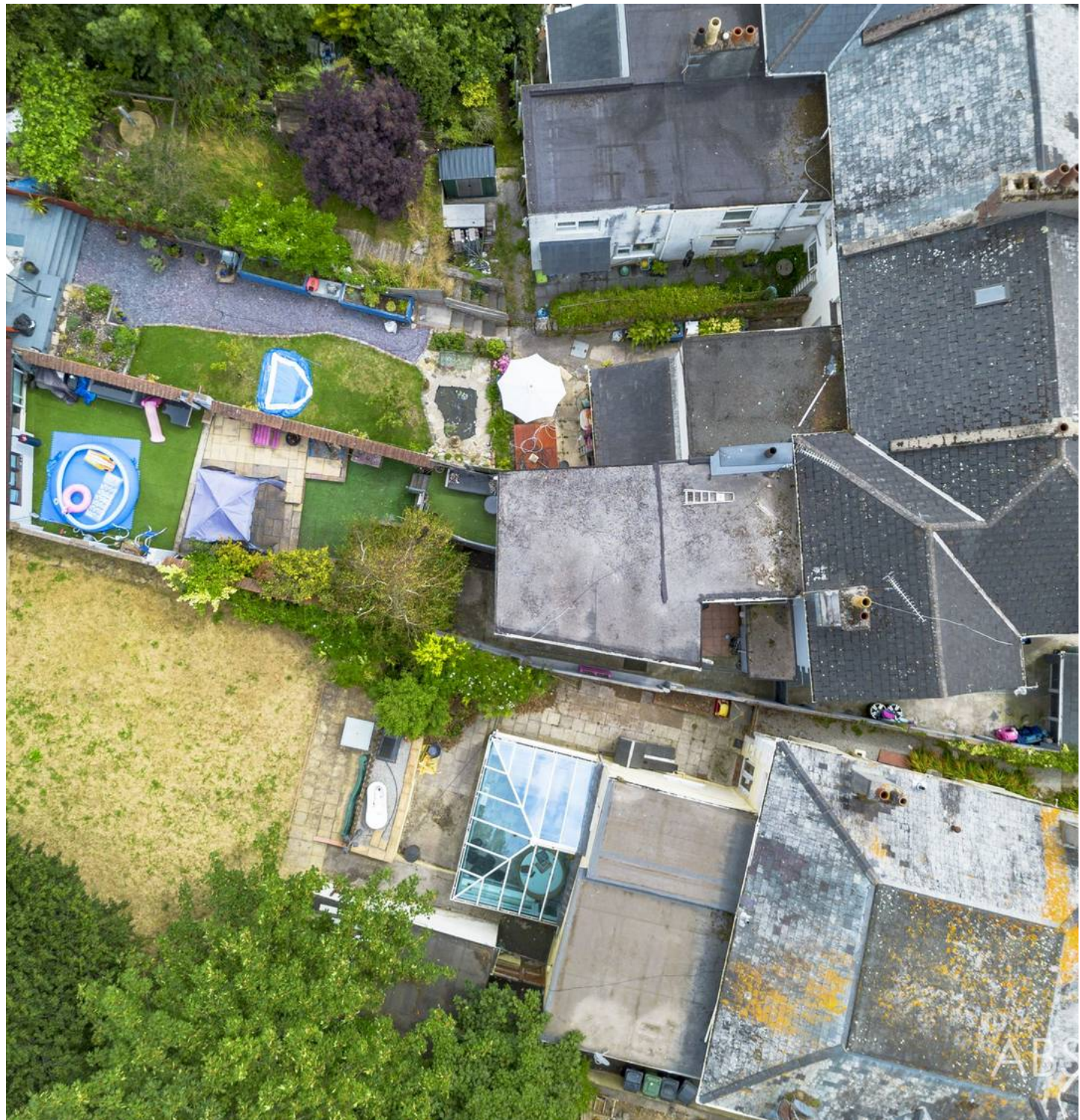
## Absolute Sales & Lettings

Absolute Sales & Lettings Ltd, 13 Ilsham Road - TQ1 2JG

01803 214214

[torquay@movewithabsolute.co.uk](mailto:torquay@movewithabsolute.co.uk)

[movewithabsolute.co.uk/](http://movewithabsolute.co.uk/)





GROUND FLOOR  
85.2 sq.m. (920 sq.ft.) approx.



1ST FLOOR  
85.7 sq.m. (922 sq.ft.) approx.



TOTAL FLOOR AREA: 170.9 sq.m. (1842 sq.ft.) approx.

While every attempt has been made to ensure the accuracy of the floorplan contained here, measurements of doors, windows, rooms and any other items are approximate and no responsibility is taken for any error, omission or misstatement. This plan is for illustrative purposes only and should be used as such by any prospective purchaser. The services, systems and appliances shown have not been tested and no guarantee as to their operability or efficiency can be given.  
Made with Viewplan 10/23

