

S&B



2 Bedroom First Floor Maisonette Kingston Vale, Kingston upon Thames £365,000 Leasehold

A newly refurbished, two bedroom first floor maisonette situated in Kingston Vale. Access to the property is via a private front door and stairs ascending to the first floor. The property offers a spacious reception room, principal bedroom with a bay window, second bedroom, modern bathroom with a white suite.

There is a separate newly fitted kitchen with appliances, and a door with steps down to the private west facing garden.

The property also offers newly fitted carpets throughout.

Vale Crescent is ideally situated with easy access for the A3.

The property is offered to the market with no onward chain and vacant possession.

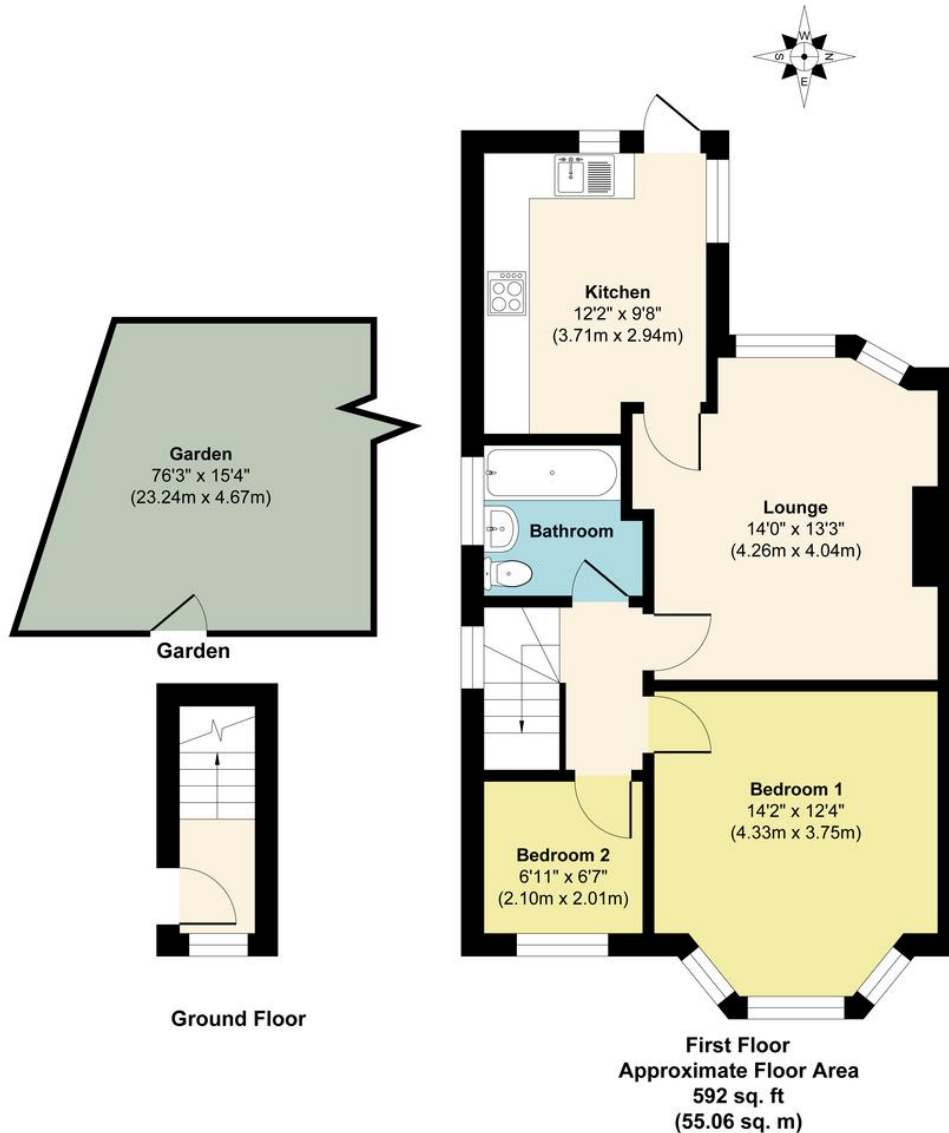
WWW.STACKANDBONNER.COM

020 8974 8844

sales@stackandbonner.com



Vale Crescent, SW15



- 2 Bedroom First Floor Maisonette
- Private Garden
- Spacious Reception Room
- Newly Fitted Kitchen with appliances
- Principal Bedroom with Bay Window
- Modern White Bathroom Suite
- Newly Fitted Carpets Throughout
- Newly Refurbished
- Council Tax: Band C - £2,110.50 per annum