

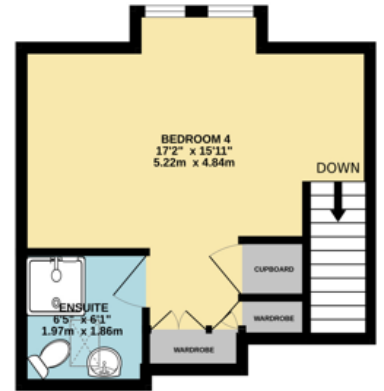
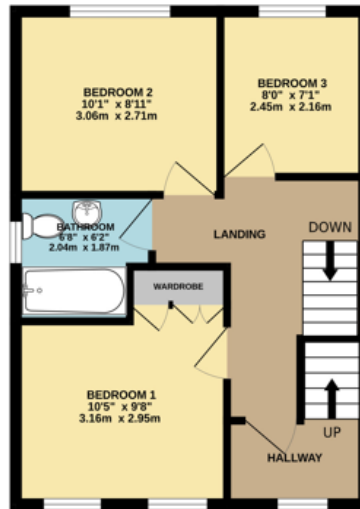
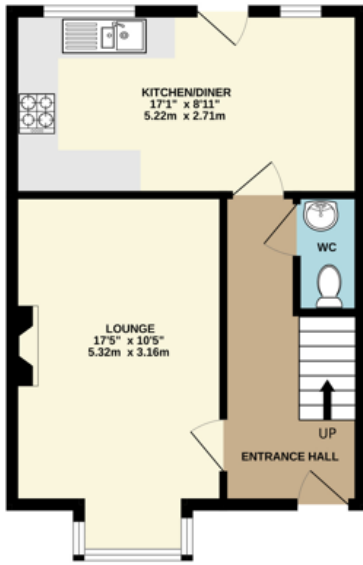


16 Lambrell Green | Kiveton Park | Sheffield | S26 5NT

Guide Price £240,000 to £250,000

Bell & Co Estates are delighted to present this FOUR Bedroom SEMI-DETACHED home, over three floors in the heart of Kiveton Park. In brief the property comprises of Entrance Hall with convenient downstairs WC, separate front facing Lounge with electric fire, spacious modern Kitchen with Dining Area and door access into the Garden. To the first floor are TWO DOUBLE BEDROOMS and a good size single Bedroom as well as the family Bathroom complete with bath, wash basin and WC. To the second floor is the MASTER suite with airing cupboard and ENSUITE Shower Room with wash basin and WC, with large Velux windows looking over the rear. To the front of the property is a small, grassed area with on road parking and to the side of the adjoining property is the GARAGE with off parking. To the rear of the property is a DECKING AREA with steps down into the enclosed garden which is mainly laid to lawn. Close to local amenities, schools and transport links this home is in a prime location. Viewing is highly recommended to fully appreciate what this home has to offer.

- Four Bedroom Semi-Detached
- Spacious Lounge
- Modern Kitchen / Diner
- Four generously size Bedrooms
- Master with Ensuite
- Off Road Parking
- Garage



Contact Details

79 Wales Road
Kiveton Park
Sheffield
South Yorkshire
S26 6RA

www.bellcoestates.com
info@bellcoestates.com
03333 580590

16 Lambrell Green
Kiveton Park
SHEFFIELD
S26 5NT

Energy rating

C

Valid until
5 July 2033

Certificate number
0166-0029-5233-6817-9200

Property type Semi-detached house

Total floor area 103 square metres

Agents Note: Whilst every care has been taken to prepare these sales particulars, they are for guidance purposes only. All measurements are approximate and for general guidance purposes only and whilst every care has been taken to ensure their accuracy, they should not be relied upon and potential buyers are advised to recheck the measurements