



## 1 St. Stephens Road, Blackburn

£130,000 Freehold

LARGE THREE BEDROOM TERRACED HOME WITH TWO RECEPTION ROOMS IN LITTLE HARWOOD. Located in this highly popular residential area, this large terraced home presents a blank canvas for a family to make their own and add value with some cosmetic upgrades

Council Tax band: A

Tenure: Freehold



Welcome to this charming three bedroom end of terrace home located in the highly popular area of Little Harwood. Situated in a close-knit community, this property offers a fantastic opportunity to create a home tailored to your taste while adding significant value.

As you step inside, you are greeted by a spacious hallway leading to the staircase and two generously sized reception rooms. The potential is abound to transform these spaces into inviting areas perfect for relaxation and entertaining family and friends with some cosmetic upgrades. Further potential can be found in the kitchen and utility - both in need of upgrades but boast a sizable footprint to improve and make your own while having the potential for a downstairs bathroom.

Head upstairs and the property boasts three double bedrooms, ensuring ample accommodation for a growing family or those in need of a home office or guest room.

Conveniently located within walking distance to local schools and places of worship, this residence is ideal for families seeking a home that is central to key amenities and community hubs. The vibrant neighbourhood adds to the appeal of this lovely home, promising a lifestyle filled with convenience and connectivity to the surrounding area.



**Vestibule****Hallway**

Carpet flooring, stairs to first floor

**Lounge**

Carpet flooring, electric fire, storage heater, two upvc double glazed windows

**Second Reception Room**

Carpet flooring, storage heater, under stair storage, two upvc double glazed windows

**Kitchen**

Range of fitted wall and base units with contrasting worksurfaces, stainless steel sink and drainer, lino flooring, upvc double glazed window and door to yard

**Utility**

Lino flooring, plumbed for washing machine, sink, two wooden windows

**Landing**

Carpet flooring, upvc double glazed window

**Bedroom 1**

Carpet flooring, storage heater, upvc double glazed window

**Bedroom 2**

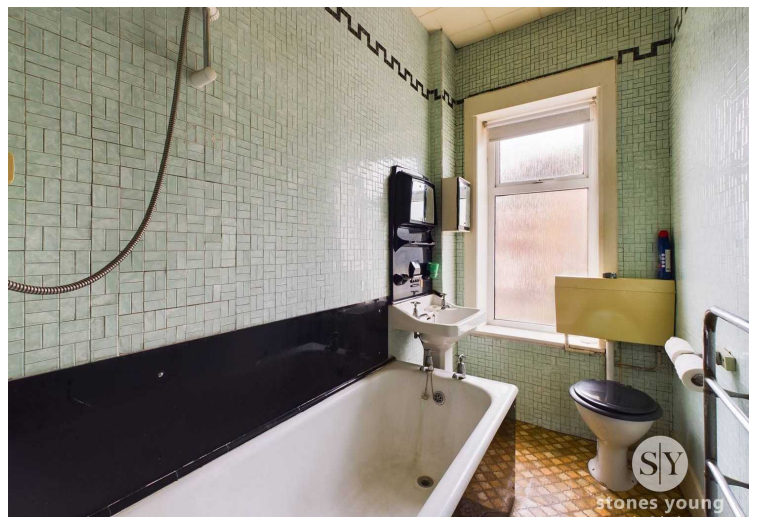
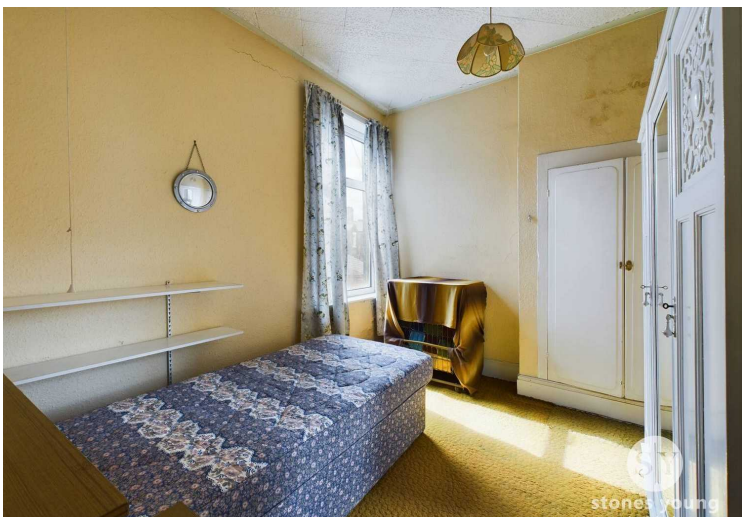
Carpet flooring, upvc double glazed window

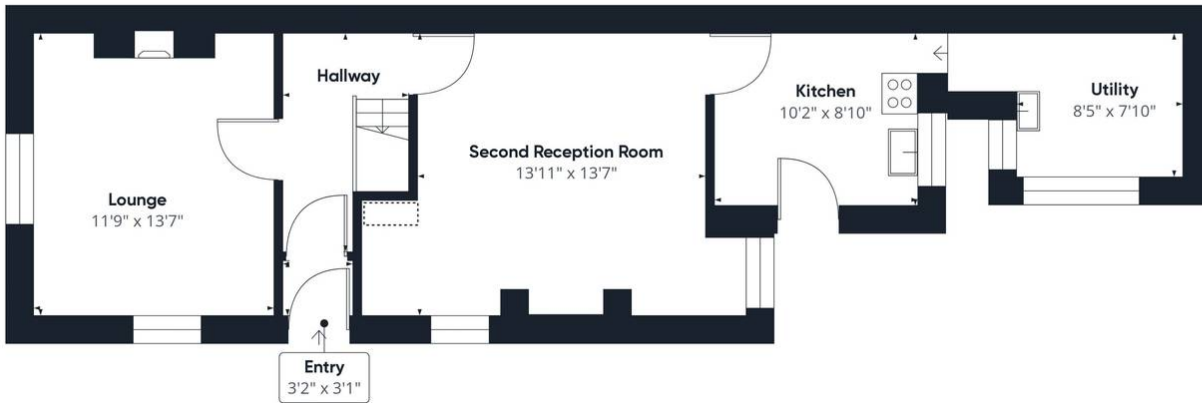
**Bedroom 3**

Carpet flooring, upvc double glazed window

**Bathroom**

Three piece suite with electric shower over bath, wc, sink, cupboard housing water tank, upvc glazed frosted window






Floor 0



Floor 1

Approximate total area<sup>(1)</sup>  
1108.68 ft<sup>2</sup>  
Reduced headroom  
2.91 ft<sup>2</sup>

(1) Excluding balconies and terraces

 Reduced headroom  
(below 1.5m/4.92ft)

While every attempt has been made to ensure accuracy, all measurements are approximate, not to scale. This floor plan is for illustrative purposes only.

GIRAFFE360

You can include any text here. The text can be modified upon generating your brochure.