



25 DENTITH DRIVE, CHESTER

£269,499

- SECLUDED PRIVATE GARDEN
- QUIET CUL DE SAC
- RECENTLY EXTENDED
- OPEN PLAN LIVING
- HIGH SPEC INTERIOR
- SEPERATE GARAGE

25 DENTITH DRIVE, CHESTER, CH1 5HD



An extended and exceptionally presented end-terrace property tucked away in a popular cul-de-sac, this spacious three-bedroom home has been beautifully upgraded by the current owners to create the perfect home for any modern-day buyer.

The property is set back from the lane with a walled front garden, providing fantastic kerb appeal. The front door opens into a spacious hallway, featuring two useful storage cupboards to hide away shoes and coats, opposite the recently fitted downstairs toilet, which also houses the energy-efficient combi boiler that was fitted in January 2024, neatly hidden in a ready-made cupboard. Moving through to the living room, the ground floor seamlessly flows into the kitchen via a recently extended sunroom. The entire ground floor is filled with an abundance of natural light, creating a fantastic feel throughout. The extended sunroom, added in February 2023, creates an additional luxurious sitting room with garden access via two sets of sliding doors, to the rear and side. This room also benefits from underfloor heating, allowing it to be enjoyed all year round. The kitchen is separated from the sunroom by a solid oak breakfast bar. It features high-gloss base and wall units complemented by black granite worktops, an integrated under-counter fridge, freezer, washing machine, and a separate wine fridge.

Leading up to the first floor via a U-shaped staircase, the master bedroom is to the rear of the property overlooking the garden. It is a spacious room with a large window. Bedroom two, to the front of the property, is another good-sized double with a fitted storage cupboard. Bedroom three, to the rear of the house, is currently used as a dressing room but can accommodate a double bed if required. The three bedrooms are served by a white, three-piece bathroom suite.

Externally, the property has a wrap-around garden that gets sun all day long. The garden is low-maintenance, being part decked and part gravelled, with multiple seating areas to enjoy the outside space. The property also comes with a separate garage that has recently had a new door fitted.

Excellent amenities are on your doorstep, including a range of local shops, the popular cycle track providing access to Chester and North Wales, frequent bus links, and Chester city centre less than 10 minutes away by car.

25 DENTITH DRIVE, CHESTER, CH1 5HD



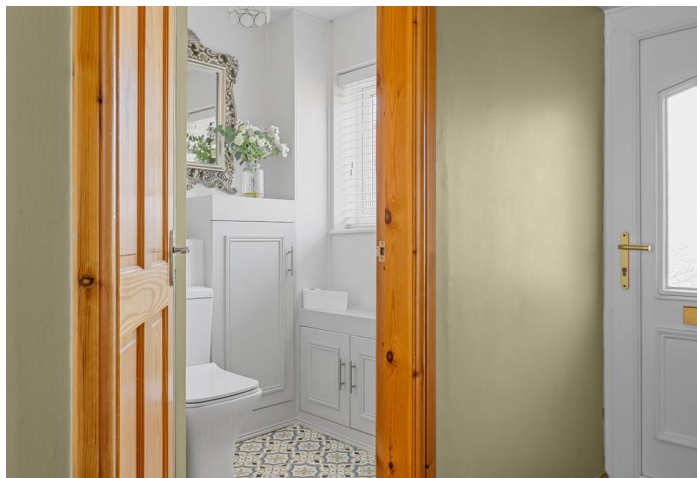
Council Tax:

Band B

Local Authority:

Cheshire West and Chester Council

25 DENTITH DRIVE, CHESTER, CH1 5HD



Total Floor Area:
1,055 sq ft / 98 sq m

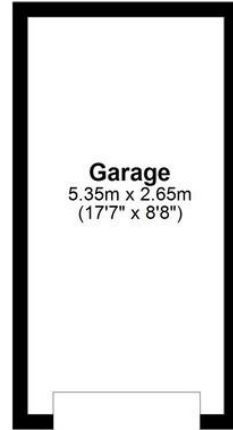
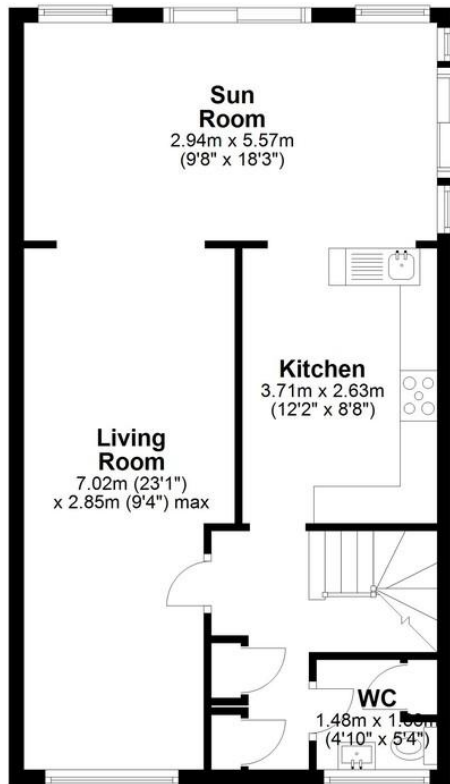
Viewings:
By prior appointment with the agent

25 DENTITH DRIVE, CHESTER, CH1 5HD



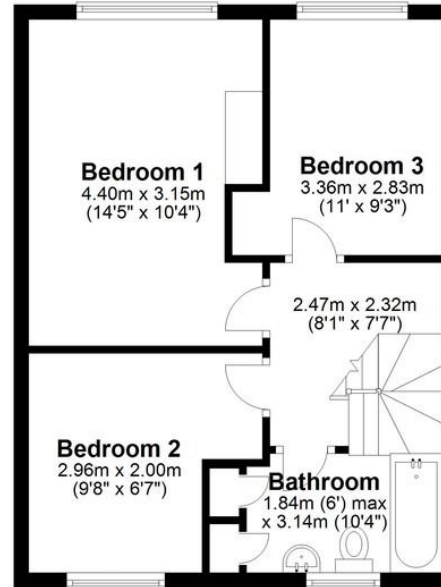
Ground Floor

Approx. 70.3 sq. metres (756.4 sq. feet)



First Floor

Approx. 41.9 sq. metres (451.3 sq. feet)



Total area: approx. 112.2 sq. metres (1207.7 sq. feet)

Score	Energy rating	Current	Potential
92+	A		
81-91	B		
69-80	C		78 C
55-68	D	67 D	
39-54	E		
21-38	F		
1-20	G		

OFFICE CONTACT INFO

Urban Sale and Let
19 Charles Street
Hoole
Chester
Cheshire
CH2 3AY

01244350300
info@urbansaleandlet.co.uk
www.urbansaleandlet.co.uk

Agents Note: Whilst every care has been taken to prepare these particulars, they are for guidance purposes only. All measurements are approximate, and are for general guidance purposes only and whilst every care has been taken to ensure their accuracy, they should not be relied upon and potential buyers/tenants are advised to recheck the measurements