

Price's Court, Cotton Row
Battersea, SW11 3YR

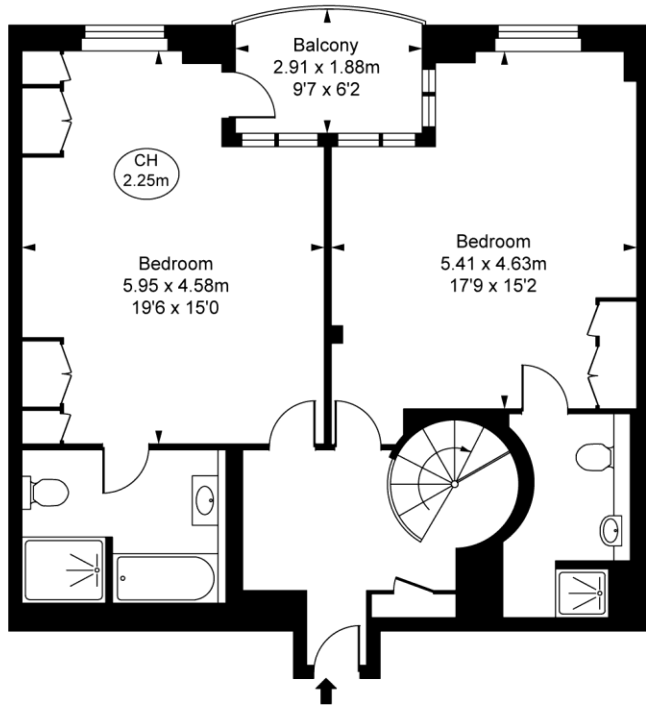
PROPERTY SUMMARY

A spectacular split level two-bedroom, two bathroom apartment with stunning uninterrupted river views and a westerly aspect. Covering in excess of 1,400 sqft, this apartment benefits from floor to ceiling windows to the reception room maximising the light and provides plenty of built-in storage throughout. The apartment includes one secure parking space.

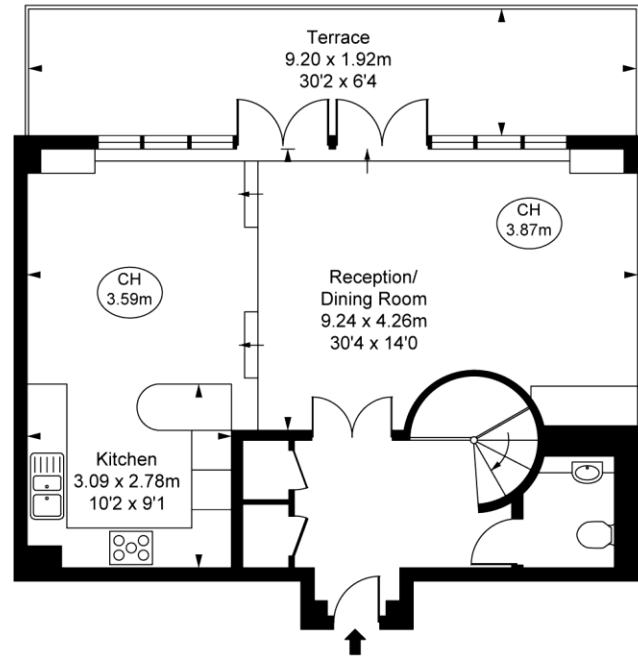




Penthouse,
Price's Court, SW11
Approximate Gross Internal Area
132.71 sq m / 1,428 sq ft
(CH = Ceiling Heights)



Fifth Floor
Approximate Gross Internal Area
74.34 sq m / 800 sq ft



Sixth Floor
Approximate Gross Internal Area
58.37 sq m / 628 sq ft

This plan is not to scale. It is for guidance and not for valuation purposes.
All measurements and areas are approximate only, and have been prepared in accordance with the current edition of the RICS Code of Measuring Practice.
© Fulham Performance

LOCAL AUTHORITY
Wandsworth Borough Council

TENURE
Leasehold

COUNCIL TAX BAND
Band G

VIEWINGS
By prior appointment only

Agents Note: Whilst every care has been taken to prepare these particulars, they are for guidance purposes only. All measurements are approximate and are for general guidance purposes only and whilst every care has been taken to ensure their accuracy, they should not be relied upon and potential buyers/tenants are advised to recheck the measurements



4 Vicentia Court
Bridges Wharf
London
SW11 3GY

02073522455
info@hgproperty.co.uk
www.hgproperty.co.uk