



1922. FINDING YOU A HOME SINCE  
**B**

**6 Les Serres, Longueville Road, St. Saviour**  
**£735,000**

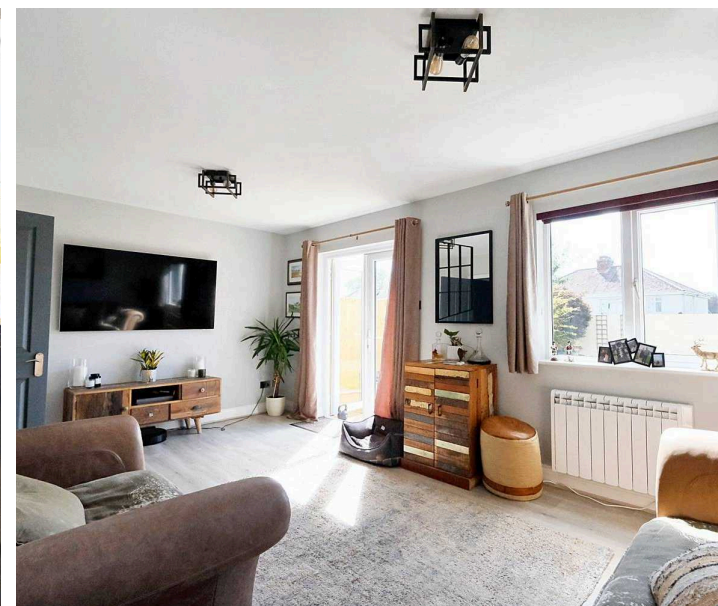
**BROADLANDS**

FINDING YOU A HOME SINCE 1972

## 6 Les Serres, Longueville Road

St. Saviour, Jersey

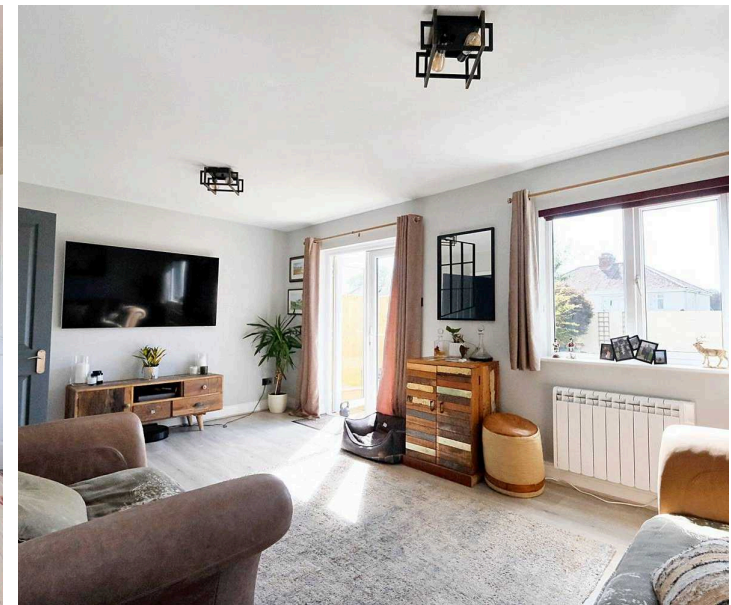
- Superbly presented first time buyers house
- Spacious home over 1800 sq ft
- Four double bedrooms, two bathrooms
- Fully fitted eat in kitchen
- Good size lounge opening onto garden
- Parking for 3 cars
- Private west facing garden
- Sole agent
- Call Ciara on 07797960571 / [ciara@broadlandsjersey.com](mailto:ciara@broadlandsjersey.com)



# 6 Les Serres, Longueville Road

St. Saviour, Jersey

- Superbly presented first time buyers house
- Spacious home over 1800 sq ft
- Four double bedrooms, two bathrooms
- Fully fitted eat in kitchen
- Good size lounge opening onto garden
- Parking for 3 cars
- Private west facing garden
- Sole agent
- Call Ciara on 07797960571 / [ciara@broadlandsjersey.com](mailto:ciara@broadlandsjersey.com)



## 6 Les Serres, Longueville Road

St. Saviour, Jersey

First time buyers only. This 4 Bedroom, 2 Bathroom house is located in an exceptionally popular First Time Buyers close, Les Serres. This fantastic home ticks all the boxes, least of all enjoy a gorgeous sunset from your beautiful west facing back garden. Built over 3 floors, the ground floor comprises; entrance hall, fully fitted eat in kitchen, living room which opens onto the garden and a WC. First floor offers 3 double bedrooms, house bathroom and large boiler/storage cupboard. On the third floor you will find a large double bedroom with En-suite bathroom. The rear garden is part laid to patio and part laid to lawn, with a garden shed and side access gate. Parking for 3 cars completes the package. Located in a popular development in St Saviour within walking distance of many primary and secondary schools. Conveniently close to Waitrose, the Co-Op, Marks & Spencer not to mention a quick hop to the beaches at Greve D'Azette and Havre des Pas.

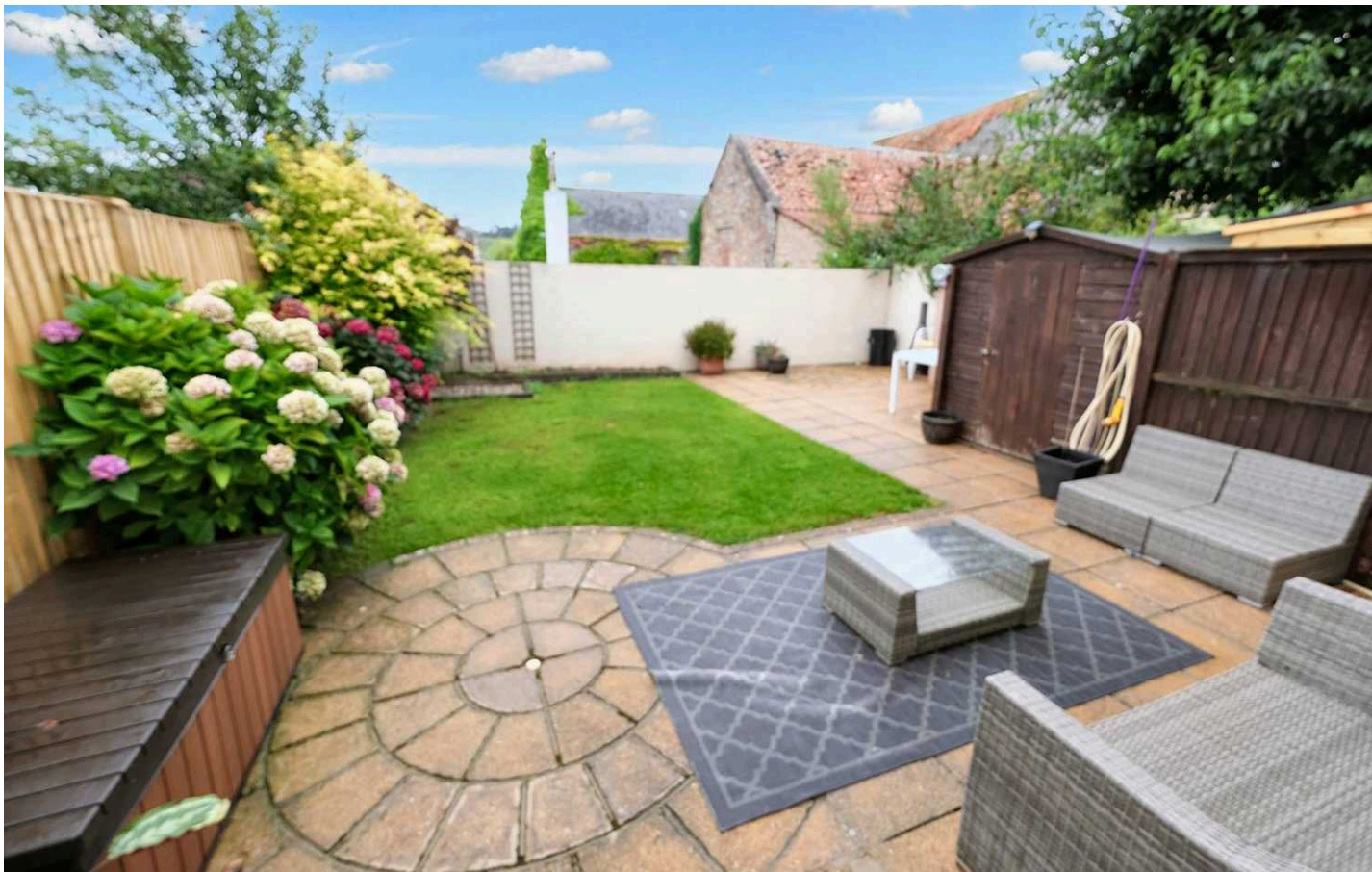


## 6 Les Serres, Longueville Road

St. Saviour, Jersey

First time buyers only. This 4 Bedroom, 2 Bathroom house is located in an exceptionally popular First Time Buyers close, Les Serres. This fantastic home ticks all the boxes, least of all enjoy a gorgeous sunset from your beautiful west facing back garden. Built over 3 floors, the ground floor comprises; entrance hall, fully fitted eat in kitchen, living room which opens onto the garden and a WC. First floor offers 3 double bedrooms, house bathroom and large boiler/storage cupboard. On the third floor you will find a large double bedroom with En-suite bathroom. The rear garden is part laid to patio and part laid to lawn, with a garden shed and side access gate. Parking for 3 cars completes the package. Located in a popular development in St Saviour within walking distance of many primary and secondary schools. Conveniently close to Waitrose, the Co-Op, Marks & Spencer not to mention a quick hop to the beaches at Greve D'Azette and Havre des Pas.





### **Living**

Generous lounge with patio doors into the garden. Eat in kitchen with full range of integrated appliances. Downstairs W.C.

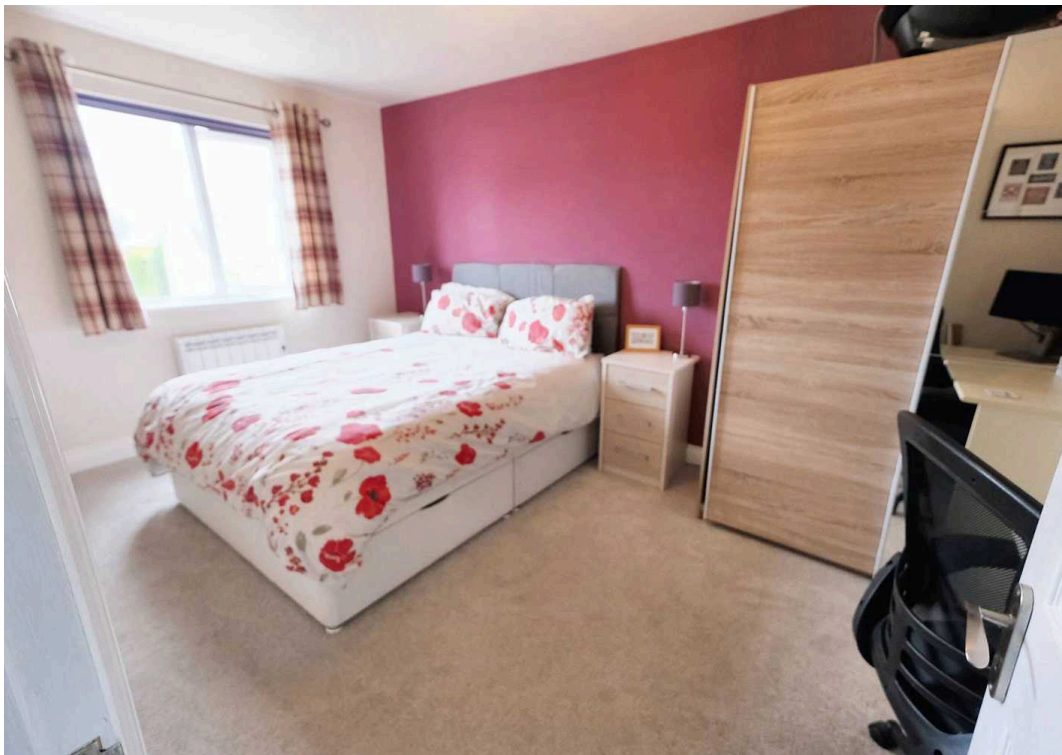
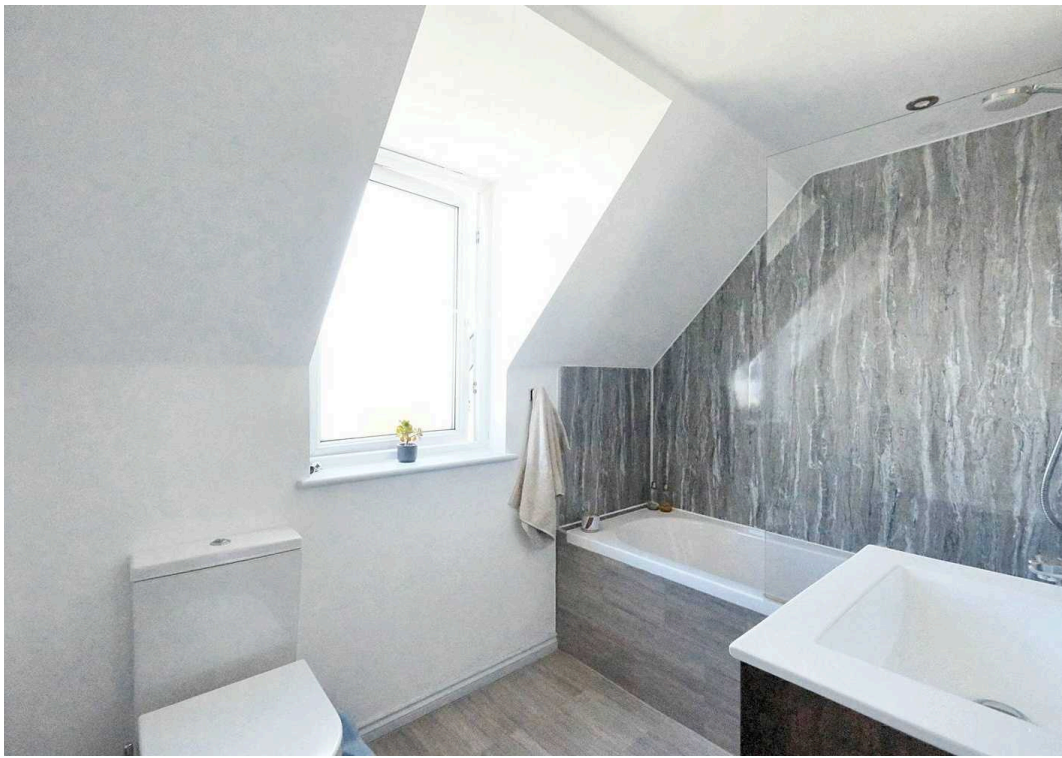
### **Sleeping**

4 double bedrooms, 2 bathrooms, 1 En-suite.

### **Services**

Fully double glazed. Electric heaters throughout. All mains services. Pressurized boiler. Underfloor heating in the eat in kitchen and En-suite. Communal fee £400 annual contribution to communal gardening and maintenance and children's play area.

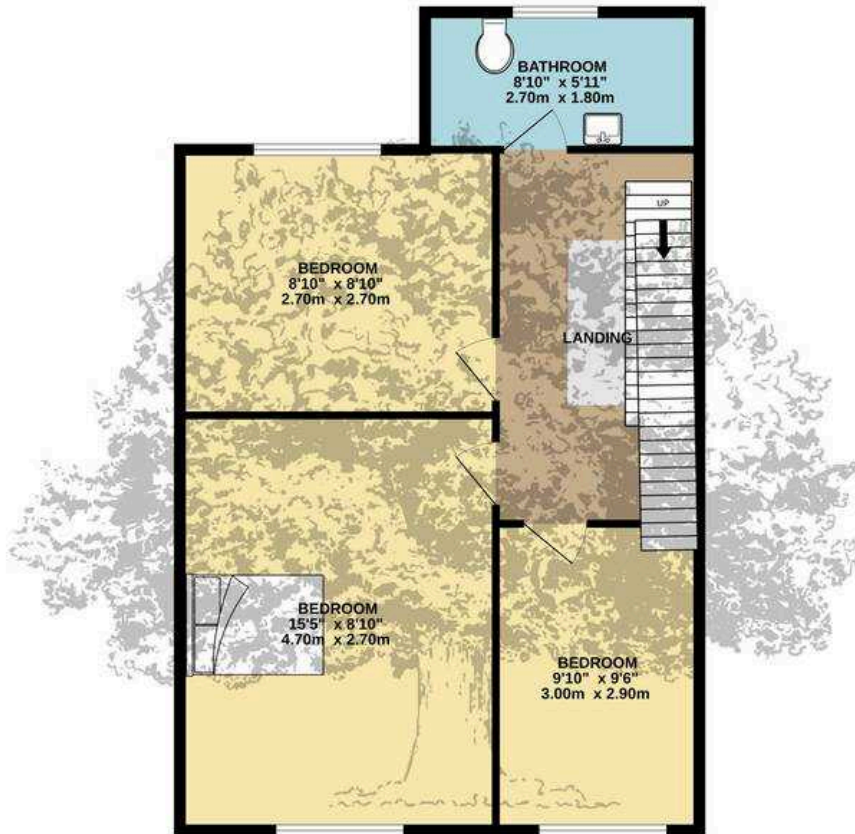




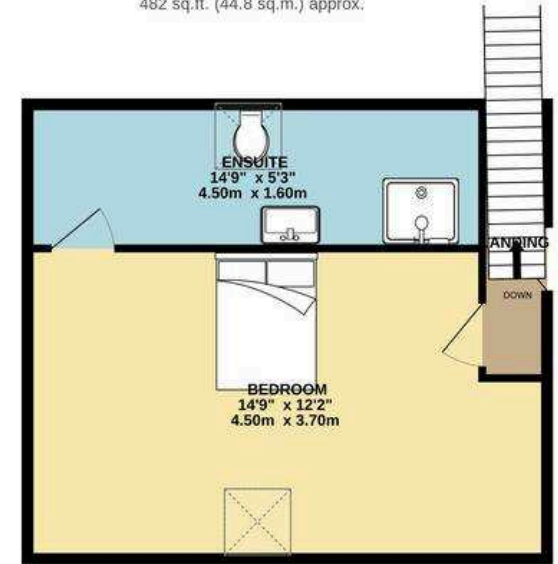
GROUND FLOOR  
664 sq.ft. (61.7 sq.m.) approx.



1ST FLOOR  
664 sq.ft. (61.7 sq.m.) approx.



2ND FLOOR  
482 sq.ft. (44.8 sq.m.) approx.



TOTAL FLOOR AREA : 1810 sq.ft. (168.2 sq.m.) approx.

Whilst every attempt has been made to ensure the accuracy of the floorplan contained here, measurements of doors, windows, rooms and any other items are approximate and no responsibility is taken for any error, omission or mis-statement. This plan is for illustrative purposes only and should be used as such by any prospective purchaser. The services, systems and appliances shown have not been tested and no guarantee as to their operability or efficiency can be given.

Made with Metropix ©2024





## Broadlands

Broadlands Estates, Library Place - JE2 3NL

01534 880770 • [enquiries@broadlandsjersey.com](mailto:enquiries@broadlandsjersey.com) • [www.broadlandsjersey.com/](http://www.broadlandsjersey.com/)

# BROADLANDS

FINDING YOU A HOME SINCE 1972