



## 32 Tothill Street, Ebbw Vale

£149,950 Freehold

End-of-Terrace House • Utility Room • First Floor Bathroom • Front and Rear Gardens • Garage • Popular Area  
• EPC Rating: D



1 Bethcar Street, Ebbw Vale, Gwent, NP23 6HH  
Tel: 01495 302301 Email: [ebbwvale@bidmeadcook.co.uk](mailto:ebbwvale@bidmeadcook.co.uk)  
[www.bidmeadcook.co.uk](http://www.bidmeadcook.co.uk)

An end-of-terrace property situated within a central and popular area of Ebbw Vale, being conveniently located for access to the local primary school and amenities. The accommodation comprises an entrance hallway, living/dining room, kitchen/diner, utility room and to the first floor are three bedrooms and bathroom. Benefits include double glazing, a combi gas central heating system, front and rear gardens having rear access and a garage to the side. Ideal Family Home.



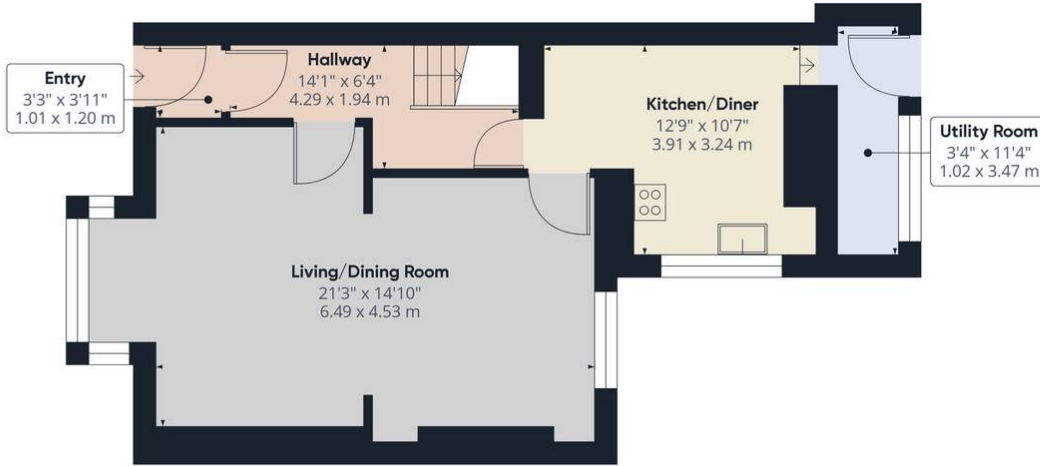
Council Tax band: B

Tenure: Freehold

EPC Energy Efficiency Rating: D

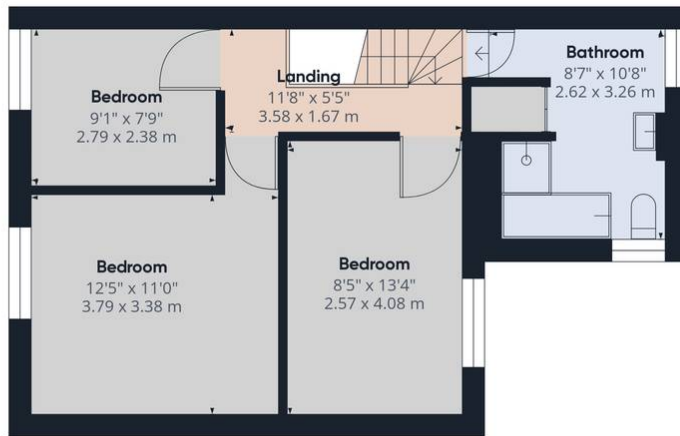
EPC Environmental Impact Rating:  
D





Ground Floor

**Approximate total area<sup>(1)</sup>**  
1031.83 ft<sup>2</sup>  
95.86 m<sup>2</sup>



Floor 1

(1) Excluding balconies and terraces

While every attempt has been made to ensure accuracy, all measurements are approximate, not to scale. This floor plan is for illustrative purposes only.

Calculations are based on RICS IPMS 3C standard.

GIRAFFE360

You can include any text here. The text can be modified upon generating your brochure.

You can include any text here. The text can be modified upon generating your brochure.

