

Manor Road

Salford



£375,000

Manor Road

Salford

****DON'T MISS OUT!**** Located on a popular road is this three bedroom, double storey extended semi-detached property! With an abundance of space, this property would be great for someone who is looking for a property to make their own!

Council Tax band: D

Tenure: Leasehold

- Double Storey Extended, Three Bedroom Property
- Located on a Popular Road, Just a Short Walk from Buile Hill Park
- Bay-Fronted Dining Room and a Large Lounge with Sliding Doors to the Rear
- Extended, Modern Fitted Kitchen
- Three Large Double Bedrooms
- Spacious Shower Room with a Separate W/C
- Great Family Location, Close to Local Schooling, Amenities and Several Well-Kept Parks
- Within Easy Access of Salford Royal Hospital
- Close to Excellent Transport Links into Salford Quays, Media City and Manchester City Centre
- Viewing is Highly Recommended to Appreciate the Size and Potential this Property has to Offer!



Porch

Featuring ceiling light point.

Entrance Hallway

Featuring a ceiling light point, wall - mounted radiator. Fitted with carpet flooring.

Reception One

13' 1" x 12' 0" (3.98m x 3.66m)

Featuring ceiling light point, double glazed bay window, wall - mounted radiator. Fitted with carpet flooring.

Reception Two

13' 0" x 12' 1" (3.96m x 3.69m)

Featuring two ceiling light point, two wall - mounted radiator, sliding doors. Fitted with carpet flooring.

Kitchen

20' 3" x 7' 4" (6.16m x 2.24m)

Featuring spotlights, two double glazed windows, fitted units including integrated hob and oven. Space for washer, dryer, fridge and freezer. Fitted with vinyl flooring.

w/c

4' 9" x 2' 6" (1.45m x 0.77m)

Featuring ceiling light point, double glazed window, w/c, sink. Complete with tiled walls. Fitted with vinyl flooring.

Landing

Featuring ceiling light point, double glazed window. Fitted with carpet flooring.

Bedroom One

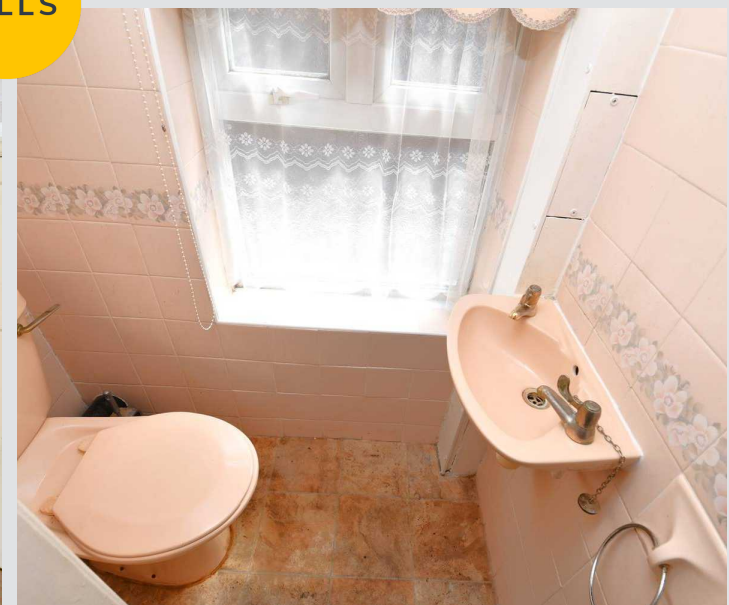
12' 4" x 10' 4" (3.77m x 3.14m)

Featuring ceiling light point, double glazed bay window, wall - mounted radiator. Fitted with carpet flooring.

Bedroom Two

13' 2" x 12' 1" (4.02m x 3.68m)

Featuring ceiling light point, double glazed window, wall - mounted radiator. Fitted with carpet flooring.



Bedroom Three

16' 8" x 7' 4" (5.08m x 2.23m)

Featuring two ceiling light points, two double glazed windows, two wall - mounted radiators. Fitted with carpet flooring.

Shower room

8' 11" x 7' 4" (2.73m x 2.24m)

Featuring two piece suite including hand wash basin, shower.

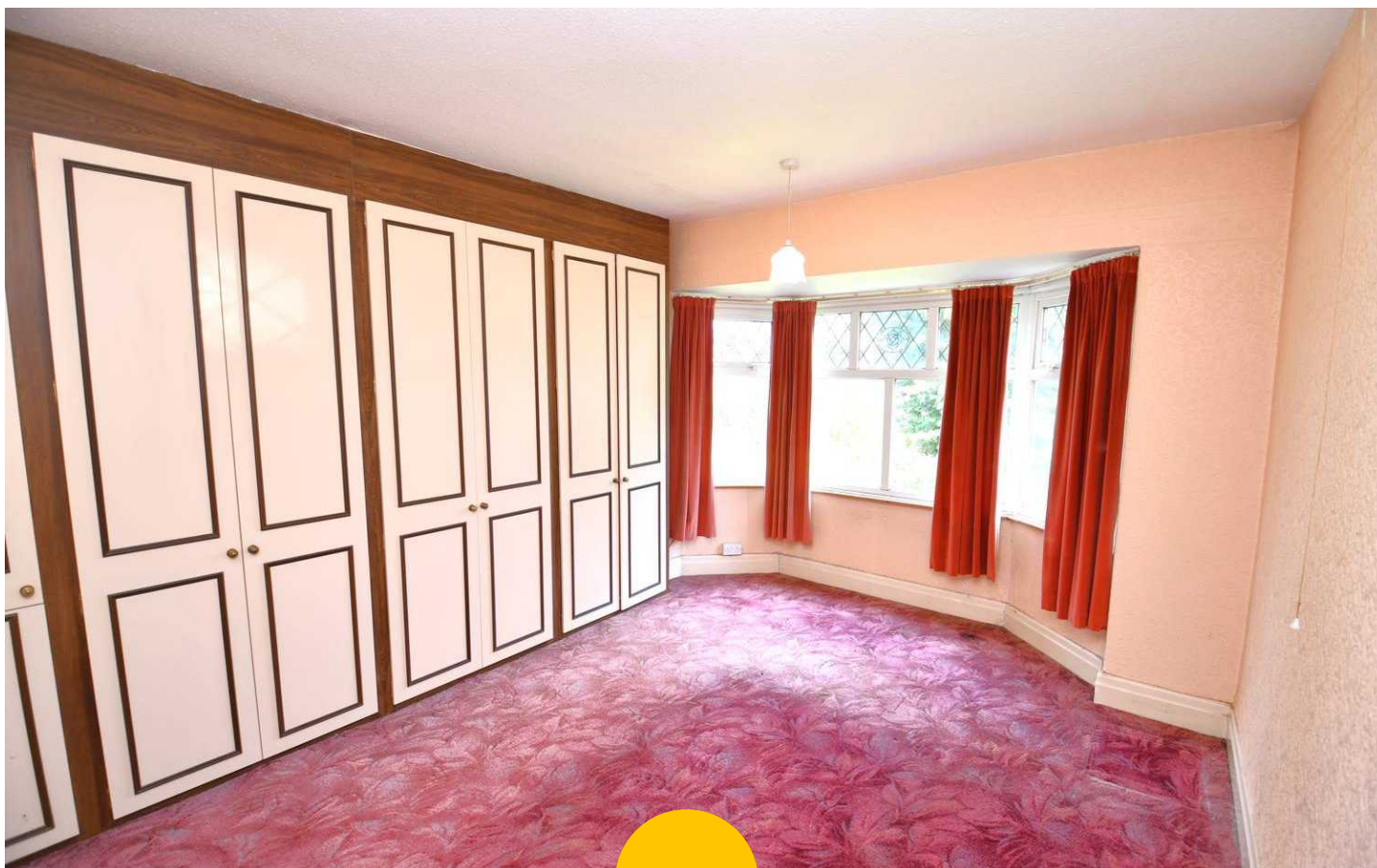
w/c

3' 1" x 4' 5" (0.93m x 1.34m)

Featuring ceiling light point, double glazed windows, wall - mounted radiator. Fitted with tiled walls and vinyl flooring.

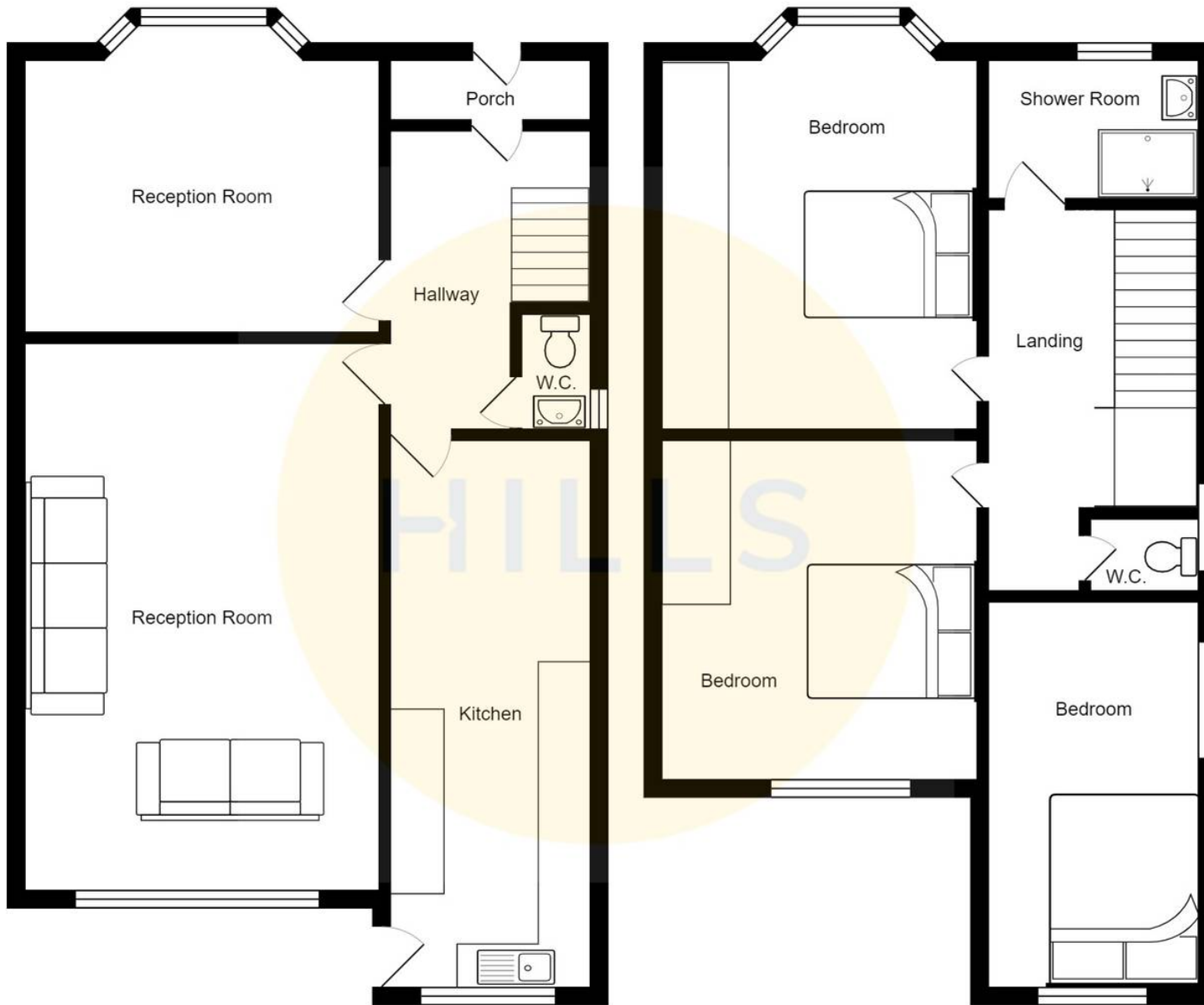
External

To the front and rear of the property is a mature garden, driveway along the side for multiple cars, stretching from the front to the rear of the property with a detached garage.



HILLS







Hills | Salfords Estate Agent

Hills Residential, Sentinel House Albert Street – M30 0SS

0161 707 4900

sales@hills.agency

www.hills.agency/



THE PROPERTY MISDESCRIPTIONS ACT 1991 The Agent has not tested any apparatus, equipment, fixtures and fittings or services and so cannot verify that they are in working order or fit for the purpose. A Buyer is advised to obtain verification from their Solicitor or Surveyor. References to the Tenure of a Property are based on information supplied by the Seller. The Agent has not had sight of the title documents. A Buyer is advised to obtain verification from their Solicitor. You are advised to check the availability of this property before travelling any distance to view. Every effort and precaution has been made to ensure these particulars are correct and not misleading but their accuracy is not guaranteed nor do they form part of any contract. If there is any point which is of particular importance to you, please contact us and we will provide any information you require. This is advisable, particularly if you intend to travel some distance to view the property. The mention of any appliances and services within these details does not imply that they are in full and efficient working order. These particulars are in draft form awaiting Vendors confirmation of their accuracy. These details must therefore be taken as a guide only.