







23 Cedar Square

Alderley Park, Nether Alderley

Exquisite 4-bed Georgian semi in Alderley Park estate boasting luxurious contemporary living. Built by PH Homes in 2019, it offers spacious interiors, landscaped garden, and premium amenities in a historical setting ideal for country living.

Council Tax band: G

Tenure: Leasehold

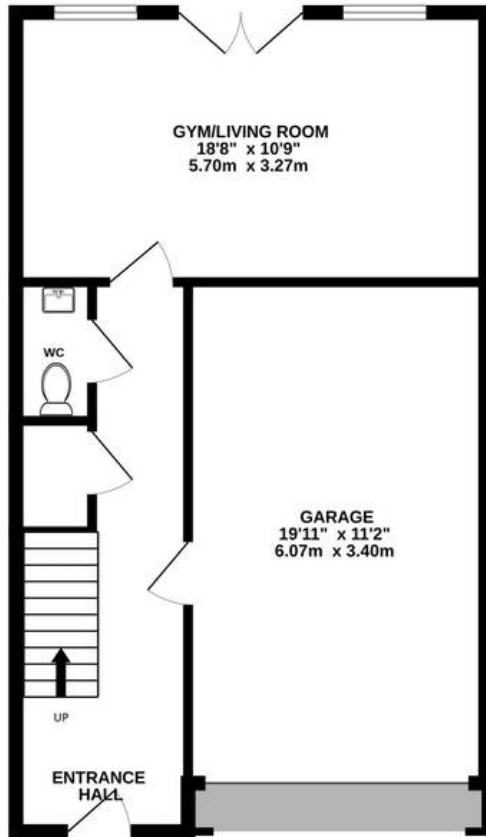
EPC Energy Efficiency Rating: B

EPC Environmental Impact Rating: B

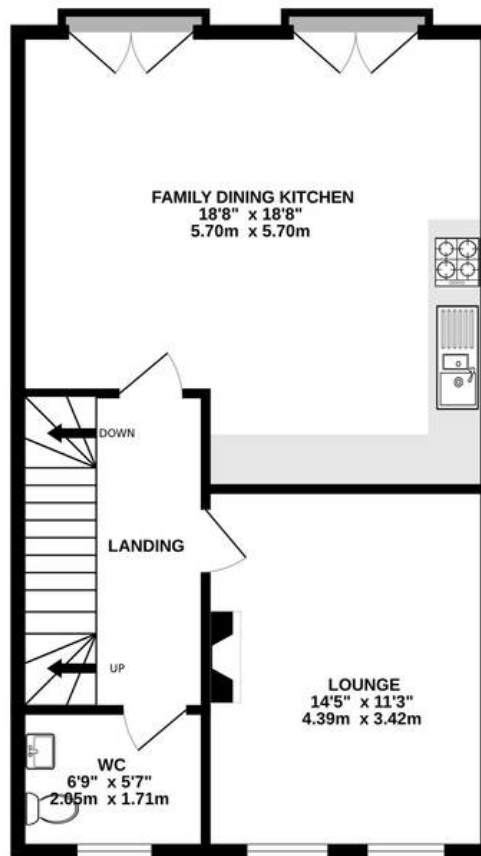
- Beautiful Georgian style property, set over three floors
- Crafted to an impeccable standard by PH Homes in 2019
- Set in the heart of a stunning 400 acre historic country estate
- Incredible estate facilities including leisure and sports club with tennis court and gym



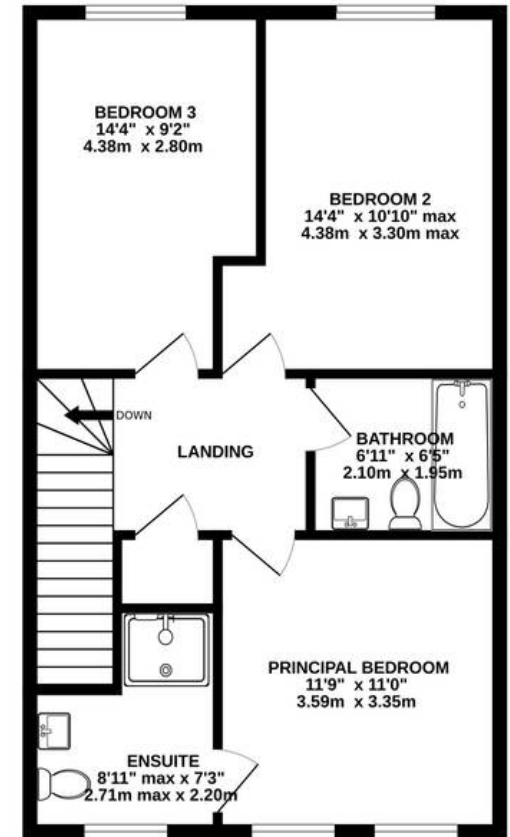
GROUND FLOOR
586 sq.ft. (54.4 sq.m.) approx.



1ST FLOOR
604 sq.ft. (56.1 sq.m.) approx.



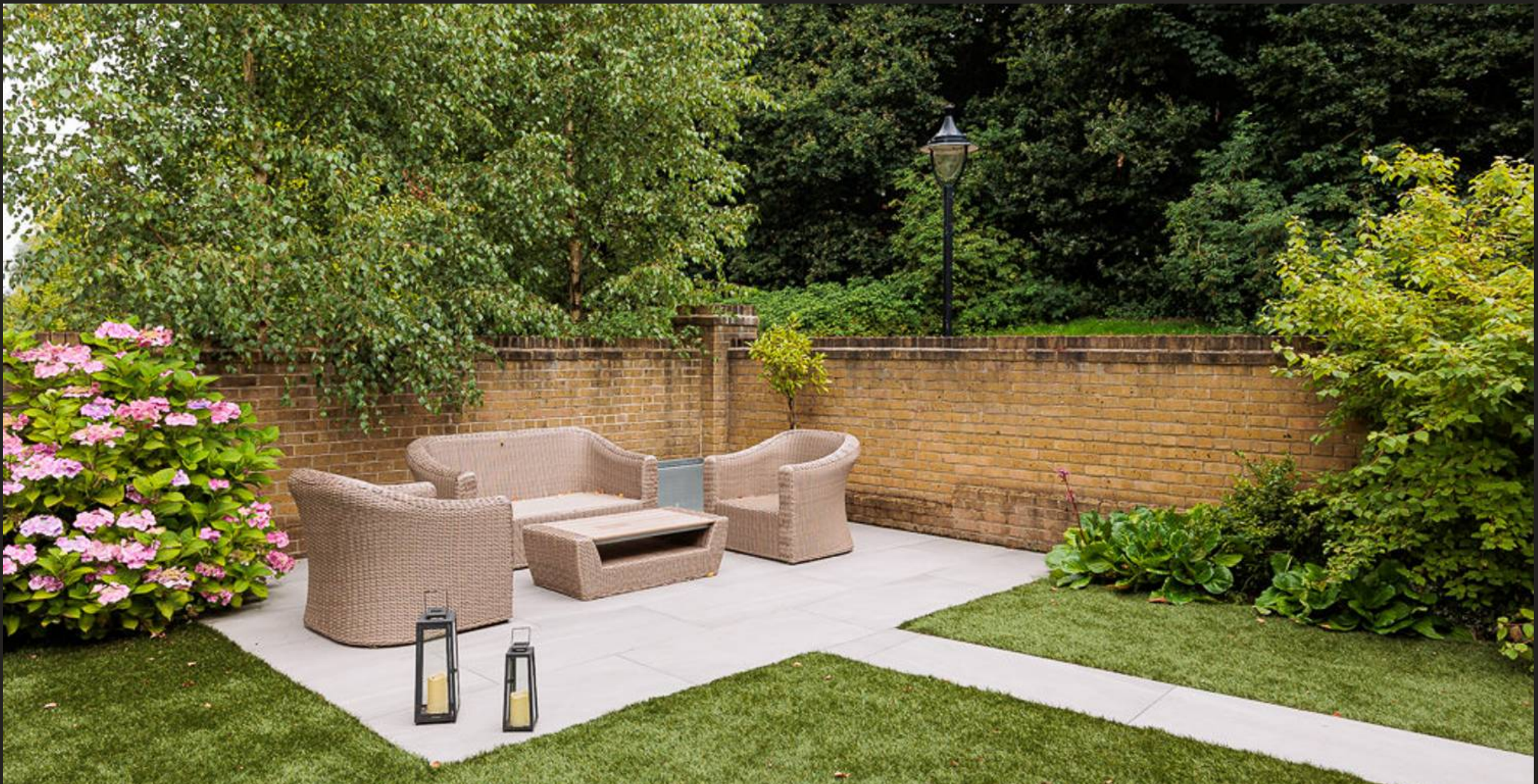
2ND FLOOR
609 sq.ft. (56.5 sq.m.) approx.



TOTAL FLOOR AREA : 1798 sq.ft. (167.1 sq.m.) approx.

Whilst every attempt has been made to ensure the accuracy of the floorplan contained here, measurements of doors, windows, rooms and any other items are approximate and no responsibility is taken for any error, omission or mis-statement. This plan is for illustrative purposes only and should be used as such by any prospective purchaser. The services, systems and appliances shown have not been tested and no guarantee as to their operability or efficiency can be given.

Made with Metropix ©2024



Stuart Rushton & Company

Stuart Rushton & Co, 35 King Street – WA16 6DW

01565 757000

enquiries@srushton.co.uk

www.srushton.co.uk



We are not authorised to make or give any representations or warranties in relation to the property either here or elsewhere. We assume no responsibility for any statement that may be made in these particulars, and they do not form part of any offer or contract and must not be relied upon as statements or representation of fact. Any areas, measurements or distances are approximate. The text, photographs and plans are for guidance only. Importantly, it should not be assumed that the property has all necessary planning, building regulations or other consents and we have not tested any services, equipment or facilities. Purchasers must satisfy themselves by inspection or otherwise.