



3 Manor House Middle Lincombe Road, Torquay - TQ1 2AF
£299,950





3 Manor House, Middle Lincombe Road

Torquay

Unique bungalow-style apartment in prestigious retirement village. Tranquil living space with spacious open plan lounge, modern kitchen, 2 double bedrooms, and elegant shower room/WC. On-site restaurant and concierge service. Stylish, practical one-level living amidst beautifully landscaped grounds.

Council Tax band: D

Tenure: Leasehold

EPC Energy Efficiency Rating: D

- Unique bungalow style retirement apartment
- Spacious open plan lounge/dining room
- Quality modern fitted kitchen with integrated appliances and solid worktops
- Two double bedrooms
- Shower room/WC
- Prestigious retirement village
- Concierge service and restaurant
- One level living
- Beautifully landscaped communal grounds
- Finished to a high specification



3 Manor House Middle Lincombe Road

Torquay

The retirement village is situated in Middle Lincombe Road, perfectly located for Wellswood with its range of amenities including shops, restaurants, Post Office and the Parish Church of St Matthias. Meadfoot Beach is close by and gives access to the South West Coastal path. Torquay offers a pleasant environment for seaside living, with excellent opportunities for sporting and leisure pursuits, shopping and dining. Communication links include a rail link to the inter-city network at Newton Abbot and the South Devon Highway, bypassing the village of Kingskerswell, improving journey time to Exeter and the M5 motorway.

Absolute Sales & Lettings

Absolute Sales & Lettings Ltd, 13 Ilsham Road - TQ1 2JG

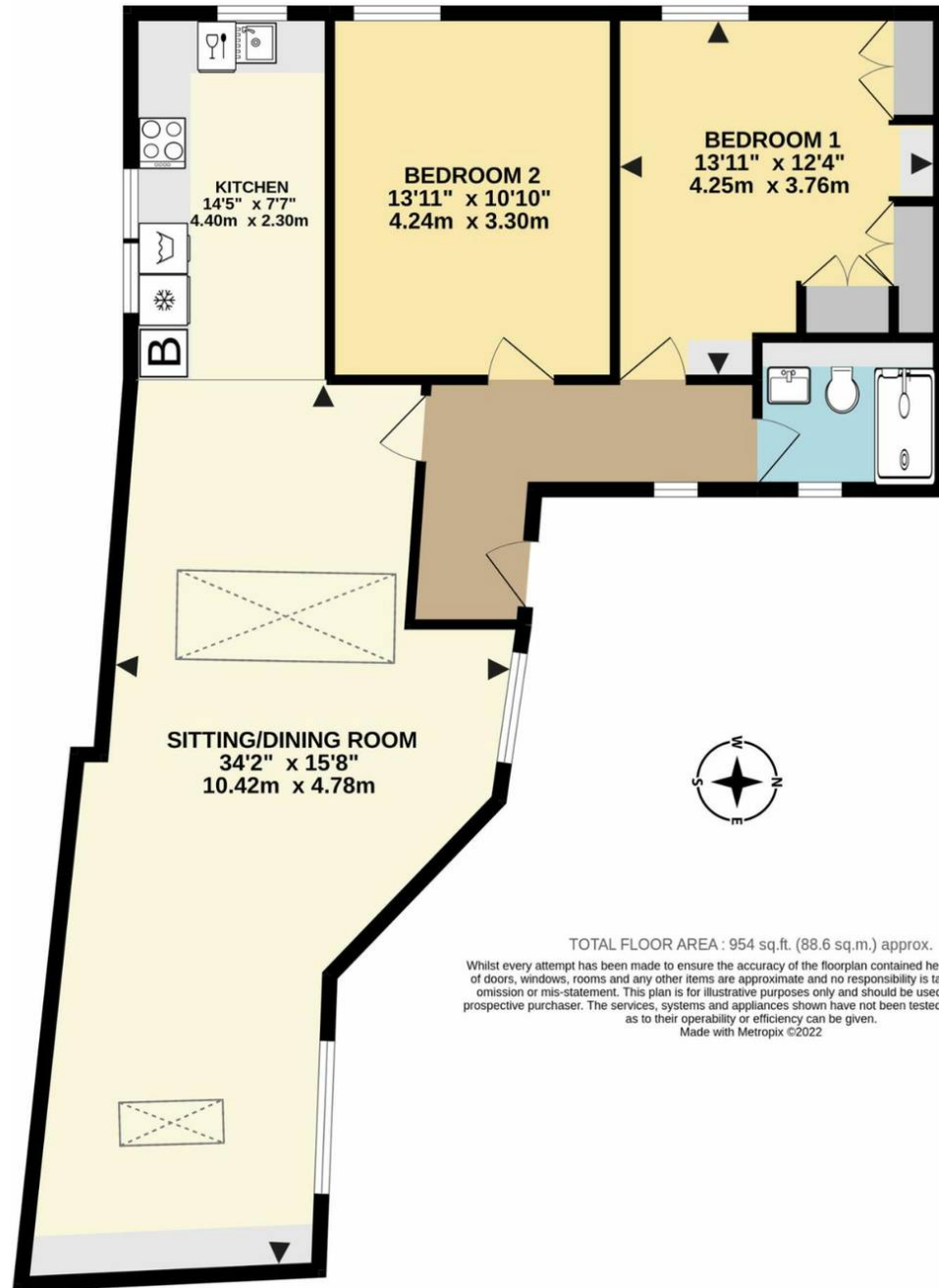
01803 214214

torquay@movewithabsolute.co.uk

movewithabsolute.co.uk/



COACH HOUSE
954 sq.ft. (88.6 sq.m.) approx.



TOTAL FLOOR AREA : 954 sq.ft. (88.6 sq.m.) approx.

Whilst every attempt has been made to ensure the accuracy of the floorplan contained here, measurements of doors, windows, rooms and any other items are approximate and no responsibility is taken for any error, omission or mis-statement. This plan is for illustrative purposes only and should be used as such by any prospective purchaser. The services, systems and appliances shown have not been tested and no guarantee as to their operability or efficiency can be given.
Made with Metropix ©2022

