



Sylvan, Manor Road, Penn



Ashington Page



Sylvan is a 5-bedroom detached home approaching 2800 square feet in a peaceful setting off a drive of just 3 houses off the prestigious and private Manor Road. Beautifully presented and with a great space for al fresco entertaining and dining. No chain.

The ground floor comprises three reception rooms, each thoughtfully designed to cater to modern living and entertaining needs. The spacious layout allows for flexibility in how you choose to utilise the space, whether it be for hosting guests or enjoying quiet family evenings. The formal living room has a gas fire with stone mantle, whilst the large family/dining room offers wonderful views and access to the terraces and gardens. The third reception is currently used as an office.

The kitchen is equipped with high-end appliances and has ample storage and granite countertop space and there is an adjacent utility room with a door for side access.

Upstairs, the property offers five generously-sized bedrooms. The master suite is a lovely space with an en-suite bathroom and ample closet space.

The landscaped garden is an outdoor oasis, offering a tranquil escape from the hustle and bustle of every-day life. Whether you enjoy gardening or simply appreciate the beauty of nature, this garden is sure to delight all who visit and features a stunning terrace which offers the perfect spot to enjoy the serene surroundings. A large detached garage and store provide ample storage space.





Sylvan is being offered with no onward chain, presenting an opportunity to purchase without delay. With its prime location and beautiful presentation this is home truly stands out from the rest, whilst offering further potential to extend and remodel, subject to all necessary consents. Previous plans are available on request.

Manor Road is an exclusive private road near Penn village, with Beaconsfield only 10 minutes away. It offers easy access to both Beaconsfield and High Wycombe railway stations for swift access to London, and is in an ideal location for excellent state and private schools from 4-18 years.

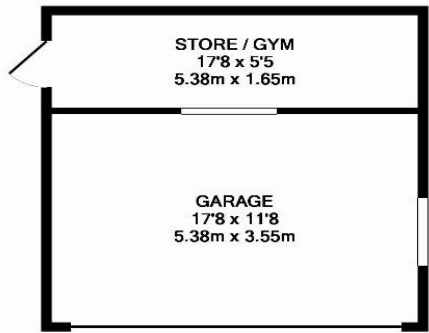
Sat Nav: HP10 8JA

EPC: C

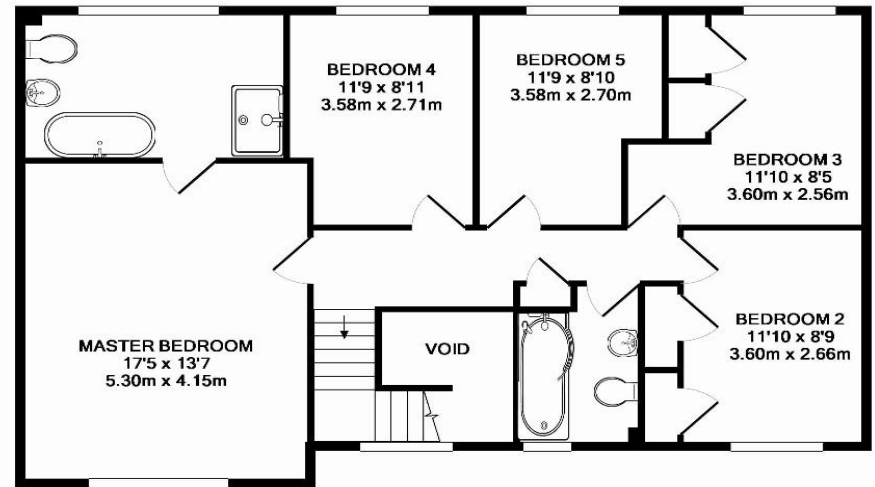
Council Tax: G

Freehold

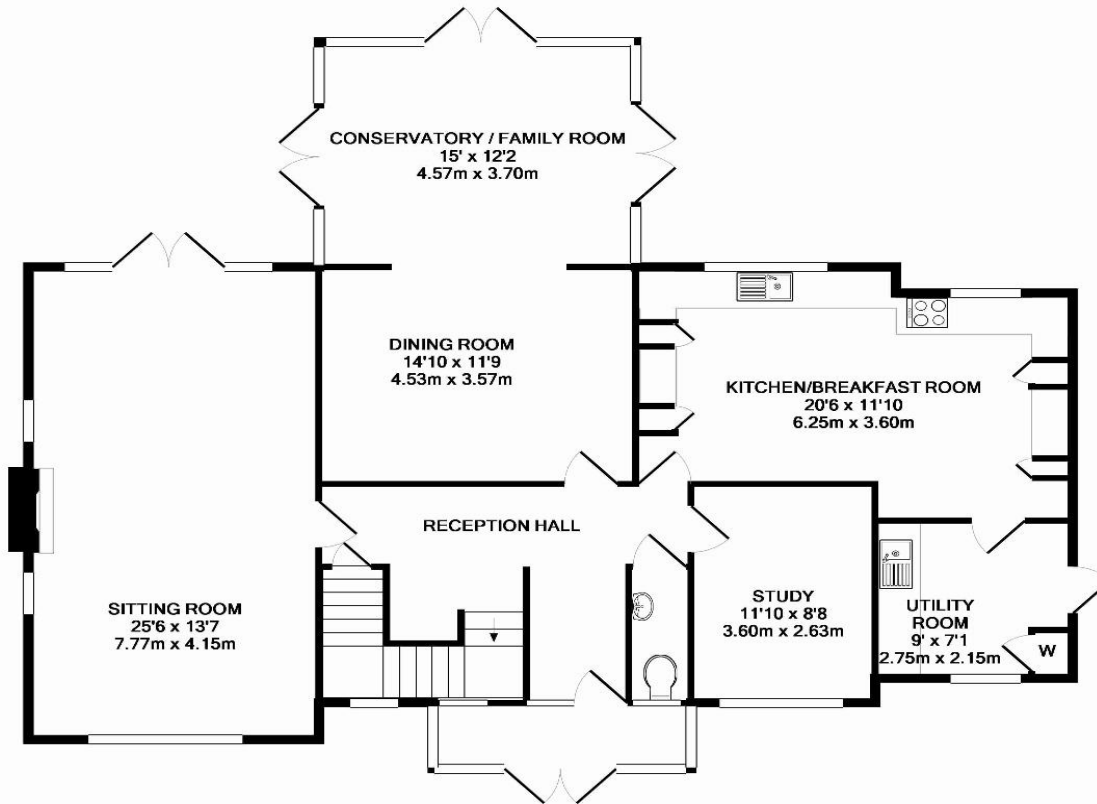




GARAGE



1ST FLOOR



GROUND FLOOR

TOTAL APPROX. FLOOR AREA 2745 SQ.FT. (255.0 SQ.M.)

Whilst every attempt has been made to ensure the accuracy of the floor plan contained here, measurements of doors, windows, rooms and any other items are approximate and no responsibility is taken for any error, omission, or mis-statement. This plan is for illustrative purposes only and should be used as such by any prospective purchaser. The services, systems and appliances shown have not been tested and no guarantee as to their operability or efficiency can be given.

Made with Metropix ©2014





For an appointment to view this property, please contact Ashington Page on **01494 680 018**
Email info@ashingtonpage.co.uk



Should you decide to use James Walton, Park Grove Mortgages Limited, you should know that we would normally receive a referral fee from him on completion of a transaction. An average referral fee is typically

Important Notice: These particulars are for guidance only. They are prepared and issued in good faith and are intended to give a fair summary of the property. Any description or information should not be relied on as a statement or representation of fact or that the property or its services are in good condition. The photographs show only certain parts of the property at the time they were taken. Any areas, measurements or distance given are approximate only. Any reference to alterations to or use of, any part of the property is not a statement that any necessary planning, building regulations or other consent has been obtained. These matters must be verified by an intending purchaser. All statements contained in these particulars in relation to the property are made without responsibility of Ashington page or its clients. Neither Ashington Page (nor any joint agents) nor any of their employees has any authority to make or give any representation or warranty whatsoever in relation to the property.

www.AshingtonPage.co.uk

Ashington Page