



La Brianderie La Route De St. Jean, St. Lawrence

Asking Price **£1,350,000**

BROADLANDS

FINDING YOU A HOME SINCE 1972

La Brianderie La Route De St. Jean

St. Lawrence, Jersey

- Detached house 3 bedroom/2 bathroom and separate one bedroom flat.
- For further information, please contact Roger Trower roger@broadlandsjersey.com or Harry Trower harry@broadlandsjersey.com
- Joint Sole Agents

A modern, detached, dormer bungalow dating back to some 40 years, that would benefit from some modest refurbishment and modernisation. The property includes an integral 1 bedroom flat.

Location

The property is located at the northern end of La Route de St Jean, just half a mile after Rozel Rovers Football Club when driving north and at the road junction with Les Charrieres Nicolle. The property is situated in a cluster of residential properties with the existing industrial warehouses in a rural location but being about only 10 mins drive from St Helier.





Description

The substantial detached property appears to be of traditional masonry construction with a painted cement render and a pitched tile roof. The main house comprises 3 bedrooms/2 bathrooms, with a large lounge, south facing conservatory, both overlooking a private garden. There is a single integral garage. Additionally, there is a separate flat which comprises open living plan accommodation, one bedroom, bathroom and parking. The water is connected to a bore hole and we believe it would be possible to connect to mains drains. Oil fired central heating.

Accommodation

Main house Ground floor – Hallway, wc, dining room, kitchen, utility room, conservatory, living room, double bedroom with ensuite, integral garage First floor – Double bedroom, Double bedroom, bathroom and storage in the eaves. Flat Ground floor – open living plan accommodation, one bedroom, bathroom and with parking.

Tenure

The residential flat is rented out on a monthly rolling contract.

Asking Price

The opportunity exists to acquire the freehold interest of the property, subject to the above noted leases, for a consideration over £1,350,000 exclusive of GST as applicable.

Legal costs

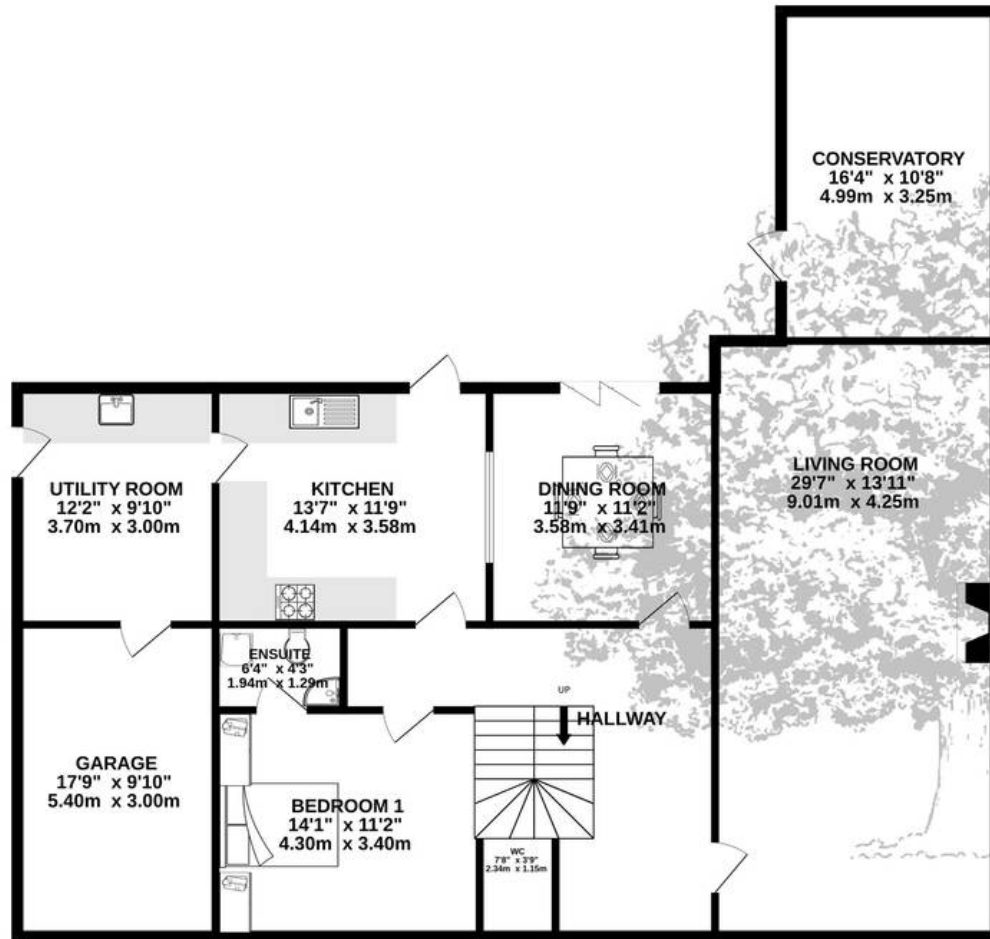
Each party to bear their own legal costs and any other cost incurred in the sale of this property.

Viewing

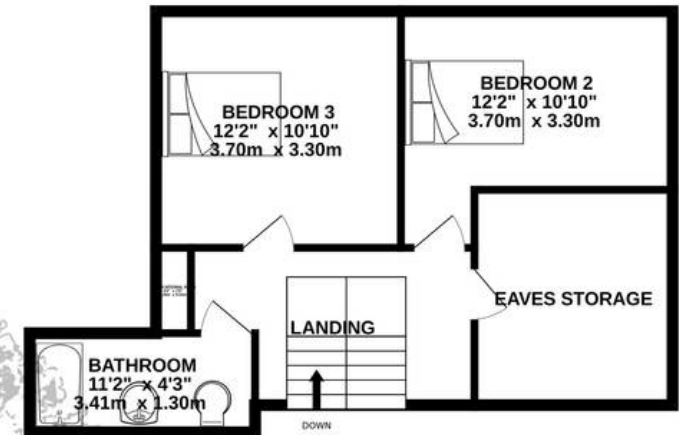
Strictly by appointment with the Vendor's Joint sole agents.
Harry Trower Director T. +44 (0)1534 880770 M. +44 (0)7797751587 harry@broadlandsjersey.com
www.broadlandsjersey.com Roger Trower CEO T. +44 (0)1534 880770 M. +44 (0)7797 711194 roger@broadlandsjersey.com
www.broadlandsjersey.com



GROUND FLOOR
1523 sq.ft. (141.5 sq.m.) approx.



1ST FLOOR
539 sq.ft. (50.1 sq.m.) approx.



TOTAL FLOOR AREA : 2062 sq.ft. (191.6 sq.m.) approx.

Whilst every attempt has been made to ensure the accuracy of the floorplan contained here, measurements of doors, windows, rooms and any other items are approximate and no responsibility is taken for any error, omission or mis-statement. This plan is for illustrative purposes only and should be used as such by any prospective purchaser. The services, systems and appliances shown have not been tested and no guarantee as to their operability or efficiency can be given.



Broadlands

Broadlands Estates, Library Place - JE2 3NL

01534 880770 • enquiries@broadlandsjersey.com • www.broadlandsjersey.com/

BROADLANDS

FINDING YOU A HOME SINCE 1972