



MILE



Hillside, London £375,000 Leasehold

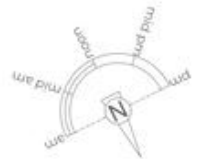
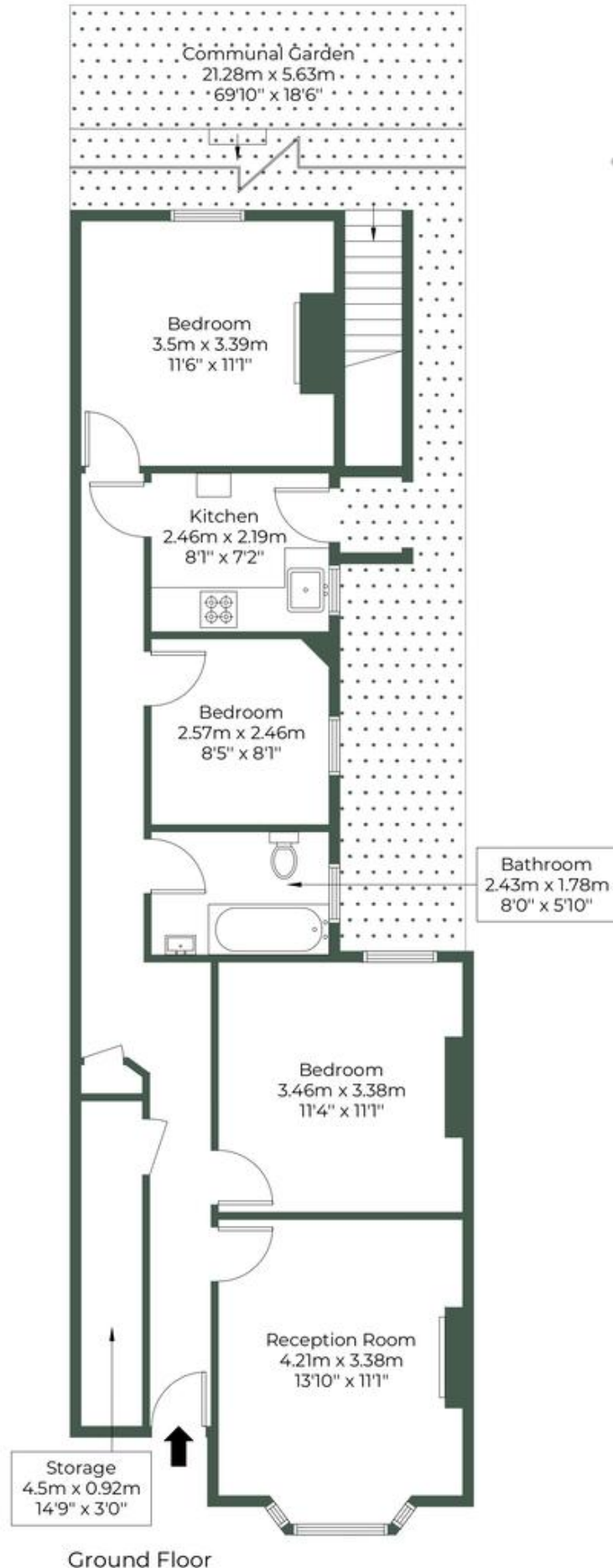
An appealing outside space provides a perfect spot for relaxation and outdoor activities, while ample natural light enhances the bright and welcoming ambiance throughout. Situated close to local shops and amenities, daily errands are a breeze.

With close proximity to the North Circular, commuting is made easy, adding to the property's appeal. This flat presents a fantastic rental opportunity for landlords, combining location and comfort in one attractive package. Don't miss out on this gem – a perfect blend of convenience and charm.

- **3 Bedrooms**
- **Outside space**
- **Spacious**
- **Own entrance**
- **Ground floor flat**
- **Close to local shops and amenities**
- **Close proximity to the North Circular**
- **Good rental opportunity for landlords**
- **Good condition**
- **Natural Light**

HILLSIDE, NW10 8LJ

Approximate Gross Internal Area = 73.2 sq.m / 788 sq.ft



MONEY LAUNDERING REGULATIONS 2003: Intending purchasers will be asked to produce identification documentation at a later stage and we would ask for your co-operation in order that there will be no delay in agreeing the sale.

General: While we endeavour to make our sales particulars fair, accurate and reliable, they are only a general guide to the property and, accordingly, if there is any point which is of particular importance to you, please contact the office and we will be pleased to check the position for you, especially if you are contemplating travelling some distance to view the property.

Measurements: These approximate room sizes are only intended as general guidance. You must verify the dimensions carefully before ordering carpets or any built-in furniture.

Services: Please note we have not tested the services or any of the equipment or appliances in this property, accordingly we strongly advise prospective buyers to commission their own survey or service reports before finalising their offer to purchase.