


Complete Property Services Property Brochure

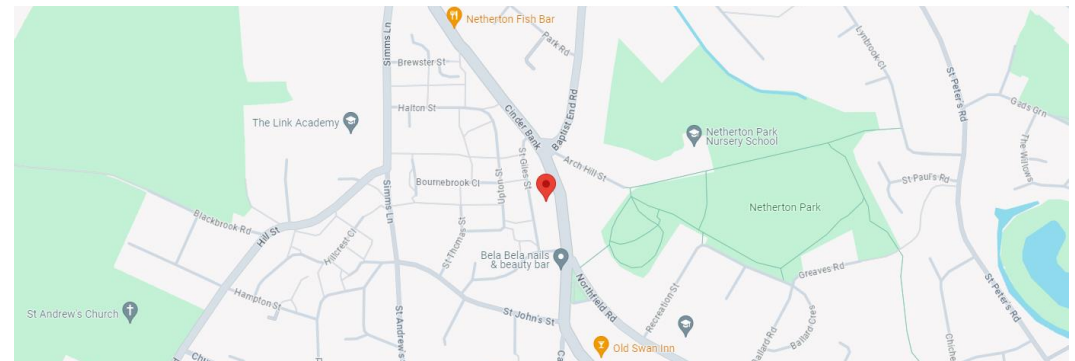
Key information for renters



Halesowen Road, Netherton

 DY2 9QA

 £650.00pcm



Page 1: Overview

Pages 2-5: Photos

Page 6: Map & Nearby

Page 7: EPC & Floor Plan

Key Facts



Property Type

Second-Floor Flat



Bedrooms

1



Bathrooms

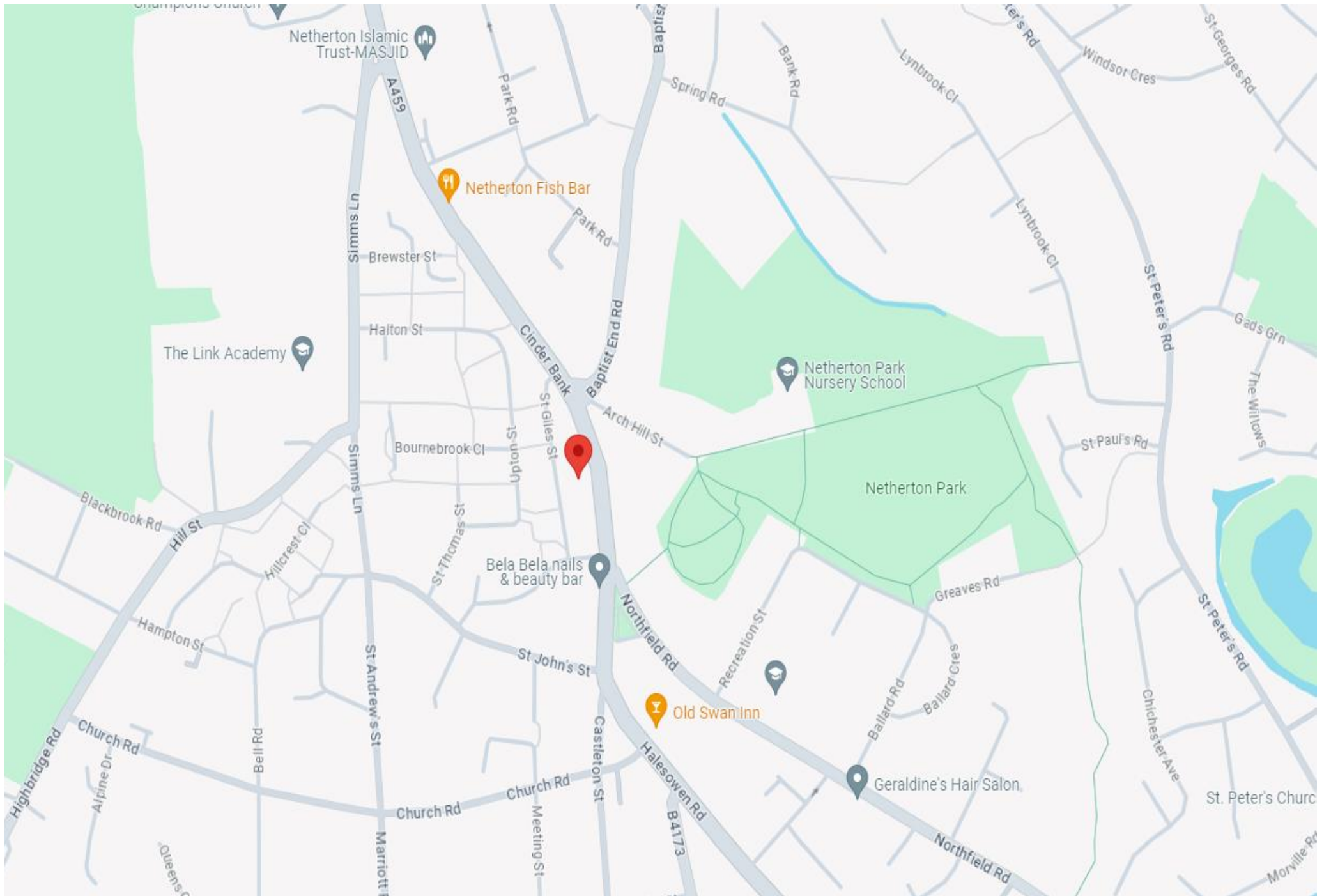
1













Halesowen Road, Netherton, DY2 9QA
(37sq m / 398sq ft)

Energy rating and score

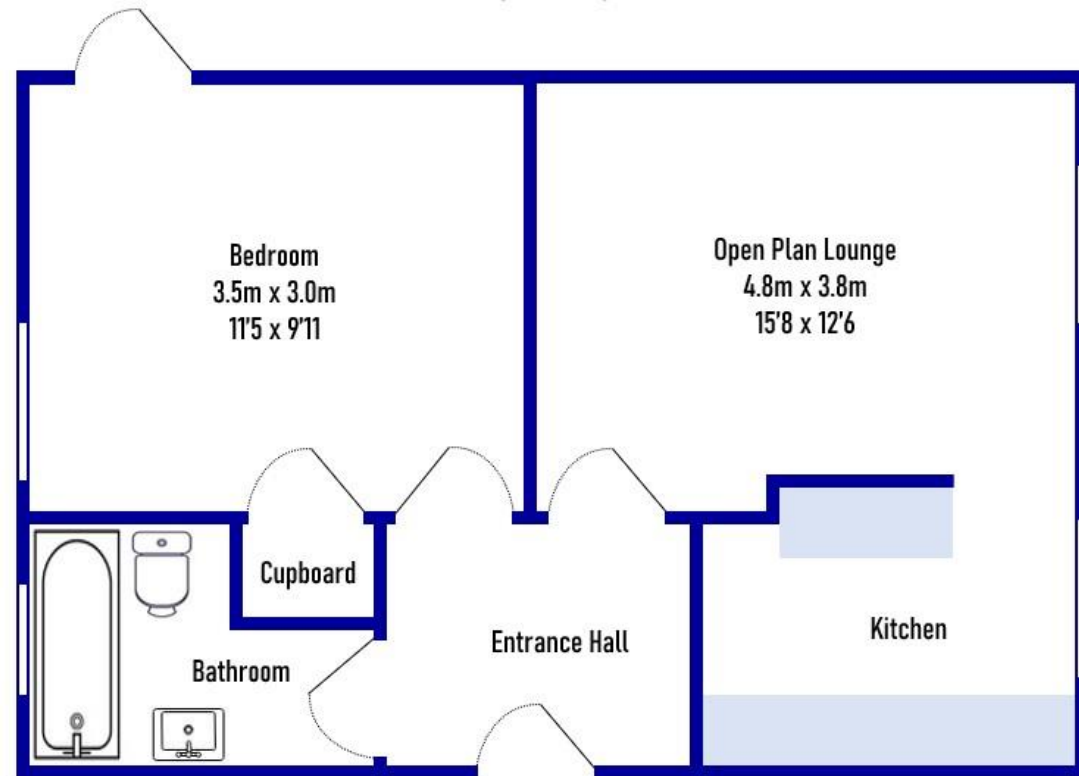
This property's energy rating is D. It has the potential to be D.

[See how to improve this property's energy efficiency.](#)

Score	Energy rating	Current	Potential
92+	A		
81-91	B		
69-80	C		
55-68	D	55 D	68 D
39-54	E		
21-38	F		
1-20	G		

The graph shows this property's current and potential energy rating.

Properties get a rating from A (best) to G (worst) and a score. The better the rating and score, the lower your energy bills are likely to be.



Second Floor
(37sq m / 398sq ft)

Whilst every attempt has been made by Complete Property Services to ensure the accuracy of the floorplan contained here, measurements of doors, windows, rooms and any other items are approximate, and no responsibility is taken for any error, omission or mis-statement. The services, systems and appliances shown have not been tested and no guarantee as to their operability or efficiency can be given.