



PERIOD
HOMES

Primrose Hill, Chelmsford. CM1 2RH

Guide Price £375,000 - £400,000

Primrose Hill

Chelmsford, CM1 2RH

GUIDE PRICE: £375,000 - £400,000. Welcome to this three-bedroom end terraced property, nestled within the heart of Chelmsford's City Centre and conveniently positioned 0.4 miles away from the Station.

Council Tax band: C

Tenure: Freehold

EPC Energy Efficiency Rating: D

EPC Environmental Impact Rating: D

- NO ONWARD CHAIN
- JUST 0.4 MILES FROM CHELMSFORD MAINLINE RAILWAY
- IN THE HEART OF CHELMSFORD CITY CENTRE
- RESIDENTS PARKING PERMIT





Primrose Hill

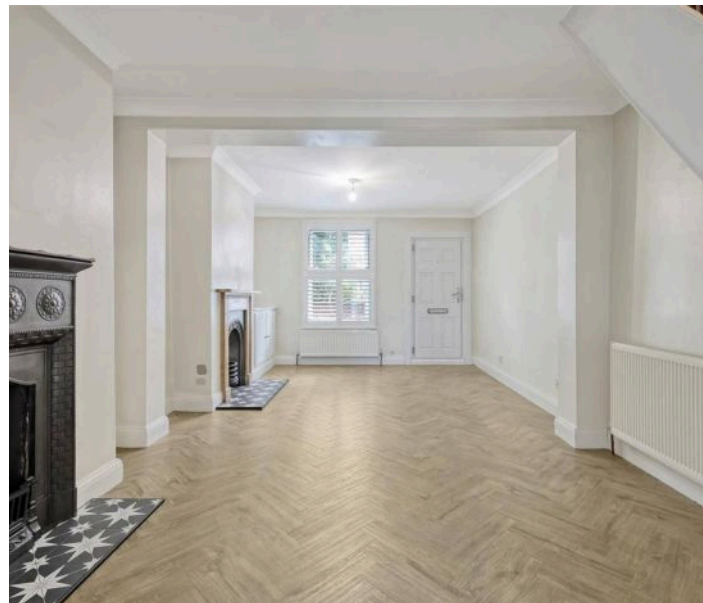
Chelmsford, CM1 2RH

GUIDE PRICE: £375,000 - £400,000

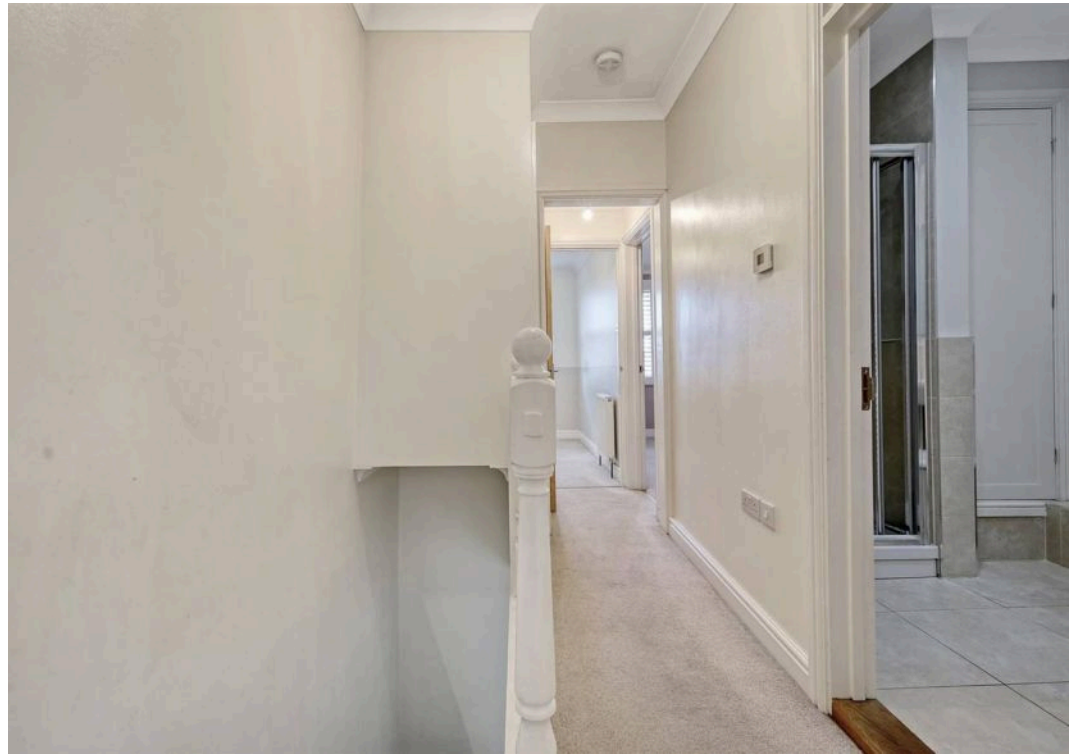
Welcome to this three-bedroom end terraced property, nestled within the heart of Chelmsford's City Centre and conveniently positioned just 0.4 miles away from the Mainline Railway Station. The shallow front garden has a welcoming brickwork and a rose bush. As you step inside this Victorian gem, you'll be captivated by its charm and character that this extended home offers. The lounge/diner welcomes you with two fireplaces, enhanced by mellow herringbone effect Amtico flooring. Throughout the property, you'll discover the allure of classic sash windows with shutters, allowing for an abundance of natural light to filter through. The well-appointed kitchen, with a pull-out larder and integrated dishwasher, offers seamless access to the garden through patio doors.

The principle bedroom, finished with fitted wardrobes and a striking fireplace, creates a tranquil retreat. The second and third bedrooms also offer practical storage solutions with their own storage cupboards, making the most of every inch of space. The well-appointed bathroom comprises of a panelled bath, shower cubicle, basin, WC and benefits from underfloor heating.

Beyond its charming interior, this property enjoys a delightful outdoor space. It has an ideal space for alfresco dining on the patio, plus a large lawn area. In addition, the garden offers side pedestrian access. To the front of the property,

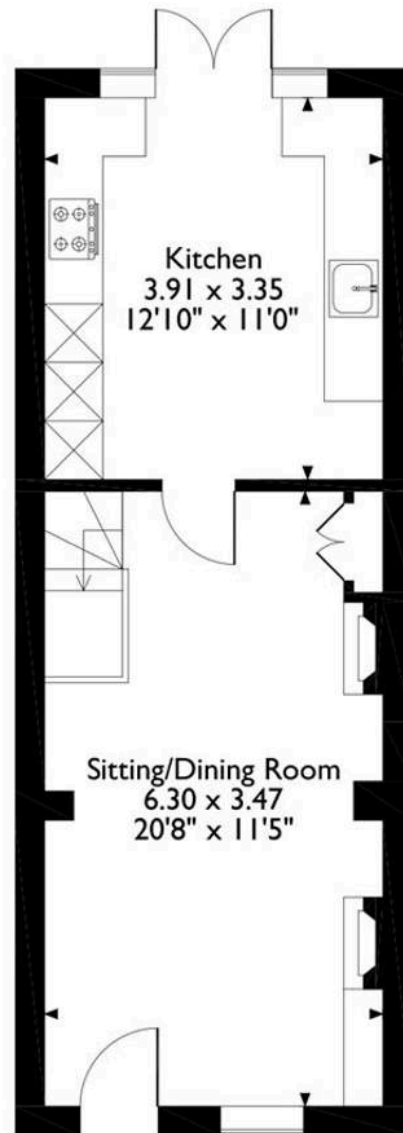




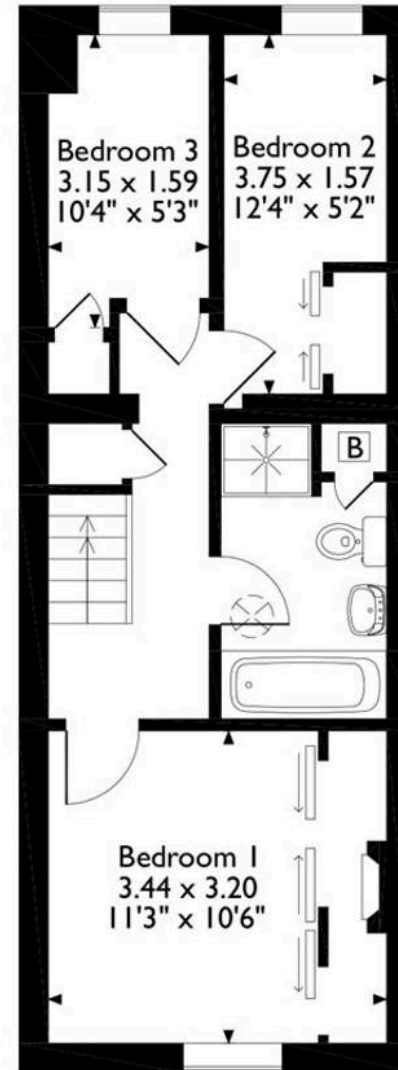




Primrose Hill, Chelmsford, Essex
Approximate Gross Internal Area
72 Sq M/776 Sq Ft



Ground Floor



First Floor

Please note that the location of doors, windows and other items are approximate and this floorplan is to be used for illustrative purposes only. Unauthorized reproduction is prohibited.

About Us

From charming cottages to country estates, all our homes have a story to tell. 'Period Homes' is one of a kind, an agency dedicated to the sale of character and period properties across Essex.

If you would like to buy a period home but you have a modern home to sell first, we can assist via our sister company, Walkers, which just so happens to have been voted Britain's Best Estate Agency in the British Property Awards. That way, both elements of your move are in the very best of hands.

Get In Touch



Browse Properties



PERIOD
HOMES

Pst... Have you heard of
discreet marketing?

Many people lose out on their dream home to someone in a better position.

Often, it is because they have delayed putting their house on the market, preferring to find somewhere first and then sell.

That is why we have innovated a totally unique and high confidential moving home solution to put you in a competitive position.

Let us find you a buyer without any advertising or pressure and without the neighbours knowing.

Your secret is safe with us...

Get in touch for a
complimentary valuation.

Looking To Sell Or Let Your Home?

Book your free valuation to see how much your home is worth.

Contact Us

01277 288000



Our Website

periodhomes.co.uk



Our Address

Eaton House

High Street

Ingestone

CM4 9DW

