

MARTYN COX
— & COMPANY —



The Cottage, Green Lane, North Leigh OX29 6TW

The Cottage, Green Lane,

North Leigh, Witney OX29 6TW.

A charming two bedroom terraced cottage in a popular village setting, close to lovely countryside walks and available with no onward chain.

The cottage comprises entrance porch, sitting room with ceiling beams and a wood burning stove, kitchen, porch (accessing Green Lane), bathroom and two bedrooms. Gas central heating, southerly facing garden and an off road parking space accessed from New Yatt Road.

North Leigh is within easy reach of Witney, Oxford, Woodstock and Hanborough train station. There is a primary school, memorial hall/post office/library and two public houses. The village combines an attractive mixture of modern and older property and is an active and thriving community.

Council Tax band: D. Tenure: Freehold

EPC Energy Efficiency Rating: D

- Character two bedroom cottage
- Available with no onward chain
- Sitting room with wood burning stove
- Kitchen & bathroom
- Southerly facing garden
- Off road parking space





The Cottage

Approximate Gross Internal Area = 58.4 sq m / 629 sq ft

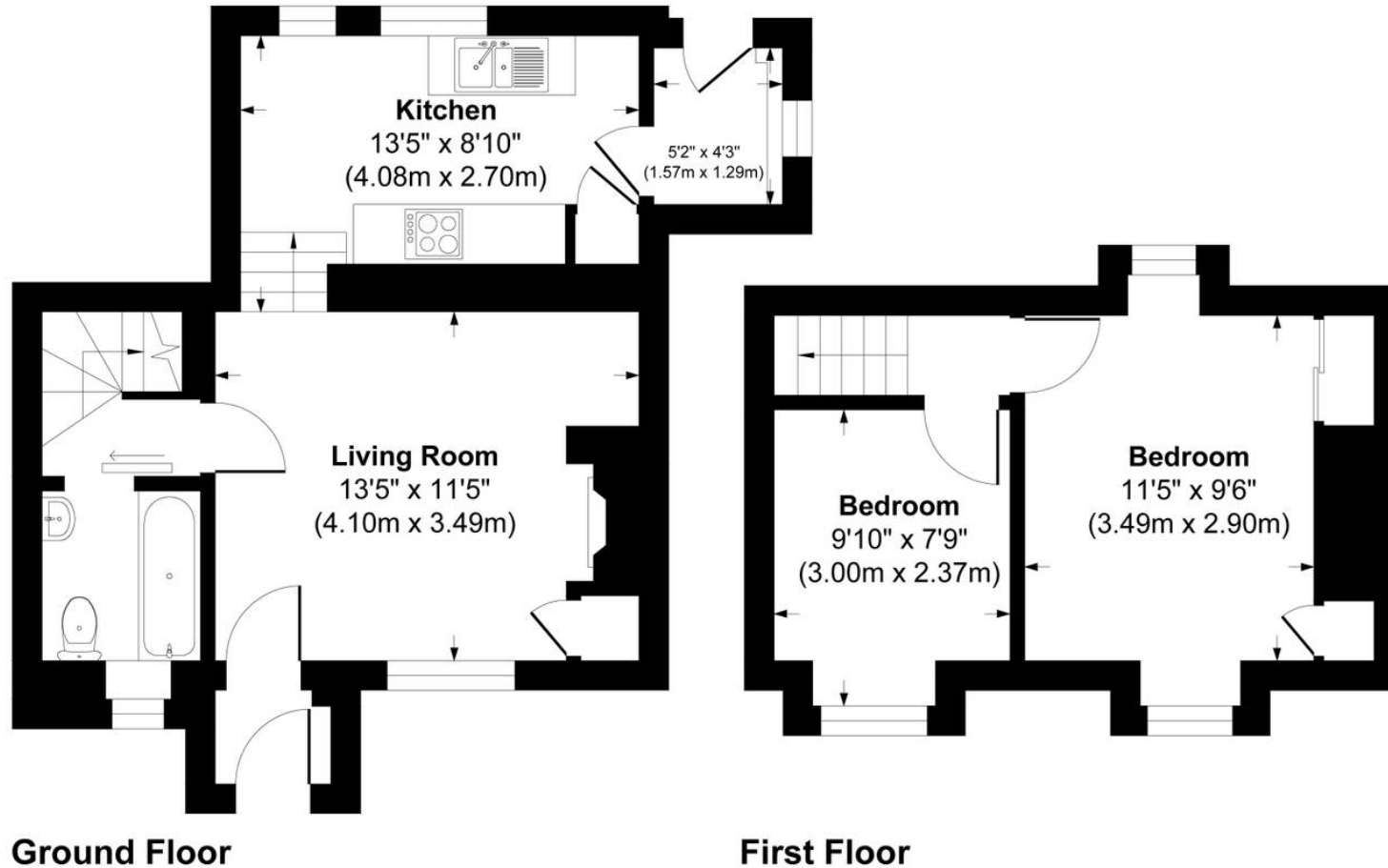


Illustration for identification purpose only, measurements approximate, and not to scale.

Martyn Cox & Company

6-8 Corn Street, Witney - OX28 6BL

01993 779020 • property@martyncox.com • www.martyncox.com



These particulars are approximate and for illustrative purposes only. They have been prepared in good faith and not intended to be part of an offer or contract. We have not carried out a structural survey and the services, appliances and fittings have not been tested. photos, measurements, floor plans, distances, lease details, services charges and ground rent are given as a guide only.