



Flat 2, Windrush Court, 67 St. Marys Mead – OX28 4FD

Witney

Flat 2

Windrush Court, Witney OX28 4FD.

A modern one bedroom ground floor retirement flat enjoying a convenient location close to the town centre amenities and available with no onward chain.

The flat comprises entrance hall, a sitting/dining room with French doors opening to communal gardens, and an archway accesses the kitchen. The double bedroom has a built in wardrobe, there is a bathroom, electric heating and double glazing.

There are many benefits to provide peace of mind retirement living, which include a site manager, residents lounge, laundry, guest suite, residents car park and communal maintained gardens.

TENURE: Leasehold. 125 years from 1988.

SERVICE CHARGE: £ 2,377.78 per annum.

GROUND RENT: £ 492.34 per annum.

COUNCIL TAX: Band C

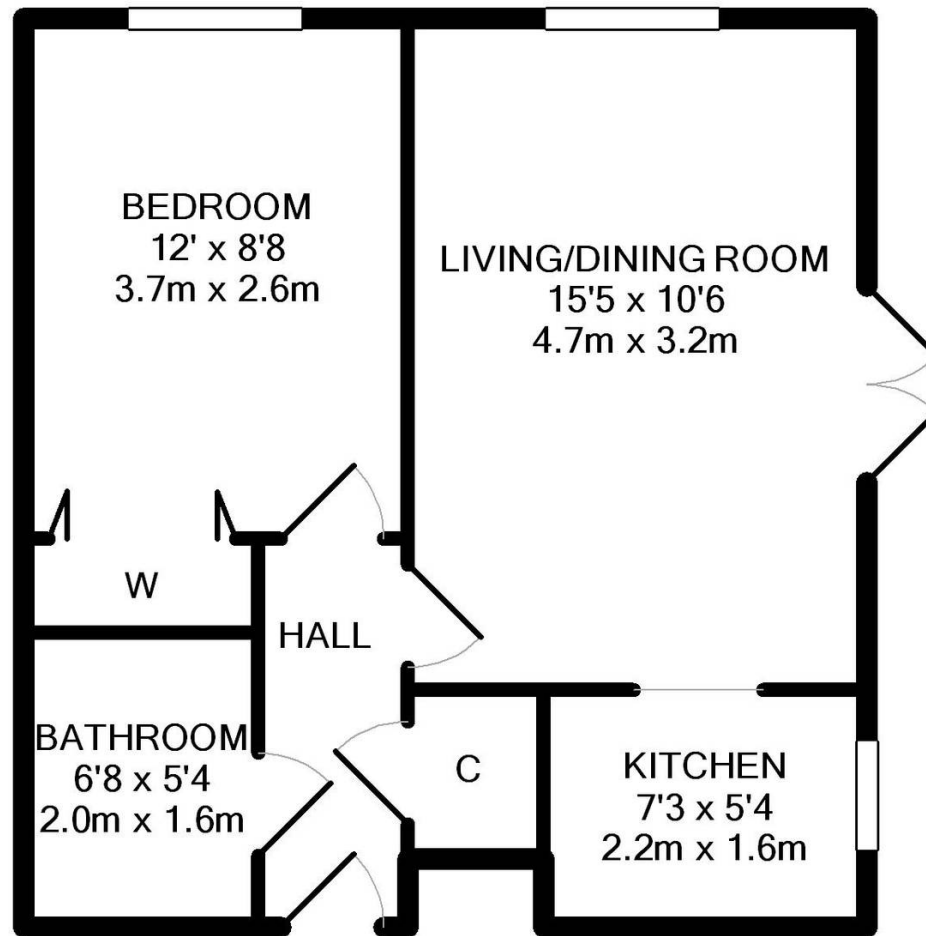
Note: The property is within Witney Conservation Area.

We understand residents must be over the age of 60 years.

EPC Rating: D







TOTAL APPROX. FLOOR AREA 399 SQ.FT. (37.1 SQ.M.)
 Made with Metropix ©2019

Martyn Cox & Company

6-8 Corn Street, Witney - OX28 6BL

01993 779020 • property@martyncox.com • www.martyncox.com



These particulars are approximate and for illustrative purposes only. They have been prepared in good faith and not intended to be part of an offer or contract. We have not carried out a structural survey and the services, appliances and fittings have not been tested. photos, measurements, floor plans, distances, lease details, services charges and ground rent are given as a guide only.