



Churchill Way, Long Hanborough

54 Churchill Way

Long Hanborough OX29 8JL

£425,000

Guide Price



Nicely positioned in the heart of this desirable village with its range of shops and mainline rail link to London/Paddington sits this delightful chalet bungalow. Light-filled living space across two floors includes a modern, well-appointed kitchen with integrated appliances which opens to a good size dining area offering plenty of space for family meals. The useful utility provides access to both the garage and garden. A dual aspect sitting room enjoys a feature fireplace which sets the scene for relaxing and patio doors open out to the delightful garden. The ground floor shower room offers the opportunity to utilise the snug/office as a bedroom if so desired. To the first floor the principal bedroom has good ceiling height, built-in storage plus eaves space. The second bedroom would make a good study/office and both rooms are well-served by the modern shower room.

Set with low-maintenance in mind the garden affords a high degree of privacy with both gravel and paved seating areas to capture the sun throughout the day. Mature plants, shrubs and trees enhance this well-tended outdoor space. The garage and additional driveway parking complete this superb home.

Agent's Comment

"A wonderful opportunity to enjoy village life at its very best, an appointment to view is highly recommended to fully appreciate all this lovely house has to offer. "

 2/3

 2/3

 2



IMPORTANT NOTICE: These particulars are for information purposes only and do not in whole or in part constitute or form part of any offer or contract, nor should any statement obtained herein be relied upon as a statement or representation of fact. Breckon & Breckon do not test whether the services connected to the property, heating systems and domestic appliances are in working order. We therefore recommend that the purchaser obtains verification from their surveyor or solicitor. Whilst every attempt has been made to ensure the accuracy of the floor plans contained here, measurements of doors, windows and rooms are approximate and no responsibility is taken for any error, omission or mis-statement. These plans are for representation purposes only as defined by the RICS code of measuring practice and should be used as such by any possible purchaser.

54 Churchill Way

Approximate Gross Internal Area = 133.3 sq m / 1435 sq ft
(Including Garage)

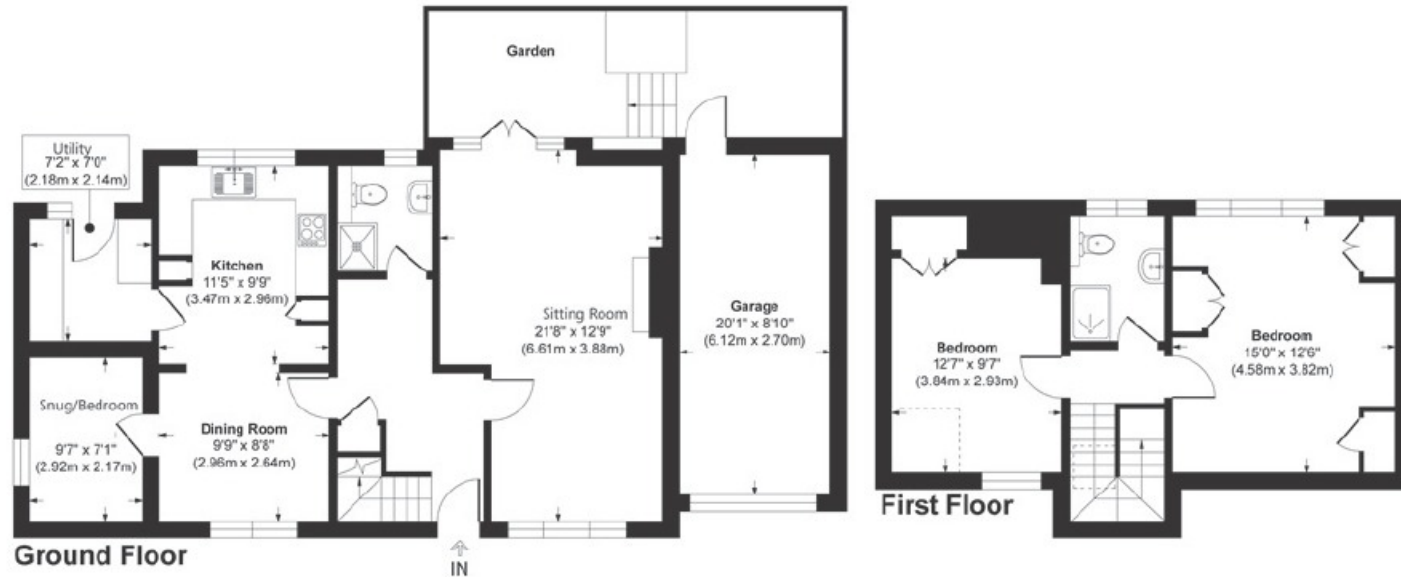


Illustration for identification purpose only, measurements approximate, and not to scale.

Breckon & Breckon

est. 1947

Witney

01993 776 775

10 Market Square

Witney, Oxfordshire

OX28 6BB

witney@breckon.co.uk

breckon.co.uk



Oxford city centre

Tel: 01865 244735 (sales)
Tel: 01865 201111 (letting)

Summertown

Tel: 01865 310300 (sales)
Tel: 01865 558999 (apartments)

Headington

Tel: 01865 750200 (sales)
Tel: 01865 763999 (letting)

Abingdon

Tel: 01235 550 550 (sales)
Tel: 01235 554 040 (letting)

Woodstock

Tel: 01993 811881 (sales)
Tel: 01993 810100 (letting)

Witney

Tel: 01993 776775 (sales)
Tel: 01865 201111 (letting)



Council Tax Band:

Band D - £2,289.12

Local Authority:

West Oxfordshire District Council

