



mcfarlane

**Barra Close, Highworth - SN6 7HX**

Highworth

In Excess of **£390,000**

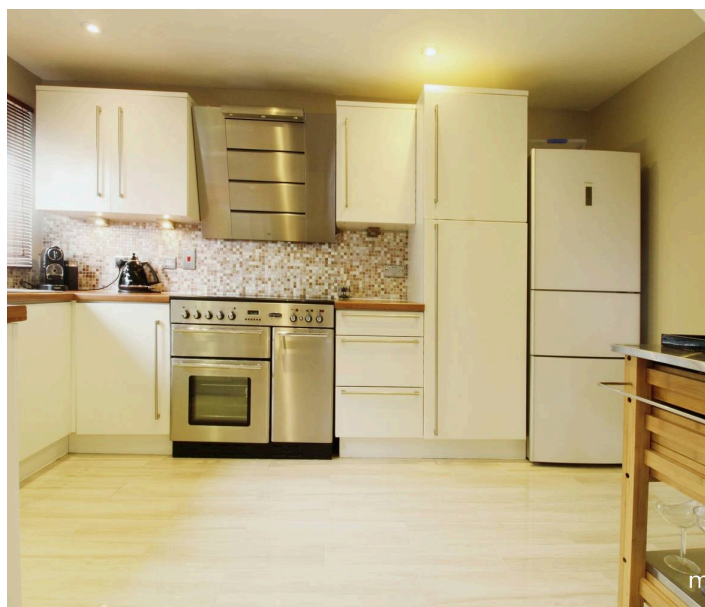
**mcfarlane**  
property.com

## Barra Close

Highworth, Wiltshire

An updated and greatly improved Three Bedroom detached home in the sought after Market Town of Highworth. This modernised family home offers deceptive...

- Living / Dining / Family Room
- Three Well Proportioned Bedrooms
- Mature South Facing Rear Gardens (Overlooking Countryside)
- Updated and Modernised Family Home
- Beautiful Home in Market Town of Highworth



# Barra Close

Highworth, Swindon

- Living / Dining / Family Room
- Three Well Proportioned Bedrooms
- Mature South Facing Rear Gardens (Overlooking Countryside)
- Updated and Modernised Family Home
- Beautiful Home in Market Town of Highworth

Council Tax band: TBD

EPC Energy Efficiency Rating: C

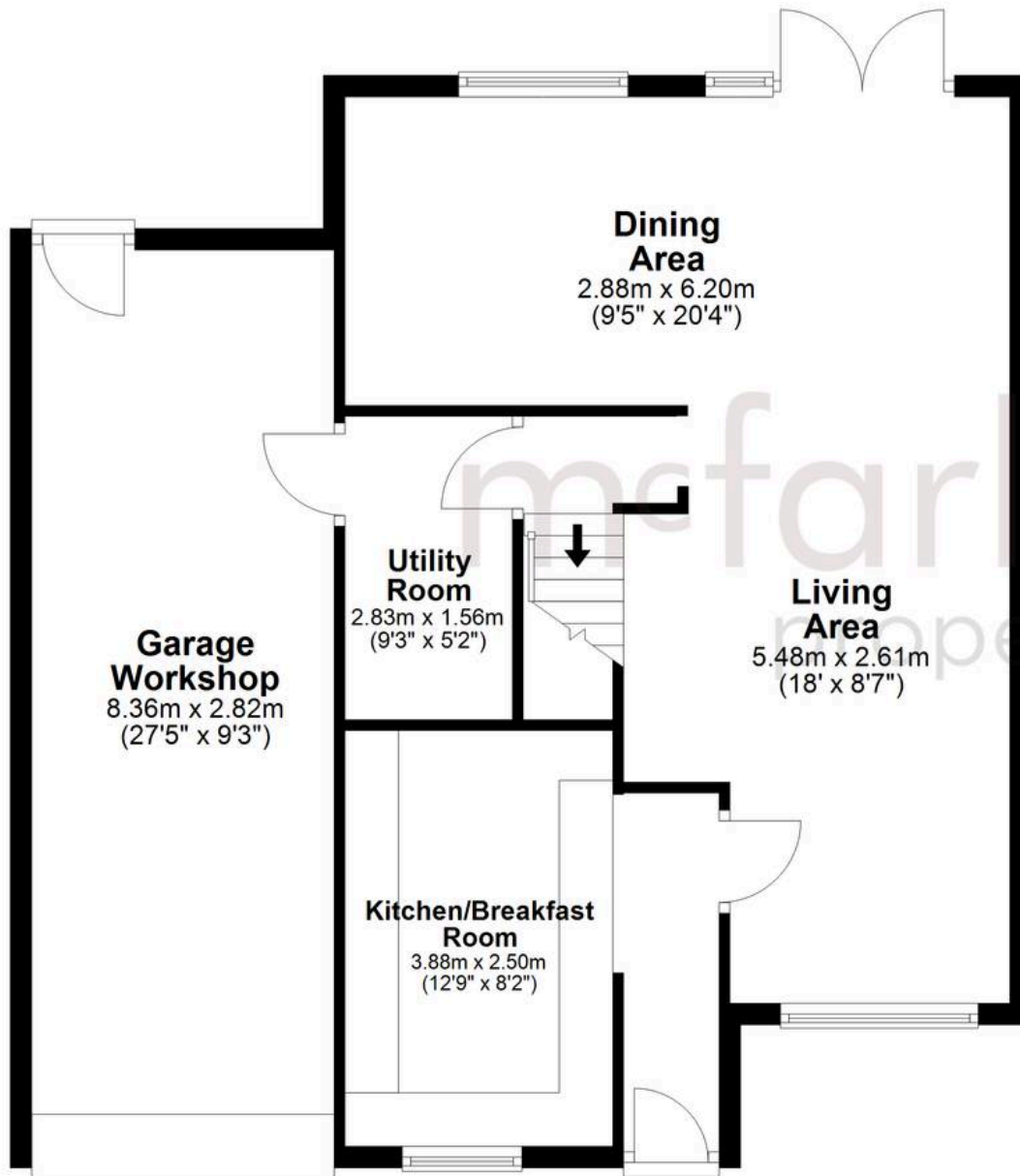
EPC Environmental Impact Rating: G



**mcfarlane**  
property.com

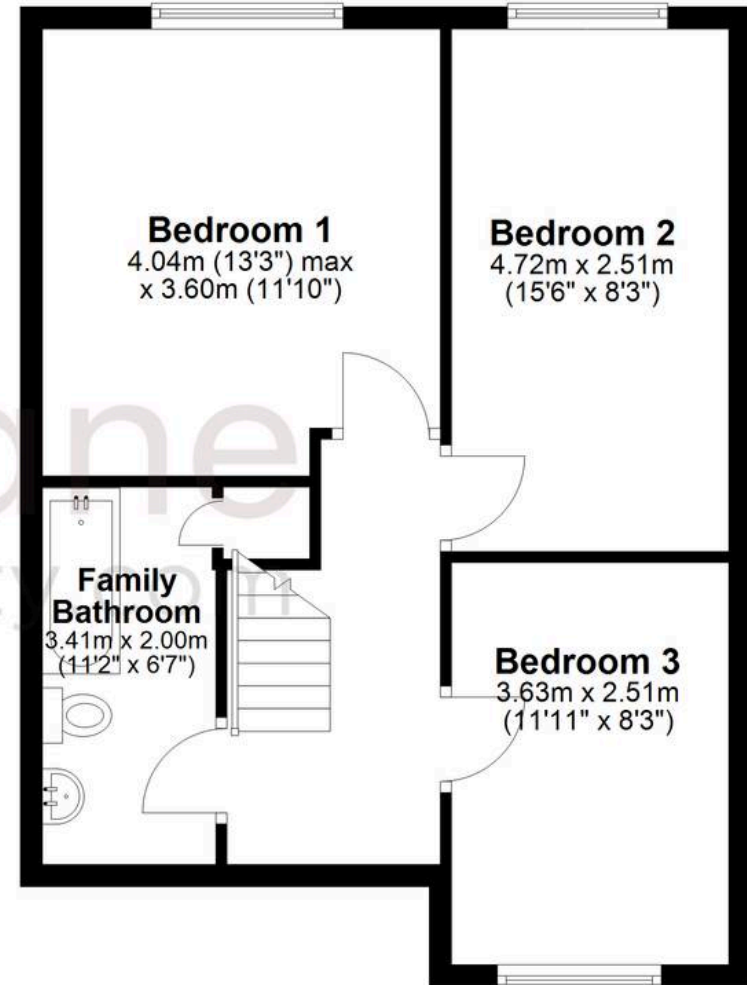
## Ground Floor

Approx. 81.7 sq. metres (878.9 sq. feet)



## First Floor

Approx. 49.1 sq. metres (528.6 sq. feet)



Total area: approx. 130.8 sq. metres (1407.5 sq. feet)

Agents Note: Whilst every care has been taken to prepare these sales particulars, they are for guidance purposes only. All measurements are approximate and for general guidance purposes only and whilst every care has been taken to ensure their accuracy, they should not be relied upon and potential buyers are advised to recheck the measurements.